

# SIDE SHOTS

Volume 37 Number 4

November Journal 2006



PROFESSIONAL LAND SURVEYORS OF COLORADO, INC.  
 AFFILIATE - NATIONAL SOCIETY OF PROFESSIONAL SURVEYORS  
 MEMBER - COLORADO ENGINEERING COUNCIL  
 MEMBER- WESTERN FEDERATION OF PROFESSIONAL SURVEYORS  
 OFFICERS (2005-2006)



**TOM T. ADAMS**  
 VICE PRESIDENT  
 1210 24TH LANE  
 PUEBLO, CO. 81006  
 O: (719) 546-5454  
 H: (719) 296-8262  
 F: (719) 546-5410

**JOHN B. GUYTON**  
 PRESIDENT  
 WFPS DELEGATE  
 FLATIRONS, INC.  
 3825 IRIS AVENUE, STE. 395  
 BOULDER, CO 80301  
 O: (303) 443-7001  
 F: (303) 443-9830

**ARTHUR W. HIPP**  
 SECRETARY-TREASURER  
 EXECUTIVE DIRECTOR  
 9660 WEST 56TH PLACE  
 H & O: (303) 424-8156  
 F: (303) 940-6061

**MARK F. CORBRIDGE**  
 PAST PRESIDENT  
 4901 OTERO DRIVE  
 LOVELAND, CO 80538  
 O: (970) 203-1552  
 F: (970) 203-1443

**DIRECTORS (2003-2006)**

**JOHN C. NOONAN (2005-2006)**  
 P.O. BOX 3696  
 STEAMBOAT SPRINGS, CO. 80477  
 H: (970) 879-4224  
 O: (970) 872-7700  
 F: (970) 871-8009

**A. RON PERKINS**  
 155 N. COLLEGE AVENUE, #100  
 FT. COLLINS, CO 80524  
 H: (970) 207-9097  
 O: (970) 407-9220  
 F: (970) 407-9244

**GEOFFREY F. STEPHENSON**  
 522 S. YOUNGFIELD COURT  
 LAKEWOOD, CO. 80228  
 H: (303) 988-2207  
 O: (303) 988-2207  
 F: (303) 988-3110

**DARRYL A. WILSON**  
 25532 MOSIER CIRCLE  
 ASPEN PARK, CO 80433  
 H: (720) 205-7325  
 DIRECTORS (2005-2008)

**DIANA E. ASKEW**  
 12322 S. WAMBLEE VALLEY RD.  
 CONIFER, CO. 80433  
 H: (303) 838-7577  
 O: 303.326.-7170  
 F: 303.343.-0052

**LAWRENCE T. CONNOLLY**  
 29210 HIGHWAY 160, UNIT D  
 DURANGO, CO 81303  
 H: (970) 759-4477  
 O: (970) 385-6891  
 F: (970) 385-6295

**GARY D. GABLE**  
 6538 VIVIAN STREET  
 ARVADA, CO. 80004  
 H: (303) 422-0199  
 O: (303) 843-3468  
 F: (303) 843-3468

**MICHAEL M. GREER**  
 7174 UNION ST.  
 ARVADA, CO 80004  
 H: (303) 279-5452  
 O: (303) 271-8787  
 F: (303) 271-8706

**WFPS DELEGATE (2005-2006)**

**DAVID C. DIFULVIO**  
 FARNSWORTH GROUP  
 2696 S. COLO. BLVD., S-250  
 DENVER, CO 80222  
 O: (303) 692-8483  
 F: (303) 692-0470

**NSPS GOVERNOR (2005-2006)**

**WARREN D. WARD**  
 P.O. BOX 653  
 FRASER, CO 80442  
 H: (970) 887-0462  
 O: (970) 725-3347  
 F: (970) 887-0463

Dear Fellow Members,

The Fall Technical Sessions are in the final planning stages and will take place November 30th through December 2, 2006. Ed Bristow and I will be presenting "Curative Statutes and Doctrines to correct Title Irregularities", other courses planned include presentations on ALTA surveys and Least Squares principles, Height Modernization, Management Training, Law of Easements, Boundary Dispute Resolution, and The Pincushion Effect. There should be a detailed announcement in this issue on course information and speakers.

The Membership Committee is working on ways to increase involvement of the general membership, and to increase membership in general. Some of the changes proposed include sending out renewal forms via regular mail and/or email instead of a notice in Side Shots; and offering free one year memberships to new PLS's and LSI's.

At the last Board of Directors meeting, the Board selected Diana Askew as Assistant Secretary/Treasurer, and Lisa Isom as Assistant Executive Director. Thank you both for accepting the positions. One item that Lisa and Di will be taking care of will be building a complete, accurate electronic database of member's information (address, phone, etc), which will help us in sending information out to all members. To assist with that, please fill out renewal forms completely each year.

The PLSC, Inc. bylaws are being reviewed. The Executive Committee will be reviewing the language in our bylaws to see if we need any changes to make them more relevant to the present, and/or to remove dated items and language. The committee will also be reviewing proposed changes submitted by Dexter Brinker.

Apparently, some people are checking items out of the PLSC Library and not returning them. Please remember that these items are for every member of the PLSC to access, and should be returned within a reasonable time frame.

At our Board Meeting, there was interest and discussion regarding a proposed NAFTA agreement as it affects our professional practice. Subsequent to our meeting, the NSPS Board of Directors issued a letter outlining the results of the NSPS meeting on this proposed agreement. A copy of that letter is included in this issue.

The PLSC will begin running an ad in the Colorado Real Estate Journal, the ad will run 12 times in the next year. The object of the ad is to increase awareness of the PLSC and Land Surveyors in general. I was recently interviewed for an article that is to be published in the Business or Real Estate sections of the Denver Post. The main point of the article is that people should consult a surveyor at the beginning of a project, rather than find one to fix a project that has gone bad.

Kudos to Mike Greer and many PLSC volunteers for organizing and staffing an excellent GIS in the Rockies Conference – it was a tremendous success. Thank you to everyone who participated.

The Annual Membership meeting is scheduled for Thursday, November 30th in conjunction with the Fall Technical Sessions, and will be followed by and Awards Banquet at 6:00 pm, free to members. I hope to see you all there.

Sincerely,  
 John B. Guyton, PLS



DEDICATED TO THE IMPROVEMENT OF LAND SURVEYING EDUCATION AND PRACTICE.

PROFESSIONAL LAND SURVEYORS  
OF COLORADO, INC.

AFFILIATE—NATIONAL SOCIETY OF  
PROFESSIONAL SURVEYORS  
MEMBER—COLORADO ENGINEERING COUNCIL  
MEMBER—WESTERN FEDERATION OF  
PROFESSIONAL SURVEYORS

OFFICERS (2006)

JOHN B. GUYTON  
*PRESIDENT*

Flatirons, Inc.  
3825 Iris Avenue, Ste 395  
Boulder, CO 80301  
O: (303) 443-7001  
F: (303) 443-9830

TOM T. ADAMS  
*VICE-PRESIDENT*

1210 24th Lane  
Pueblo, CO 81006  
O: (719) 546-5454  
f: (719) 546-5414

ARTHUR W. HIPPI  
*EXECUTIVE DIRECTOR*

Secretary-Treasurer  
9660 West 56th Place • Arvada, CO 80002  
(303) 424-8156 FAX: (303) 940-6061

2006 PLSC CHAPTER  
ORGANIZATION

CENTRAL COLORADO PROFESSIONAL SURVEYORS

*President* Gary Leak O: 720/946-0969  
*Vice President* Gene Kooper O: 303/989-5424  
*Secretary* John Lautenschlager O: 303/841-7436  
*Treasurer* Diana Askew O: 303/592-2837

*Directors:* Dick Barton, Randy Bloom, Bill Buntrock, Gary Gable,  
Mark Hall, James Rihaneck, Georgia Satterlee

NORTHERN CHAPTER - PLSC, INC.

*President* Steve Varriano O: 970/613-1447  
*President Elect* A. Ron Perkins O: 970/206-0301  
*Sec'y-Treas.* Rob Hintz O: 970/217-5412

*Directors:* Benny Salgada, Chad Washburn,  
Laine Landau, Lonnie Sheldon,

NORTHWEST 1/4 COLORADO  
LAND SURVEYORS

*President* Ridgway C. Moon O: 970/879-1987  
*Vice President* Gordon R. Dowling O: 970/276-3613  
*Sec'y-Treas.* John Noonan O: 970/879-4224

*Directors:* James Joy, Tom Effinger, Dave Ginther, Peter Epp  
*Immediate Past President:* Lloyd Powers

SOUTHERN COLORADO PROFESSIONAL  
LAND SURVEYORS

*President* Terry Maw O: 719/593-2593  
*Vice President* Mark Johannes O: 719/633-8533  
*Secretary* Mike Bouchard O: 719/590-9194  
*Treasurer* Daniel Hanten O: 719/542-6672

*Directors:* Nathan Lira, Cory Sharp, Joseph Alessik,  
Shawn Richards, Tom Adams

SOUTHWESTERN CHAPTER - PLSC, INC.

*President* Parker S. Newby O: 970/247-1705  
*Vice President* Tom E. Au O: 970/3850563  
*Secretary* David O. Freienmuth O: 970/385-6891  
*Treasurer* Lawrence T. Connolly O: 970/385-6891

WESTERN COLORADO LAND SURVEYORS

*President* Les Doehling O: 970/248-7072  
*Vice President* Wayne Lizer O: 970/241-1129  
*Sec'y-Treas.* Jeff Fletcher O: 970/254-8649

*Directors:* Patrick Green, Kurt Shepherd, Dennis Shellhorn,  
Jon Kobylarz, Steve Hagedorn, Teresa Smithson, Udell Williams

# SIDE SHOTS

NOVEMBER JOURNAL 2006

Volume 37

Number 4

Letter From The President.....	2
The Editor Sez .....	4
2006 PLSC Fall Technical Program and Annual Meeting .....	5
Chapter News .....	6
PLSC Insurance Program.....	13
Letter from NSPS President .....	14
Application for Membership or Renewal.....	15
McComber Mentoring Program .....	20
PLSC Board of Directors Meeting .....	21
Hazards of Old.....	26
BLM Letter .....	27
2006 Sustaining Members .....	31

*Side Shots is the official publication of the Professional Land Surveyors of Colorado, Inc.  
and is published quarterly for the betterment of the surveying profession.*

**John B. Guyton**  
*President*

**Tom T. Adams**  
*Vice President*

*For Editorial Correspondence, write:*

**ARTHUR W. HIPPI**

*Executive Director and Editor*

9660 West 56th Place  
Arvada, CO 80002  
303/424-8156

*This publication is not copyrighted and articles may be reprinted with due credit.  
Statements made and opinions expressed are from the contributors and do not necessarily  
express the official views of the Professional Land Surveyors of Colorado, Inc.  
Deadlines for editorials, articles, pictures and advertising are January 1, April 1,  
July 1 and October 1. All material received after the current deadline will appear  
in the next issue of Side Shots.*

*We would like to invite anyone who is interested to advertise in our newsletter - Side Shots.  
Do you have something you want to sell, trade or buy? Why not use Side Shots for your  
next ad. We can also reproduce business cards for advertising. All material must be  
sent to Arthur W. Hipp, 9660 W. 56th Place, Arvada, CO 80002, before the editorial deadline  
(January 1, April 1, July 1 and October 1).*

**Current Advertising Rates:**

*Business card size or less - Member \$15.00; Non-member \$20.00*

*One-Half Page - Member \$75.00; Non-member \$100.00*

*Full Page - Member \$150.00; Non-member \$200.00*



# Invest In Your Future

*By investing in our partnership*



Metropolitan  
State College  
of Denver



The Professional Land Surveyors of Colorado, Inc. (PLSC) recently entered into a Partnership Agreement with Metropolitan State College of Denver.

The agreement will benefit everyone in the real estate and surveying communities who depend on quality surveying work to help their businesses thrive.

As part of the agreement, funding will be provided to Metro on behalf of the school's Surveying and Mapping Program. The funding will help the program to achieve the highest academic standards and ensure quality surveying work in Colorado for years to come.

Please send your donation to:  
Colorado Surveyors  
Education Foundation, Inc.  
c/o Art Hipp  
9660 West 56th Place  
Arvada, CO 80002

*Education is the Future!*



## THE EDITOR SEZ

Greetings fellow surveyors and friends:

Well, here we are nearing the end of another season. I hope it has been enjoyable one and profitable for you. As far as I know there has been a lot of demand for suveyor's services and I trust you have had your share.



Art Hipp

PLSC, Inc. has been doing its best to enhance the value of your profession and increase opportunities for you. Your association exists solely to improve our opportunities to serve the public and bolster our contributions to society.

As members we also have an obligation to help each other, improve the quality of our profession and strengthen our communities. We have an individual duty to support our association and its activites. It is important that we take part in the goals of PLSC and do the things necessary to show that support. We should keep our membership current (by paying our dues on time) and also notify the leadership when we have a change of address or phone numbers. These things are very important to the stability of our society and ultimately our porfession. Promise yourself that in the coming year you will do these things and seek opportunities to assist in the growth of our Society.

Let me know when you have any changes in your status, promptly. I will surely appreciate it and serve you as best I can.

**2006 PLSC Fall Technical Program and  
Annual Meeting  
at the Colorado School of Mines Green Center  
Preliminary Schedule, Speakers, and Topics**

**Thursday, November 30, 2006**

Jack Kesler	Examination of the ALTA/ACSM Accuracy Standards (2005)
-------------	--

Jack will explore the minimum standards for ALTA surveys and evaluation by applying least squares analysis.

**Or**

Ed Bristow and J.B. Guyton	Curative Statutes and Doctrines to correct Title Irregularities
----------------------------	---

This course will examine the use of Boundary Line Agreements and other legal concepts including the Cooley Doctrine as they affect quieting title.

**PLSC Annual Meeting from 3:00 PM to 6:00 PM at the Green Center  
Awards Dinner beginning at 6:00 PM at the Table Mountain Inn**

**Friday, December 1, 2006**

Jeffery Lucas	The Pincushion Effect
---------------	-----------------------

A comprehensive look at the problem of multiple monuments and the effect they have on the general public as well as the surveying community.

**Or**

Various speakers from the NGS	Height Modernization Workshop
-------------------------------	-------------------------------

A panel of experts will discuss the proposed height modernization study with the integration of GPS technology with existing conventional survey techniques.

**Saturday, December 2, 2006**

Jeffery Lucas	Boundary Dispute Resolution (AM) and Law of Easements (PM)
---------------	--

Boundary Dispute Resolution: A study of the role of the surveyor to form an opinion as to where they believe the boundary lines would be located if adjudicated in court.

Law of Easements: real property rights and non-possessory interests created by easements will be examined.

**Or**

Joe Broberg	Management Training
-------------	---------------------

A training session to cover numerous management topics.

**Mark your calendars!**

Please contact Michael Greer 303-271-8787, [mgreer@jeffco.us](mailto:mgreer@jeffco.us); Tom Adams, [tom@PLSC.net](mailto:tom@PLSC.net); or Diana Askew, [diana.askew@evcohs.com](mailto:diana.askew@evcohs.com) for further information



## CCPS

Greetings from the Central Chapter. I would like to extend my thanks to those of you who volunteered to run for the officers and directors positions. The list of this year's nominees is as follows: Gene Kooper, President; Bill Buntrock, Vice President; Kurt Ernstberger, treasurer; Robert Snodgrass, Annie Oden, Anthony Syers, Randy Zanon and John Doty for the open Directors positions.

We are glad to be able to increase the Central chapter scholarship amount. We received two applications and will be awarding \$750 scholarships to Julian Cisneros and Luke Johnson for the next semester. Both of them are students in the surveying program at Metro.

Thanks to Gene Kooper for his work in getting our copy of the Hayden Atlas scanned. The Atlas is now on four DVD's. His efforts will

allow us to make the historical document available for the use and enjoyment of many people who might not otherwise have the opportunity to see it.

Randy Bloom will be starting this year's PLS refresher course on January 11 at the Colorado School of Mines. If there is a change in venue the new location will be announced.

Please feel free to join us for dinner at our general meeting at the Table Mountain Inn in Golden on October 26 and we look forward to see you all at the Central Chapter conference February 23 and 24.

Gary Leak, PLS  
President, CCPS

## SCPLS

The Paul Grout Golf Tournament was held on August 12 at Holldot Golf Course. More than 80 golfers braved the early morning start to enjoy a fine day of golfing,

camaraderie and competition. The weather was outstanding. After the round an awards ceremony and food was enjoyed. Many thanks to those who participated, sponsored holes and donated prizes. The tourney would not have been great without your help. Many thanks to Randy Reeves for organizing the event.

The fall workshop was held September 8 and 9 at the Pikes Peak Community College North Campus. The courses presented were Basic GPS/field fixes, ALTA surveys from the title officer and lenders attorney's side, Survey Math, Public Land System and the Integrated National Land System. We had between approximately 50 participants. Thank you to those who took classes. We received many positive comments about the programs presented. Thanks to Shawn

*Continued page 8*

"I'm always looking for ways to **save time**  
and **Berntsen continues to deliver.**"



**Fast and easy. That's ours too.** At Berntsen, we know that you expect the very best when ordering survey markers and supplies. That's why, in addition to our personalized customer service, we've added an easy-to-navigate website with live online support plus we make daily checks on the status of your order. Easy ordering, immediate response and quick delivery are your everyday expectations. Ours too. To experience our commitment to you and the value of your time, visit us online at: **www.berntsen.com** or give us a call at **877.686.8561**.

**Berntsen™**  
Helping You Make Your Mark on the World.  
**www.berntsen.com | 877.686.8561**

---

*A Company Working for Land Surveyors!!!!*

**SALES      LEASING      RENTAL**

*Trimble GPS, Total Stations, Digital Levels, RTK Radio Modems, Tripods,  
and many other surveying accessories!!!!*



**Call us today and see how we can help you!!!**

**VECTORS, INC.**  
**8811 E. Hampden Ave., Ste. 110**  
**Denver, CO 80231**

**Phone: 303-283-0343**  
**Fax: 303-283-0342**

## **CHAPTER NEWS continued**

Richards, Mark Johannes, Mike Bouchard and especially Patti Bouchard (playfully named our chapter mom) for their hard work in putting together the program.

The Southern Chapter's Christmas dinner date has been moved to December 8 this year. For those of you who could not attend because of a conflict, here is your chance. It will again be held at the La Renaissance. Notices will be sent out soon. See you there.

Terry R. Maw, PLS  
President, SCPLS

## **NC/PLSC**

The Northern Chapter of Professional Land Surveyors of Colorado is again into regularly scheduled meetings after taking the summer months off. We generally meet on the first Wednesday of each month at various meeting places. If there are any prospective members interested in attending a NCPLSC meeting, please contact me at 970-686-5011 and I will get the pertinent information forwarded.

As in the past, our September meeting was an informal affair with a light meal and light attendance. After the meal, Ron Perkins ran through the issues of this summer's PLSC legislative committee and the subsequent recommendations as were submitted to the PLSC Board of Directors. There were several of the issues that garnered quite a bit of attention and discussion, with the modifications to 38-51-106(1) C.R.S. probably leading the way. The proposed modification to 38-44-112 C.R.S. also created some lively discussion with differing opinions.

The TRIGSTAR competition was again held in several Northern Colorado schools and prizes were awarded by the NCPLSC. Thanks go out to Lonnie Sheldon and Benny Salgado for their efforts and commitment in this venture. The NCPLSC will continue to fund these prizes and help to generate some interest in the program in the upcoming year. The NCPLSC Spring Seminar is being planned for this

month. Hopefully, we will be able to settle on topics and speakers at the next monthly meeting and proceed at a pace with the planning and coordination that will make the seminar another successful event. Last spring, mentoring sessions were held in Loveland through the efforts of Gaby Veunzert, Steve Varriano and Lonnie Sheldon. These sessions were an initial success, with attendance dropping off as the summer workloads started taking over. The sessions will be started up again in November and it is our hope to see the large numbers that were attending at the start of the program.

At the October meeting, new Chapter President Steve Varriano and new Secretary/Treasurer Rob Hintz were installed into their respective offices. These two able gentlemen will take over the responsibilities of running the Chapter affairs and will gladly accept any inquiries from prospective mem-

*Continued page 10*

# **Complete Photogrammetric Services MAP WORKS**

**Contact: Ralph Vomaske, Certified Photogrammetist, ASPRS**

**7625 W. 5th Ave. #203E • Lakewood, CO 80226**

**Phone: 303-445-1856**

**Fax: 1-877-606-7982**

**E-mail: [mapworks@mho.net](mailto:mapworks@mho.net)**



**\$1,000,000 a year for life  
or a brand new Trimble S6?**



They both may be tempting, but only one provides you with the benefits of Trimble® technology. When surveyors asked for better performance, improved accuracy and extreme versatility, we listened. We packed the Trimble S6 Total Station system with features that provide unsurpassed efficiency, productivity, and profitability. This 100% cable-free total station and rover is an entirely upgradeable surveying solution built with your needs in mind.

#### **GPS SEARCH**

Trimble's GPS Search feature employs GPS at the robotic rover for an all-new style of Integrated Surveying™. It takes *less than three seconds* to turn to the robotic rover and lock onto your prism.

#### **MAGDRIVE™**

Whisper-quiet, direct-drive electromagnetic servos deliver unmatched speed and accuracy.

#### **MULTITRACK™**

Passive prism tracking combined with active Target ID provides exceptional flexibility and performance.

#### **SEAMLESS UPGRADES**

From Servo to Autolock to Robotic, the available upgrades make the Trimble S6 an investment that will grow with your business.

See what the new Trimble S6 is all about.  
Visit [www.trimble.com/revolution](http://www.trimble.com/revolution)



©2006, Trimble Navigation Limited. All rights reserved. Trimble and the Globe & Triangle logo are trademarks of Trimble Navigation Limited registered in the United States Patent and Trademark Office. SUR-094

**FOR MORE  
INFORMATION  
CALL YOUR  
TRIMBLE DEALER**

**AGA Geodimeter**  
Denver, CO  
303-431-1652

**Frontier Precision**  
Denver, CO  
800-652-1522

**Vectors Inc**  
Denver, CO  
303-283-0343

## CHAPTER NEWS continued

bers. Steve Varriano can be reached via email at [stevev@co.tait.com](mailto:stevev@co.tait.com) or by phone at 970-613-1447. Rob can be reached on his cell phone at 970-217-5412.

Steve Lund  
Past President, NC-PLSC

## WCLS

Dear WCLS and PLSC members:

Our September meeting was held on the 13th with again a pretty good turn out. Mr. Richard Bullen gave a brief presentation on GIS, GIS applications and software. We discussed the possibilities of creating a scholarship program. It was decided that various members would contact educators and groups to see what WCLS could do to promote the surveying profession. As election time is approaching we began taking nominations for the upcoming election. A committee was formed to facilitate the

elections. We also discussed the NAFTA document created by NSPS.

The mentoring classes began Sept. 11. Please contact Theresa Smithson for class information.

Our next meeting is scheduled for Nov. 8 at the Grand Junction City Hall, located at 250 N. 5th St. Thanks again to Peter and Mike for preparing the fantastic meals!

Sincerely,  
Les Doehling

## SWC/PLSC

The Southwest Chapter will be holding a meeting on October 17 to discuss the final administrative wrap-up from the 2006 seminar. Other topics of discussion will include coordination of the Southwest Chapter with area agencies to work on installation of a CORS location. This may involve collaboration with the Northern New Mexico Chapter of Professional Land Surveyors. They are working with San Juan College in Farmington,

New Mexico to use the college facilities as a location for a base station. This base station would benefit many four corners area surveyors and possibly provide a local RTK opportunity.

The Engineering Department at Fort Lewis College is looking for a donation of a total station for their survey curriculum. If any individuals or organizations would like to help FLC out, please contact Don May in the engineering department at 970-247-7545.

There will be an annual holiday social and dinner sponsored by the Southwest Chapter during the month of November. This is a great opportunity for area surveyors to relax and catch-up after a busy summer and fall season. The date and time will be determined at the October meeting. See ya there!

Respectfully Submitted,  
Parker S. Newby  
President, SWCPLSC



## TRIMBLE BATTERIES

TRIMBLE 4800 Lithium-Ion Battery Rebuild  
**ONLY \$249.99**

# BatteriesPlus.

**AURORA**  
994 S. Abilene St.  
**303.745.3333**

**LITTLETON**  
8601 W. Cross Dr. Pad #2A  
**303.973.4000**

**CENTENNIAL**  
8202 S. University Blvd.  
**303.771.7112**

**WESTMINSTER**  
10339 N. Federal Blvd. #400  
**303.438.0009**

**DENVER**  
2600 S. Colorado Blvd.  
**303.504.0101**

[www.batteriesplus.com](http://www.batteriesplus.com)

## REDUCED PRICING!

### TRIMBLE 5700/5800 Replacement Lithium-Ion Battery

- » 2000mAh capacity vs. 1850 OEM
- » Replaces Trimble 52030, 46607, 38403, 29518, Moli1821, Sokkia BDC46
- » **GUARANTEED TO FIT!**
- » NOW ONLY **\$49.99**

### TRIMBLE 4800 Rebuilt Lithium-Ion Battery

- » 4000mAh cell capacity vs. 3000mAh OEM
- » Replaces Trimble 31030
- » ONLY **\$249.99**

### Cellular & Two-Way Radio Batteries

- » Extremely competitive prices
- » Batteries for all Nextel phones



## Now Available

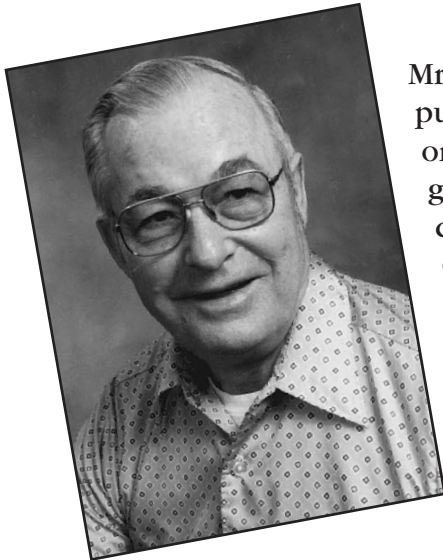
A masterful documentation and historical perspective of each initial surveying point for federal public lands in the United States. Published in 9x12 format, *Initial Points of the Rectangular Survey System* features a 4-color section with more than 130 photos depicting monuments and landmarks.

C. Albert White's second book,

# INITIAL POINTS OF THE RECTANGULAR SURVEY SYSTEM

Never before, in the history of surveying, has so much pertinent and interesting material been so meticulously compiled in one publication. (White personally visited EVERY Initial Point.)

## C. Albert White



Mr. White's first book, *A History of the Rectangular Survey System*, published by the BLM in 1983, is considered the definitive work on the U.S. Public Land Survey System. Arguably the most distinguished authority on the history of nineteenth and twentieth century public lands surveying, White began his career with the General Land Office in 1946. Both as BLM and a private surveyor, he applied his zeal to a wide range of activities. White's expertise represents a bridge between the wisdom and experience of the American heritage of land settlement and the contemporary uses of surveying technology.

Published by the Colorado Professional Land Surveyors Educational Foundation, Inc., a non-profit foundation, *Initial Points of the Rectangular Survey System* is undertaken in the spirit of, and dedication to, Mr. White's remarkable contributions to his field. Net proceeds from its sale will be returned to the educational foundation.

Name \_\_\_\_\_

Address \_\_\_\_\_  
\_\_\_\_\_

Number of copies	Price
1	\$89
2-5	\$79
6-10	\$69

Send check to:  
Initial Points  
c/o The Publishing House,  
P.O. Box 215, Westminster, CO 80036-0215.  
Tel. 303-428-9529; Fax 303-430-1676

Enclosed is \$ \_\_\_\_\_ for \_\_\_\_\_ copies plus \$7 for shipping and  
handling for a total of \$ \_\_\_\_\_.



# NOTHING BEATS EXPERIENCE.

AGA is the most experienced sales and service organization in Colorado. So we'll get your crews up and running fast. And the faster they get efficient, the faster you will realize your return on investment.



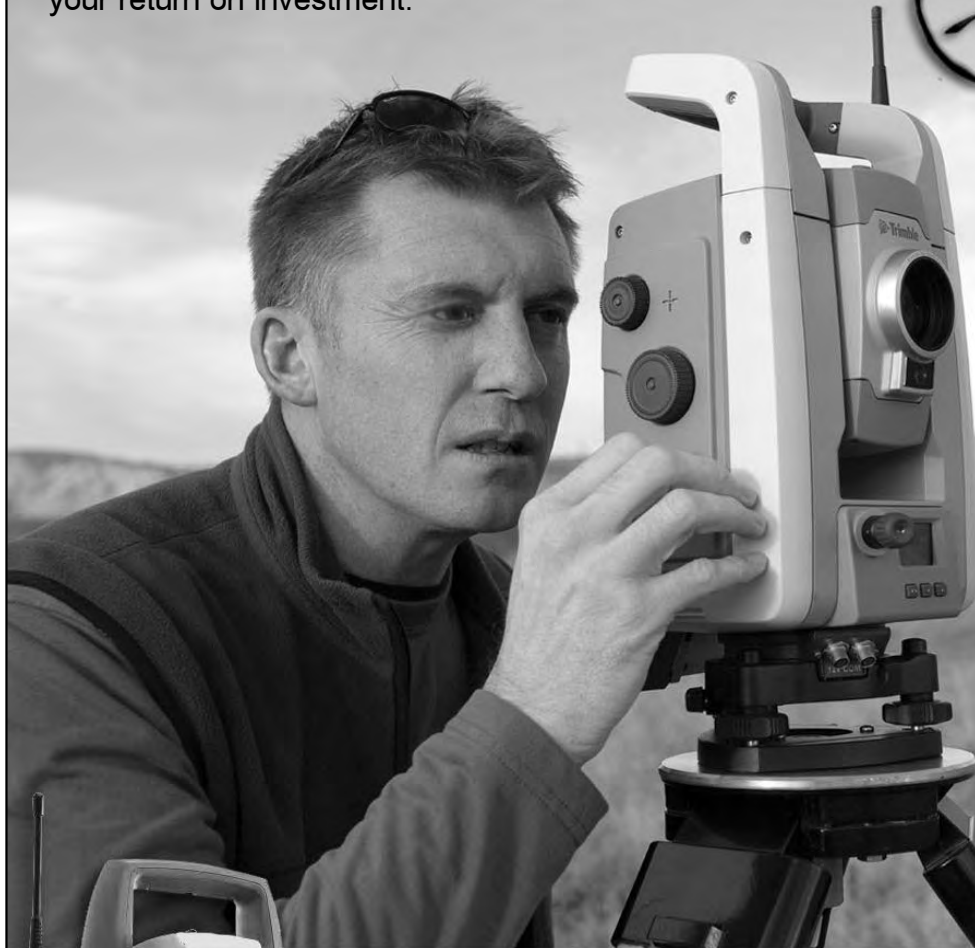
**AGA**

Advanced Geodetic Applications

14700 W. 66th Place, #10  
Arvada, CO 80004

**303-271-0077**

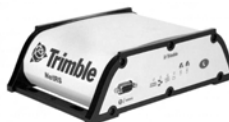
[www.agageo.com](http://www.agageo.com)



*With the most experienced service department in the region and in-house support, we have the resources to fulfill our commitment to total customer satisfaction. To further support our customers we offer accessories, training and both short and long-term rentals of the most current systems.*

**We sell and support the complete line of Trimble surveying solutions**

- GPS field surveying systems
- GPS infrastructure solutions
- Robotic and servo-driven total stations
- Digital levels
- TDS data collectors
- Trimble Controllers and solutions



# PROFESSIONAL LAND SURVEYORS OF COLORADO INSURANCE PROGRAM

Administered by: Lisa Isom

## The Business Concern: Long Term Care Insurance as a Benefit

As I discussed in the last issue of Sideshots, we now have available LTC (Long Term Care) for you as additional Benefit of the program.

At home and in the workforce, long-term care is emerging as one of the critical issues of our time, and employers have a key role to play through education. Dealing with long-term care needs can be an emotionally and financially significant life event. Almost a quarter of U.S. households – 22 million – are already involved in caring for a relative or friend who is 50 or older, according to the non-profit National Alliance for Caregiving (“A federal case for LTC.” Employee Benefit News. 01/01/03). These individuals, if currently working, may have little time available for specialized care giving, and the additional responsibility.

Hidden impacts of care giving responsibilities could have an impact in the workplace also, due to emergencies and phone calls, absenteeism, adjusted schedules, increased need for time off, decreased willingness to relocate and travel, and increased stress, which often may lead to employee health-related problems and fatigue.

Long-term care insurance is one of the newest employee benefits being made available to employees by businesses to attract and retain top performers, and is a valuable addition to any benefits portfolio. Benefits can be offered selectively. Employers may also determine different premium contribution levels for different groups of employees, either employee pay all, on a cost-shared basis and/or employer pay all. By extending coverage to family members, employers can make it easier for workers to manage care giving responsibilities and remain productive on the job.

Tax-qualified long-term care insurance occupies a special place in the tax code. When an employer pays for coverage for employees, either for a selected group or for all, the employer might be able to deduct the premium payments. This is a plan that can be customized to fit an employer’s specific criteria, and it might offer a tax deduction for the employer without creating additional taxable income for the employee. You should consult a tax professional for more information related to their particular situation.

For more information on the potential benefits of long-term care insurance for your company and your employees, please contact Lisa Isom at 888-454-9562.

As always, we are providing an insurance program to all PLSC members and we can custom build a plan right for you.

**Assurance Risk Managers, Inc.**  
**2851 S. Parker Road, Suite 760**  
**Aurora, CO 80014**

**Phone: 888-454-9562**  
**Fax : 303-454-9564**





## NATIONAL SOCIETY OF PROFESSIONAL SURVEYORS

a member organization of

American Congress on Surveying and Mapping

6 MONTGOMERY VILLAGE AVENUE SUITE #403 GAITHERSBURG, MD 20879 PHONE 240-632-9716 FAX 240-632-1321

Curtis W. Sumner, Executive Director E-MAIL [curt.sumner@acsm.net](mailto:curt.sumner@acsm.net)

Patricia A. Canfield, Executive Administrator E-MAIL [patcanfield@acsm.net](mailto:patcanfield@acsm.net) WEB [nspsmo.org](http://nspsmo.org)

### 2006 OFFICERS

#### President

JOSEPH M. DOLAN, PLS  
732 North Harrisburg Avenue  
Atlantic City, NJ 08401  
609-344-2648 (o)  
[jmdolan@mindspring.com](mailto:jmdolan@mindspring.com)

#### President-Elect

RITA M. LUMOS, PLS  
2413 Carlwright Road  
VC Highlands, NV 89521-7114  
775-847-7267 (h)  
[RITAML@IX.NETCOM.COM](mailto:RITAML@IX.NETCOM.COM)

#### Vice President

PARTICK J. BEEHLER, PLS  
904 Cardigan Street, N.W.  
Olympia, WA 98502  
360-786-0090 (o)  
[pbeehler@whpacific.com](mailto:pbeehler@whpacific.com)

#### Secretary/Treasurer

JOHN L. ABENROTH, PLS  
906 Metcalf Street  
Sedro-Woolley, WA 98284  
360-855-2121 (o)  
[jla@isomedia.com](mailto:jla@isomedia.com)

#### Past President

JERRY M. GOODSON, RPLS  
P. O. Box 349  
Lampasas, TX 76550  
512-556-6885 (o)  
[survey@jltex.net](mailto:survey@jltex.net)

#### Chm. Board of Governors

A. WAYNE HARRISON, RPLS  
21 Superior Road  
Worcester, MA 01604-2121  
508-832-6225 (o)  
[awharrison@earthlink.net](mailto:awharrison@earthlink.net)

#### Directors

##### Area 1

ROBERT DAHN, LLS  
387 N. Main Street  
Manchester, CT 06040  
860-643-2520 (o)  
[bdahn@meehangoodin.com](mailto:bdahn@meehangoodin.com)

##### Area 2

LEWIS H. CONLEY, JR., PLS & PP  
211 North Main Street, Suite 203  
Cape May Court House, NJ 08210  
609-465-2600 (o)  
[lconley@vannoteharvey.com](mailto:lconley@vannoteharvey.com)

##### Area 3

WILLIAM R. COLEMAN, PLS  
212 Gibraltar Point Road  
Dallies, NC 28034  
704-391-5088 (o)  
[wcoleman@oci.charlotte.nc.us](mailto:wcoleman@oci.charlotte.nc.us)

##### Area 4

W. LAMAR EVERS, PSM  
2907 Shamrock South  
Tallahassee, FL 32308  
850-878-4191 (o)  
[lamare@browardavis.com](mailto:lamare@browardavis.com)

##### Area 5

MARLOW R. MCGOWAN, PLS  
P. O. Box 1159  
Pine Island, MN 55963  
507-356-4092 (h)  
[m.mcgowan1@juno.com](mailto:m.mcgowan1@juno.com)

##### Area 6

RICHARD J. BARR, PLS, PE  
11920 Westline Industrial Dr.  
St. Louis, MO 63146  
314-692-6888 (o)  
[rbarr@nuvox.net](mailto:rbarr@nuvox.net)

##### Area 7

JEFFREY B. JONES, PLS  
1102 West 19<sup>th</sup> Street  
Cheyenne, WY 82001  
307-630-2652 (o)  
[jfb@steilsurvey.com](mailto:jfb@steilsurvey.com)

##### Area 8

LYNN R. SAVORY, RPLS  
752 County Road 222  
Hamilton, TX 76531  
254-681-3185 (o)  
[lsavory@htcomp.net](mailto:lsavory@htcomp.net)

##### Area 9

BRETT K. JEFFERSON, PLS  
Tri State Surveying, Ltd.  
1925 East Prater Way  
Sparks, NV 89434-8938  
775-358-9491 (o)  
[bjefferson@tristateld.com](mailto:bjefferson@tristateld.com)

##### Area 10

JOHN P. WARREN, PLS  
Snohomish County Surveyor  
3000 Rockefeller Avenue, M/S 607  
Everett, WA 98201-4045  
425-388-6651 (o)

October 9, 2006

To All: Affiliate Presidents  
Executive Directors  
Newsletter Editors

Re: North American Free Trade Agreement (NAFTA)

Greetings All!

At the NSPS Fall meeting, the Board of Governors and the NSPS Board of Directors passed two important motions concerning NAFTA.

By a vote of 36 to 7 with 1 abstention the Governors withdrew support for Version 8-2 of the proposed agreement.

A motion before the Board of Governors to cease all effort on NAFTA was defeated 38 to 8 with 3 abstaining. This action by the Board of Governors indicates that they want NSPS to have continued discussion with Canada and Mexico to obtain an agreement.

At the Board of Directors meeting, the directors voted unanimously to no longer consider version 8-2. It is clear that any two-tiered licensing system is not acceptable to surveyors in our country.

The Board also voted unanimously to pursue an agreement on NAFTA based on the following principle:

"It is agreed that Licensure of Surveying and Mapping Professionals will be based on the hosts jurisdiction's requirements. Citizenship and residency requirements in the host jurisdiction are not considered for licensure if the licensing requirements were adopted after 1994. The language of commerce of the host jurisdiction will be used."

I have charged the Private Practice committee of NSPS to develop appropriate language for a new NAFTA Agreement to offer Canada and Mexico within thirty days.

We believe it is in the best interest of the surveying profession, for NSPS, to continue to fulfill it's designation as the entity that negotiates any agreement for surveyors in the United States.

I will keep you advised of our progress.

Sincerely,

Joseph M. Dolan, PLS  
NSPS President

cc: Directors, Governors



# PROFESSIONAL LAND SURVEYORS OF COLORADO, INC.

AFFILIATE — AMERICAN CONGRESS ON SURVEYING AND MAPPING  
MEMBER — COLORADO ENGINEERING COUNCIL  
MEMBER — WESTERN FEDERATION OF PROFESSIONAL SURVEYORS



## APPLICATION FOR MEMBERSHIP OR RENEWAL

Name \_\_\_\_\_  
LAST FIRST M.I.

Home Address \_\_\_\_\_

Employer \_\_\_\_\_  
CITY STATE ZIP CODE TELEPHONE

Business Address \_\_\_\_\_

E-mail Address \_\_\_\_\_ Fax Number \_\_\_\_\_  
CITY STATE ZIP CODE TELEPHONE

Class of Membership Desired: Voting \_\_\_\_\_ Associate \_\_\_\_\_ Retired \_\_\_\_\_  
\* Student \_\_\_\_\_ Sustaining \_\_\_\_\_

\* Specify School \_\_\_\_\_  
(See reverse side of this form for definition of membership categories)

Colorado Registration Number \_\_\_\_\_

☐ PLS ☐ PE-PLS ☐ PE ☐ LSIT

List the committees on which you would be willing to serve:  
(See reverse side of this form for a list of standing committees)

I hereby make application for membership in the Professional Land Surveyors of Colorado, Inc. and agree to abide by the Constitution and By-Lays of the organization:

Date \_\_\_\_\_ Signature \_\_\_\_\_

Amount submitted with this application (there is no initiation fee): \$

☐ Check ☐ Credit Card

If paying by credit card:

Credit Card Name \_\_\_\_\_

Name on Card \_\_\_\_\_

Signature \_\_\_\_\_

Card Expiration Date \_\_\_\_\_

Amount Paid by Credit Card \_\_\_\_\_

### Return this Application to:

Arthur W. Hipp, PLS  
Exec. Dir. PLSC, Inc.  
9660 West 56th Place  
Arvada, CO 80002

### Your choice of PLSC Chapter Affiliation:

(Chapter Membership is "at large" and is not required but encouraged)

Central (CCPS)	<input type="checkbox"/> \$20
Northern (NC/PLSC)	<input type="checkbox"/> \$20
Northwestern (NW1/4CLS)	<input type="checkbox"/> \$20
Southern (SCPLS)	<input type="checkbox"/> \$20
Southwestern (SWC/PLSC)	<input type="checkbox"/> \$20
Western (WCLS)	<input type="checkbox"/> \$20

Please check your Chapter choice(s) and enclose the appropriate amount.

Are you a member of A.C.S. M.? ☐ Yes ☐ No  
May we send you an A.C.S. M. membership application?

☐ Yes ☐ No

# PROFESSIONAL LAND SURVEYORS OF COLORADO, INC.

## Purpose

The purpose of this organization shall be to improve the profession of Land Surveying in Colorado. (Article II Constitution)

## Membership

**Voting Member** — Any person who is a registered land surveyor in the State of Colorado, and whose registration is in full effect, shall upon payment of \$75 annual dues, be a voting member of P.L.S.C., Inc. and as such shall have full voting and office holding privileges. (Article 1A1 By-Laws)

**Associate Member** — Any person who is interested in land surveying shall, upon payment of \$55 annual dues, be an associate member of P.L.S.C., Inc., but shall have no voting or office holding privileges. (Article 1A2 By-Laws)

**Student Member** — Any undergraduate student who is interested in land surveying shall, upon payment of \$15 annual dues, be a student member of P.L.S.C., Inc., but shall have no voting or office holding privileges. (Article 1A3 By-Laws) Individuals holding a Colorado PLS or PE-PLS registration are not eligible for this class of membership.

**Retired Professional Land Surveyor** — A Colorado licensed Professional Land Surveyor who no longer practices land surveying (including field work, office work and consulting). He/she however may continue to maintain his/her license in effect and shall not be precluded from acting as an expert witness or court appointed commissioner. This is a non-voting classification. The annual dues shall be \$30.00.

**Sustaining Member** — Any person or firm engaged in a business related to land surveying or interested in the land surveying profession shall, upon contribution of \$200 annually, be a sustaining member of P.L.S.C., Inc., but shall have no voting or office holding privileges. (Article 1A4 By-Laws)

**Dues**—Dues shall be due and payable as of January 1st for the coming year and shall be delinquent if not paid by April 1st following. Membership rights cease when dues become delinquent. (Article 1B By-Laws)

## Standing Committees

Following is a list of the standing committees of this organization: Indicate your interest by checking one or more.

- |  |   |
|--|---|
| <input type="checkbox"/> Legislation               | <input type="checkbox"/> Nominations and Elections              |
| <input type="checkbox"/> Liaison                   | <input type="checkbox"/> Program                                |
| <input type="checkbox"/> Membership                | <input type="checkbox"/> Publications                           |
| <input type="checkbox"/> Ethics and Fair Practices | <input type="checkbox"/> Survey Monuments and Records Standards |

## Meetings

Regular meetings or other sanctioned activities shall normally be on the 3rd Saturday of February, May, August, and November at a place designated by the Executive Board. The February meeting shall be the annual meeting of the organization. (Article VI A & B By-Laws)

# **FRONTIER** **PRECISION** INC

TECHNOLOGY FOR  
INFORMATION AND MEASUREMENT

Serving Colorado Surveyors since 1991!



**The #1 Trimble  
Dealer  
in the Americas!**



- GPS
- Total Stations
- Robotics
- VRS
- Supplies
- Stakes & Lath
- Service
- Training
- Support
- Rentals



**Here to serve you  
in 2005 and years  
to come!**

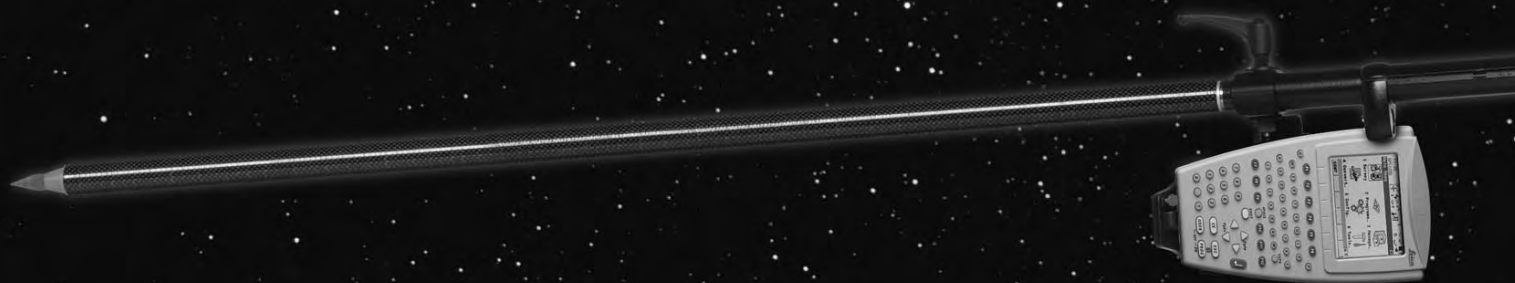
**FRONTIER**  
**PRECISION** INC

TECHNOLOGY FOR  
INFORMATION AND MEASUREMENT

321 East 57th Ave  
Denver, CO 80216  
800-652-1522 or 720-214-3500



# Leica SmartRover Travel Light



SmartStation



TPS1200



GPS1200



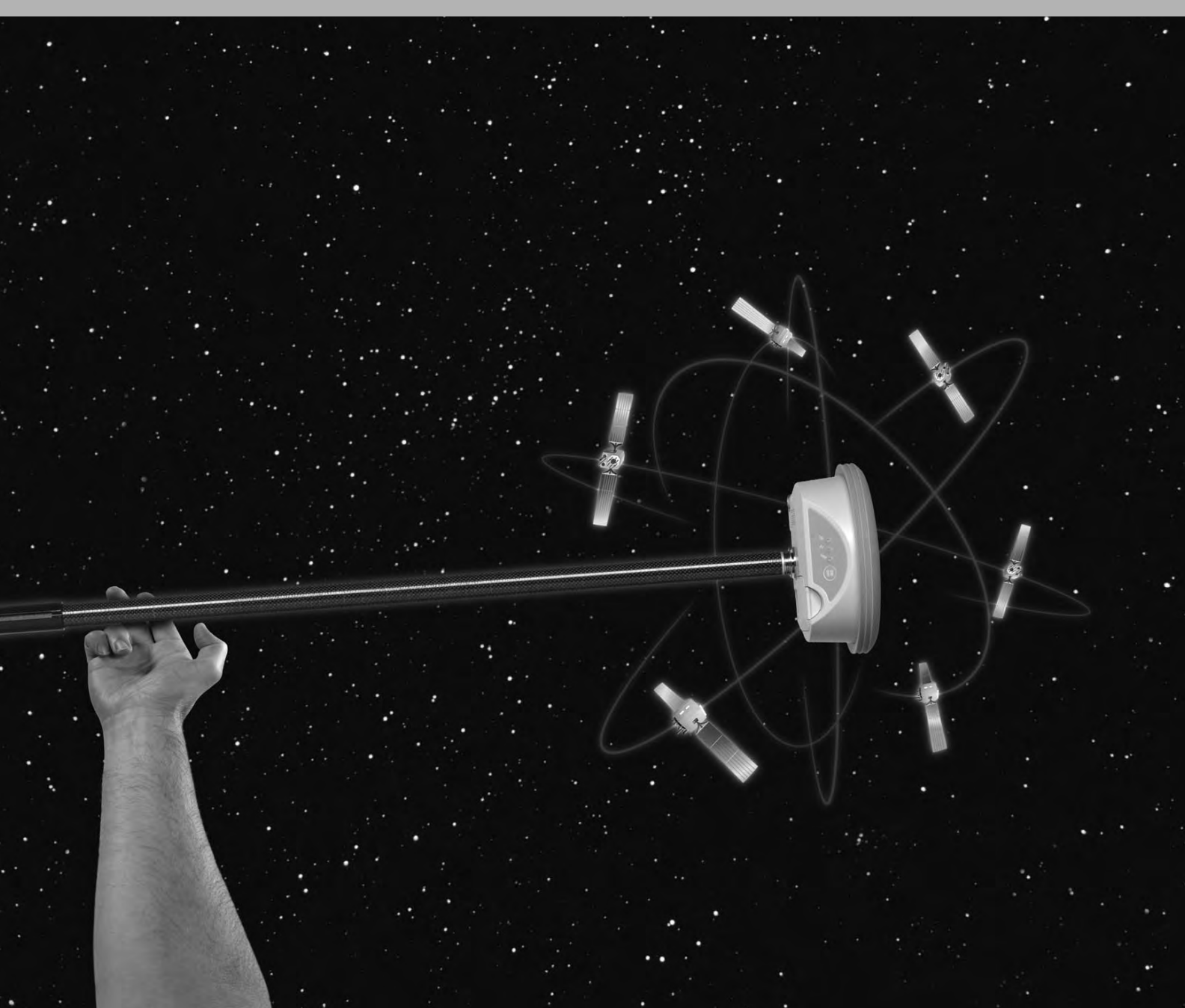
Commonality



Reference Station



Leica Geo Office



## Introducing the Leica SmartRover: The world's lightest cable-free RTK GPS System.

Now the world's best-performing GPS system is also the world's lightest. Less weight reduces operator fatigue – and boosts productivity. Best of all, we've dropped weight without reducing performance. You still get the powerful SmartTrack measurement engine that out-performs every GPS system on the market. Count on heavyweight performance from this amazingly lightweight system. Only from Leica Geosystems.

### Leica SmartRover

- SmartTrack and SmartCheck for best GPS results
- All-on-the-pole convenience
- WinCE and Bluetooth/MIL spec ruggedness
- Fully compatible with Leica TPS1200 and SmartStation
- To schedule a demo, contact your local Leica Geosystems dealer or call 1-800-367-9453.

**Hixon Mfg. & Supply Co.**  
Fort Collins 800-762-5252  
Denver 303-694-0012

- when it has to be right

**Leica**  
Geosystems

## METROPOLITAN STATE COLLEGE *of* DENVER

*Metro Education Ventures—Extended Campus*

### DISTANCE DELIVERY OF COURSES FOR

## LAND SURVEYORS

Now it is possible to pursue or advance a career in land surveying via distance delivery.

- Select courses individually or as part of the degree completion program.
- Enroll year-around; take six months to complete a course.
- Take exams close to home or work.
- Communicate with your instructor by e-mail or telephone.

## Twelve Self-Paced DVD Lecture Courses

SUR 1510-4	Surveying I
SUR 2520-4	Surveying II
SUR 2530-4	Route Surveying
SUR 2550-3	Surveying Computations
SUR 3100-3	Survey Data Adjustment/Analysis I
SUR 3150-2	Astronomy for Surveyors
SUR 3220-2	Real Property Descriptions
SUR 3300-3	Photogrammetry
SUR 3540-3	Boundary Law I
SUR 3700-3	Geodesy I
SUR 4510-3	Map Projections and Coordinate Systems
SUR 4540-3	Boundary Law II

All courses (except SUR 4540) taught by:  
Herbert W. Stoughton, PhD, PE, PLS, CP  
Head of Metro's Surveying and Mapping Program

## On-line Course

COM 390F-3 Technical Writing for Engineering Technology

## Noncredit LSI Review Course

Are you preparing for the PSI or PLS exam?  
Help is available! Forty (40) hours of videotaped preparation for LSI and PLS exams.

For more information and registration visit our web site:  
**[www.mscd.edu/~surdd](http://www.mscd.edu/~surdd)** or send an email to [mscd\\_surdd@mscd.edu](mailto:mscd_surdd@mscd.edu)  
or call Extended Campus at **303-721-1313**.

# McComber Mentoring Program

For this Fall the Bill McComber Mentoring is taking a somewhat unexpected turn; the Western Slope is taking the lead! In addition to Theresa Smithson's formally scheduled class in Montrose, there is now a class running in Grand Junction, with the potential of future growth; for details contact Tom W. Sylvester, O: 970-255-7386, Fax: 970-243-8515.

In the Denver area the next 3 topics are: "Error Propagation" (Oct. 18), "Introduction to Survey Adjustments" (Nov. 1) and JB Guyton on "Weighing Evidence and the Geometry of Title" (Nov. 15); for more information contact: Gene Kooper, H: 303-989-5424, [ekooper@uswest.net](mailto:ekooper@uswest.net).

Both the Southern Chapter (Tom Adams, office: 719-546-5454, toll Free: 877-546-6283, cell: 719-251-7980, [tom.adams@dot.state.co.us](mailto:tom.adams@dot.state.co.us)) and the Northern Chapter (Steve Varriano, office: 970-613-1447, [stevev@co.tait.com](mailto:stevev@co.tait.com)) are dormant, but there is hope for the future.

Help - There are enough subjects on hand to run the program for many more sessions, but the input from future and existing participants is needed to make the topics as user friendly as possible. Any suggestions of interest to an individual or a group of technicians is welcome. Either contact one of the individuals above, or Gaby M. Neunzert at: 303-279-1700, [gneunzert@mines.edu](mailto:gneunzert@mines.edu).



# PLSC BOARD OF DIRECTORS MEETING

Friday, September 8th  
Pikes Peak Community College, Rampart Campus  
Hosted by the Southern Chapter  
Dinner 6:00 PM  
Meeting 6:30 PM to 10:00 PM

## AGENDA

Call to Order

Recognition of Members

Present/Absent (Directors/officers marked by \* )

*Tom Adams\*; Mark Johannes; Georgia Satterlee; Randy Zanon; Shawn Richards; Dexter M. Brinker; Terry Maw; Warren Ward; Gary Gable\*; Arthur W. Hipp\*; Lisa Isom; John B. Guyton\*; Larry Connolly\*; Brian Dennis; Ron Perkins\*; Russ Clark; Paul Suter; Geof Stephenson\*; Michael Greer\*; Micheal Bouchard; Diana Askew\**

Welcome of Guests: introductions  
Additions, Deletions and Modifications to Agenda

Approval of Minutes from previous meeting

*Minutes not available*

Comments from Hosting Chapter – Terry Maw or representative

*Terry Maw reported that around 50 people attended today, with around 75 to 80 total.*

**REPORTS** (if bracketed, no request to present a report was received)

**Secretary Treasurer** – Art Hipp  
Report to the Board of Directors

*Education foundation balance 78000 +; PLSC 27,000 +; Security; Scholarship fund 23000 +; Patterson Memorial fund 42000 +; Main concern is that we have 93 members that have not paid their dues, Art made 300 phone calls to delinquent members, some responded and some did not, if you have not paid then*

*get them in or you will not be included in the 2006 membership roster*

*Side shots information is due again*

*Address changes to Art*

Intent to seek re-election.

*Art running for the office again, bylaws read as to duties of the positions. Suggestion made to segregate and disperse some of Art's responsibility to Lisa and Di*

To separate Secretary from Treasurer would require Amending Bylaws. Simpler to create "Assistant Secretary Treasurer" position to allow Art to reduce duties per his request.

*Lisa mentioned that the address and email address updates are not being written on the card, please clearly write all of the information on the card or mailed in dues Lisa will write an article for side shots with the dues information – Tom wants to list all of the officers and director's of every chapter in the roster – JB wants Di to help art with the email duties – JB discussed with Art – transparency of duties is necessary*

Appoint "Assistant Secretary/Treasurer", confirmation by Board of Directors, and define duties  
Duties of Secretary/Treasurer include keeping minutes of all PLSC meetings; giving notice of all meetings; keeping the corporate seal; keeping accounts of monies and all assets/liabilities; disbursing funds; preparing report of transac-

tions; serving on Nominations and Elections committee; serving on the Executive Committee; and any other duties assigned by the Board of Directors.

Determine which would become duties of "assistant".

*Art said in that letter to JB he enumerated the functions that he would continue to do as the Editor and treasurer for the next two years; Side Shots*

*Financial records*

(President – John B. Guyton)  
(Vice President – Tom Adams)

**Executive Director**

Report on Miami Meeting from Lisa Isom

*The April 22, 2006 ACSM/NSPS board meeting was from 7 am to 5 pm. Lisa Isom sat on the board for the nation representing the PLSC executive director and discussed the duties of the positions in each state, seminars, type, continuing ed, ideas to make changes on conventions, what they do in their conventions, lawsuits from conventions etc. in the professional organizations. The speaker/chairperson of the board brought in a conference planner. They discussed NSPS and the sliding scale for NSPS members who are members of state organizations. They will meet yearly and quarterly teleconferences.*

Board to formally select Executive Director

Bylaws list Exec Dir and Sec/Treas as separate positions so should be

**Continued page 22**

## **DIRECTORS MTG continued**

separate persons, particularly in light of Art wanting to reduce his duties.

Discuss appointment of Executive Director and "Assistant Executive Director"

Create paid position of "Assistant to Exec. Dir." and determine pay amount. Exec Dir to locate/retain said person.

*Lisa is the assistant executive director to take the duties that Art cannot do; these duties will be defined out of the meeting – it is a paid position and Lisa needs to start sending invoices!!*

Duties of Exec Dir. include conducting day-to-day business of the corporation; acting as business manager; acting as office manager for leased/owned properties; managing any PLSC, Inc. employees; serving on the Executive Committee; and any other duties assigned by the officers and directors.

### **NSPS Delegate-Warren Ward**

1. Report on NSPS
2. Report on NAFTA MRD Version 8-2

*Mutual recognition document 8.2 went to NCEES the document is not to change any licensing law in North America mutual reorganization of services and definitions standards for Canada and Mexico*

*Motion in favor of the document – not forwarded – stalled due to a letter over a year ago, the national NCEES are withholding endorsement of the agreement – Warren thinks it does not matter what NCEES says, people are not being licensed, and are mostly PE's, how to globalize our profession for our mutual benefit – to recognize a PLS from another country as a professional (reciprocity) most of the state delegates voted in favor – board of directors stalled again – the letter written – page 2 of report – vote on one of 3 choices...*

*JB feels it is in our benefit Gary asks if professional societies in Canada and Mexico are*

*on board with this – Canada is proprietary – one speaker was in favor of this from Canada – CAD work is being outsourced – Warren has done a lot of research on immigration – copy of the agreement needed for an email vote this coming week – Lisa will scan and email the document so we know what we are voting for – (Di scan the list of attendees and send it to Lisa so she can send the NAFTA agreement to everyone who attended the PLSC meeting – vote within the next week*

*Note: Vote from PLSC is moot – measure voted down by NSPS*

**WFPS Delegates** – Dave DiFulvio / John B. Guyton

Report to West Fed on PLSC activities – hard copy handout

### **STANDING COMMITTEES**

#### **Nominations and Elections &**

Awards – Larry Connolly, Chair

*Those who have accepted nominations are:*

*JB, President; Tom Adams, VP; Russ Clark, Dir; Doug Berling, Dir; Terry Maw, Dir; Art Hipp, Sec/Treas; Mike Bouchard, Dir; we also need a summary of experience from each candidate, Larry will follow up.*

*Larry requests money for mailing expenses – invoice to Art (per JB)*

**Legislative** – Ron Perkins, Chair

*Modification to the definition of an LSP from Doyle; any survey where you set any type of monument can be called an LSP.*

*38-44-112 boundary line agreements do not require a monument to be set – require the setting of some type of monument? – to be discussed via email*

*38-51-106 subsection of units to be described on the LSP – field measurements be shown on the survey (clarify not to just show the record)*

*Requiring certifications for cadastral – to the board for consideration*

*Maurice and Dex have been working on the legislative committee and are bringing their*

*ideas to the board (Robert's Rules) items that were shown on Ron's report were voted down by a margin and by proxy (to be discussed later) Dex had not see his report and Ron wrote it 4 hours ago*

Reports submitted:

August 31 Meeting Report

Views of the Minority Report

August 23 Meeting Report

**Break 8:35 – 8:45**

**Publications** – Geoff Stephenson, Chair

Review standing items in Side Shots:

*Thanks for the articles Gene and Di, there seem to be lots of material being submitted! (Art)*

Status of PLSC Library

*Dex stamped his books and we appreciate his donation.*

*Lisa said people are coming in there to check items out, some items are not coming back – should we take the books down to the metro library? – Bonna Kay is against it.*

*Need a museum, library, archive, and documents on the Internet, we'll keep working on it*

**Liaison** – Gary Gable, Chair

*Setting up a non-profit organization / meeting to raise donations and get another professor on board / propose a statute change to allow a senior to take LSI exam within 30 hours of graduation / ABET accreditation team review – meeting it's goals*

(Survey Monumentation and Standards – JB Guyton, Chair)

**Membership** – Tom Adams, Chair

*A goal is to send out free memberships to everyone who obtained PLS of SIT – we need to get more membership – send out a first class (been voted on) renewal system rather than just place it in Side Shots – start to increase membership and keep the members who already have – need to get those who have not renewed back in We need a good attributed database for the membership as we are 1/3 of the PLS's in the state (Di to work toward this goal)*

**Continued page 24**

ALLEN PRECISION EQUIPMENT

800.241.6223



**TOPCON**

**WORLD'S  
FIRST**

GPS, Glonass,  
Galileo capable  
GNSS receiver

**TOPCON GR-3**



**PARADIGM-G3  
CHIP  
TECHNOLOGY**



*Announcing  
the next  
generation  
of Satellite  
Positioning!*

**TOPCON**

Call  
for the  
**Best  
Quote**  
Today

**GPT-9000A and GTS-900A  
Robotic Total Stations**

**New!**

**Smaller, lighter,  
faster and  
longer range.  
A new modern  
design and the  
most advanced  
technology  
available in the  
market today.**

- Innovative, completely cable-free system design
- Superior X-TRAC™ Quick-Lock tracking technology
- Advanced, longest range (2000M) reflectorless EDM technology
- Integrated, free of interference, 2.4 GHz SpSp robotic data communications
- Full-color, graphical Windows Mobile instrument and field controller interface
- Field Scan Imaging-ready



Leslie Taylor • Sales Consultant

**Repair and Service on your Precision Instruments**

• Quick Turn Around Time Available • Factory Certified Technicians

**[www.allenprecision.com](http://www.allenprecision.com)**



Lisa is getting copies of the renewals after Art enters them into the database. We need to answer questions about where the money is and how much there is in each account. Di and Lisa will go to Art's house to get the databases. Art said he had them all on his computer.

(Ethics and Fair Practices - Larry Connolly, Chair)

**Executive Committee** - JB Guyton, Chair

JB explained the executive committee duties – we don't have an executive committee at this time. JB wants to appoint two directors to the executive committee to help manage day to day operations – expenditures that exceed \$500.00 are the only decisions that are necessary – propose to increase this limit as it needs to be higher.

The executive committee is the consists of the officers and two directors, and is the vehicle to make important decisions that are urgent without a quorum – the old one just faded away – Terry suggested some backups – Mike and Di are the directors who were appointed. Tom to move that the two director's seats to the executive committee be appointed by the president and accepted by the board

#### **SPECIAL COMMITTEES**

(Trig Star / NCEES Multi Media – Warren Ward)

**Marketing – Paul Suter**

Discussion/vote on ad in Colorado Real Estate Journal – cost \$2100.00 (more under new business)

(Electronic Secretary – Lisa Isom)

#### **CHAPTERS**

(Northern - President – Steve Lund)

(Central - President - Gary Leak)

(Southern - President –Terry Maw)

Terry Maw passed on a report due to time constraints

(Northwest ? - President – Ridge-way Moon)

(Western - President – Les Doehling)

(Southwest - President – Parker Newby)

#### **NEW BUSINESS**

**GIS in the Rockies** – overview by Mike

PLSC and Survey tracts – large number of PLS's on the planning board - volunteers needed for the booths

#### **Fall Technical Session Report –**

Tom Adams / Mike Greer

Change in date for Technical session brought up because it conflicts with a chapter Christmas dinner; Mike overviewed the latest plans for the conference;

Need to get the awards pulled together

#### **Reimbursement for Travel**

**Expenses** to Board of Directors Meetings

(previous motion passed by email vote 5/6/05)

Mileage reimbursed at \$0.445 per mile based on 2006 federal guidelines (updated from 5/05 motion)

Airfare, lodging, meals and other travel expenses reimbursed at actual cost based on receipts submitted.

#### **PLSC, Inc. Bylaws**

Review and possibly revise Bylaws – they were written to be applicable at that time, and parts may be obsolete

Review of proposed Amendments submitted by Dex

See Bylaws Section X for additional requirements

Tom's motion is that the bylaws be reviewed by the executive committee in addition others, seconded by Gary Gable, revised, reread, re-seconded by Gary, revised again, seconded again, unanimous approval (see revised motion)

#### **Statute Book - Tom**

Any volunteers for updating? (?)

**Recurring Monthly Costs** - examine/review

Paul Suter

Colorado Real Estate Journal – big supporter of the industry Paul recommends this as a great marketing opportunity – JB

supports supporting the PLSC in the Journal – Art one time in one issue? 12 issues, 12 ads – they create the ad for us – what is this what is that in the ad? About twice a month, we can select the issues we want to be in. Russ says they are a very upstanding journal – it is a 1/8<sup>th</sup> page ad, not an article, spending \$2100 in 12 months. Motion made to carry ad, none oppose, one abstention, motion passed.

Article to be published in the business section, real estate page, Paul will have some influence, the point is to clarify that good surveyors are sought out, get a surveyor first in the planning process, survey by reputable surveyor, good surveyor, point out that surveyors are important, we are not all bad. Advocate for the PLSC.

POB is doing an article of the field trip and the restoration of monuments, with photos to be included. POB indicated that JB's article may be published on boundary line agreements

Metro Liaison committee – Paul will continue to attend the meetings

Any ideas that should be in POB get that information to Paul Suter.

Peg Ackerman

Art Hipp

Any other monthly costs not listed?

9. 9:55-10:00 NEXT MEETING

DATE, TIME, PLACE

10. ADJOURN

***For a Surveyor by a Surveyor***



# HIXON

## Mfg & Supply Co.

*Visit us at*

[www.hixonmfg.com](http://www.hixonmfg.com)

*GPS Training Listed!*

### **Service and Repair**

Our technicians are factory certified to perform all levels of service on Leica Geosystems equipment. Call Brock (Denver) or Gene (Ft. Collins) today.



### *Two Locations!*

1001 Smithfield Dr.

Fort Collins, CO

(970)482-0111

(800)762-5252

8745 E. Orchard Rd #520

Greenwood Village, CO

(303)694-0012

(800)475-3422



*Sales Service Rentals Training*

Leica-Garmin-SECO-Rolatape-Lufkin-Keson-Estwing-Crain-CST



# HAZARDS OF OLD

## A WORK OF FICTION

BY

EARL F. HENDERSON, PLS

Not long ago I had an occasion to peruse some old archival documents in my father's attic. While doing so I came across a letter written by my Great-Great-Grandfather during the Civil War to his wife-to-be, my Great-Great-Grandmother. I hadn't known until reading that letter that surveying was in the family history. It's very touching and I thought I'd like to reprint it here for people to appreciate the hazards of surveying during those times compared to the considerably less deadly hazards we face today.

*August 15, 1862  
My Dearest Savannah,*

It is my deepest hope that you are enjoying this hot, steamy, sultry summer in our native Charleston and that this war has not encumbered that beautiful countryside nor your father's plantation, the lovely Apple Blossom Manor. This damned war is going to be the death of us all. It seems ages since last I was able to take in the pleasure of your beauty. I must apologize for my horse. Whence I mounted him and he spun on his quarters thus putting you off like a cannonade, airborne into that mud puddle. I was most embarrassed. But being that our company was marching hence, I had no time to retrieve you from your sloppy perch lest I myself join you in such a condition and delay the company. Had I only known then that I would be spending so much of my time sloshing through such swamps and mud in pursuit of this war I would have gladly entered therein to retrieve you. Please forgive my horse, Scout, as he did not, I am earnestly

sure, have the intent for such a calamity. I had hoped to take the memory of our last kiss with me into battle and draw courage from its vision, but alas I can not rid myself of the sight of you as I rode away to war. I will always cherish that image.

I have been assigned to the First Infantry of Carolina surveying division and as such have had many the opportunity to traverse the countryside of our great, and very new nation. I pray that our endeavour to rid ourselves of the yankee tyrants will succeed. The dangers of the survey corp are not as great or as numerous as those of the infantry but they can be as deadly. We are not often engaged in battle but we must be wary of the possibility of running up on the enemy unbeknownstedly. Sargeant Jezachiah was unfortunate enough to enjoy such an encounter just two short months ago. He was lead chainman and upon breaking through a gamble of underbrush found hisself smack in the middle of a small enemy encampment. In his haste to defend hisself and expunge the glorious South of as many of them damn Yankees as he was able, he quite by accident shot hisself in the foot. I was on the other side of the underbrush and had not yet been made aware of the encounter until this shot and its subsequent reaction alerted me, thus allowing me the opportunity to beat a hasty retreat and escape the clutches of the enemy. Sargeant Jezachiah was not so fortunate as I, since he had thus been wounded and could not escape. He has since become a prisoner of war and I have made application with the Captain for him to receive a medal

for saving my life at the cost of his freedom.

I can blame my lack of battle experience on my father's insistence that I study the mathematics, of which I found an acute ease. Surveying is an acquired taste of skill and knowledge, but once a person achieves the grasp of it, is quite the enjoyable profession. I should like to make application with our county to continue this profession once this war is ended. I believe that I can thus provide a suitable livelihood for you and our children, the first of which I would like to name Jezachiah in honor of the man who gave his freedom that I might not be captured by the yankee vermin.

But don't be drawn in to a melancholy about your dear departed, for I take great pains each day to maintain a vigilance to ensure my safe return to your bosom. Vigilance is necessary as the dangers are many and varied. Last year we lost our able and promising chainman, Private Hannibal when he, totally inadvertently I assure you, stepped upon a loaded bear trap while completing a traverse run through a wood. His leg was at once severed just below the knee. I was grateful that we were not within earshot of any enemy encampments or vicarages. He has since, I am told, been fitted with a wooden leg and returned to his home in the Alabama territory with several medals attesting to his bravery.

I have thus been promoted quickly through the ranks on our survey crew. I was most recently promoted to Chief of Party when Lt. Nehemiah, while reconnoitering a field which had recently seen a terrible battle, happened upon an



unexploded cannonball and was kilt into many pieces. We were forced to bury what we could identify in a small grave. Pray for him, my beloved, that he will be reassembled in heaven.

Soon after this unlikely occurrence I had occasion to be bitten on the arm by a Copperhead snake. It put me in quite a state for several days and nights, but I have since recovered briskly. Don't you fret my darlin', as the swelling has subsided and I am regaining the use of that hand somewhat.

I must close now, my dearest, as we must prepare to depart on the morrow for our next assignment in the Indian territories. I am told by our guide, a trapper with only three fingers and a curious bald spot on the top of his head, that they are of the friendly sort and enjoy trading goods. It is thus that I hope to provision our company for our work and acquire laborers to unburden the men.

Low these many months of separation have been most difficult for me, but I remain true at great exertion. I can but only imagine the burden upon you, my Beloved. Be aware that my thoughts are always of you, to a distraction, and that I shall not tarry whence the time comes that I am released of this war and can return post haste to the warmth of your company and the promise of our union (and not that damned yankee kind of union neither). So until that time arrives, please make company with my mother at our own plantation of Tara every so often, that she may be made aware of my accomplishments through you. And know that I shall not rest in my vigilance lest I may ne'er again enjoy thy enchanting beauty.

*Your Beloved and Faithful,*

PLSC, Inc. is seeking people to help update the Statute Book originally prepared by Bob Stollard. The book needs to be updated to include post-sunset legislation items and any other additions and/or updates that have occurred since the book was prepared. If you are memorizing statutes for the exam, this would be a way to benefit from all that studying. If interested, please contact Tom Adams at [tom@plsc.net](mailto:tom@plsc.net)



IN REPLY REFER TO:

CO-956  
9655.2

## United States Department of the Interior

BUREAU OF LAND MANAGEMENT  
Colorado State Office  
2850 Youngfield Street  
Lakewood, Colorado 80215-7093



[www.co.blm.gov](http://www.co.blm.gov)

September 28, 2006

Mr. Arthur W. Hipp, Secretary-Treasurer  
Professional Land Surveyors of Colorado  
9660 West 56th Place  
Arvada, Colorado 80002

Dear Art:

This letter is to inform you of official cadastral surveys in Colorado that have been accepted from July 1, 2006 through September 30, 2006, and are now available from the Public Room, Bureau of Land Management, Colorado State Office, 2850 Youngfield Street, Lakewood, Colorado, 80215.

The accepted original surveys, resurveys, supplemental plats or remonumentations are listed below by township, range, meridian, group #, type, approval date and number of plats.

<u>Township</u>	<u>Range</u>	<u>Meridian</u>	<u>Group #</u>	<u>Type</u>	<u>Approved</u>	<u>Plats</u>
T. 1 N.	R. 72 W.	Sixth	Sec.13	Suppl. Plat	07/20/06	1
T. 49 N.	R. 10 E.	NMPM	Sec.18	Suppl. Plat	07/24/06	1
T. 33 N.	R. 13 W.	NMPM	1419	Plat & Notes	07/28/06	1
T. 34 N.	R. 13 W.	NMPM	1419	Plat & Notes	07/28/06	1
T. 1 N.	R. 71 W.	Sixth	Sec.22	Suppl. Plat	07/31/06	1
T. 15 S.	R. 76 W.	Sixth	1435	Plat & Notes	08/01/06	1
T. 5 S.	R. 74 W.	Sixth	1270	Plat & Notes	08/07/06	1
T. 9 S.	R. 74 W.	Sixth	1448	Plat & Notes	08/11/06	1
T. 10 N.	R.101 W.	Sixth	750	Plat & Notes	08/15/06	1
T. 32 N.	R. 16 W.	NMPM	1425	Plat & Notes	08/22/06	1
T. 27 S.	R. 72 W.	Sixth	1410	Plat & Notes	09/12/06	1
T. 32 N.	R. 1 E.	NMPM	1447	Plat & Notes	09/14/06	1
T.33.5 N.	R. 17 W.	NMPM	1452	Plat Only	09/20/06	1
T. 3 N.	R. 80 W.	Sixth	1443	Plat & Notes	09/27/06	1
T. 12 S.	R. 79 W.	Sixth	1416&750	Plat Only	09/27/06	2

As other surveys are completed, I will advise you of their acceptance. You may circulate this letter among the membership of the Professional Land Surveyors of Colorado.

Sincerely yours,

*Randall M. Zimmon*  
Chief Cadastral Surveyor for Colorado

# 2007 Colorado Refresher Course

The Central Colorado Professional Surveyors and Metropolitan State College of Denver Surveying and Mapping Program in cooperation with the Colorado School of Mines are offering a comprehensive Land Surveying Refresher Course for 2007. This course offers a review and self-study plan for those taking the NCEES Fundamentals of Surveying, Principals and Practice of Surveying and Colorado specific examinations. The course is specifically designed to aid candidates in ***developing and expanding exam-taking proficiencies.***

## REFRESHER COURSE SCHEDULE

<u>Session</u>	<u>Date</u>	<u>Topic</u>	<u>Instructors</u>
1	Wed Jan 10	Overview NCEES/COLO Fundamentals of Surveying I	Herb Stoughton/Alan Blair Gaby Neunzert
2	Wed Jan 17	Fundamentals of Surveying II	Gaby Neunzert
3	Wed Jan 24	Geodesy, GIS and State Plane	Gaby Neunzert
4	Wed Jan 31	Legal Terminology and Definitions	Diana Askew
5	Wed Feb 7	U.S. Public Land Surveys I	Randy Zanon
6	Wed Feb 14	U.S. Public Land Surveys II	Randy Bloom
7	Wed Feb 21	Colorado Law I	Doyle Abrahamson
8	Wed Feb 28	Colorado Law II	Roger Nelson
9	Wed Mar 7	Business, Ethics, Prin. & Practice	Geoffrey Stephenson/Alan Blair
10	Sat Mar 17	Mock Examinations	Randy Zanon/Randy Bloom

### Times

The Wednesday evening classes will be 3 hours in length, starting promptly at 6:00 P.M. The Saturday March 17 session will consist of a mock FS and PS/Colorado NCEES examination. The exam will start at 8:00 A.M., and end at Noon.

### Registration and Costs

The fee for the entire course is \$250, or \$40 per 3-hour block taken individually. Complete and mail the Registration Form to the address provided. Early registration is recommended so that adequate handout materials can be assured. Optional: Course content offered on compact disc with lecture notes, \$130.

### Materials

It is suggested you bring a NCEES approved calculator (see list below) that you are very familiar with, any surveying textbooks available to you, a Manual of Surveying Instructions, 1973 Black's

Law dictionary, a 3-ring binder for notes and hand-out materials and an inquiring mind. Homework and quizzes are to be expected. NCEES Approved Calculators: Hewlett Packard (HP) 33s, HP 9s, Casio - FX 115 MS and FX 115 MS Plus (Note: Models with "-SR" designation at end are also allowed.) Texas Instruments (TI) - TI 30X IIS, TI 30X IIB, TI 36X)

### Location and Further Information

The Colorado Refresher Course will be held in Room 204 of the George R. Brown Hall located on the campus of the Colorado School of Mines in Golden, Colorado. See <http://www.colorado-surveyors.org/> for registration information. For questions on registration contact Susan Call, Program Manager, MSCD Extended Campus at 303-741-6394. Deadline for Registration is December 18, 2006. Registration and payment must be received prior to attending a session. For other questions contact Randy Bloom at 303-239-3827.

***Registration form on page 30***

# Don't Settle for a 'One-Fits-All' GPS

A standard GPS solution can't meet everyone's needs. **That's why our SMI Flex GPS solutions allow you to customize your GPS system to the type of work you do.** From the GPS receiver to the data collector to the communications and accessories, you're able to choose the components that will best fit your specific type of work. We consult with you to help determine your needs and then design the solution that will work the best. Upgrade to the SMI Flex GPS solution and benefit from:

- Wireless capability
- 26-channel tracking
- Receiver configurable as base or rover
- Real-time subcentimeter accuracy most anytime, most anywhere
- Obtain RTK positions even during signal loss due to partial blockages
- Continuous RTK position accuracy during radio outages of 15 minutes or more
- Compatible with other GPS solutions

**SMi**  
FIELD SURVEY SOLUTIONS  
BY EAGLE POINT



**To schedule a demo or learn more, call 1-800-678-6565.**



4131 Westmark Drive • Dubuque, IA 52002

(800) 678-6565 • (563) 556-8392 • [www.eaglepoint.com](http://www.eaglepoint.com) • [www.smi.com](http://www.smi.com) • [info@eaglepoint.com](mailto:info@eaglepoint.com)



# Metropolitan State College of Denver – Surveying and Mapping Program

## Registration Form for Colorado Refresher Courses

Please register me for the course(s) checked below

☐ 10 Session Colorado Refresher Course \$250

or

### Individual Sessions

☐ Overview of NCEES, \$40

Fundamentals of Surveying I

☐ Fundamentals of Surveying II \$40

☐ Geodesy, GIS and State Plane Coordinates \$40

☐ Legal Terminology and Definitions \$40

☐ U.S. Public Land Surveys I \$40

☐ U.S. Public Land Surveys II \$40

☐ Colorado Law I \$40

☐ Colorado Law II \$40

☐ Business, Ethics, Principles and Practice \$40

☐ Mock Examination \$40

☐ 10 DVD disc set and lecture notes \$130

### Registration Information:

Name: \_\_\_\_\_

Mailing Address: \_\_\_\_\_

City \_\_\_\_\_ State \_\_\_\_\_ Zip Code \_\_\_\_\_

Business Phone: \_\_\_\_\_ Fax \_\_\_\_\_

Home Phone: \_\_\_\_\_

Email \_\_\_\_\_

### Payment:

Enclosed please find my payment for: \$ \_\_\_\_\_

☐ 10 Session Course (\$250) \$ \_\_\_\_\_

☐ Individual Course (s) x \$40 each \$ \_\_\_\_\_

☐ 10 DVD disc set and lecture notes (\$130) \$ \_\_\_\_\_

**Total** \$ \_\_\_\_\_

☐ Check enclosed for total charge. Make checks payable to Metro State

☐ Charge my credit card for total indicated:

\_\_\_ VISA \_\_\_ MasterCard \_\_\_ Discover

Card number \_\_\_\_\_

Expiration Date \_\_\_\_\_

Name as it appears on credit card

\_\_\_\_\_

### Return this registration form and payment to:

Metro State College-South Campus  
Attn: Survey Dept.  
5660 Greenwood Plaza Blvd. #100  
Greenwood Village, CO 80111



# 2006 SUSTAINING MEMBERS

**AERO-METRIC ENGINEERING, INC.**

4708 South College Avenue  
Fort Collins, CO 80525

**AEROTEK**

2000 S. Colorado Boulevard  
Building 2, Suite 150  
Denver, CO 80222

**AGA GEODOMETER**

Paul McDaniel  
53 Meadow Lake Drive  
Lyons, CO 80540

**ALLEN PRECISION EQUIPMENT, INC.**

1550 Boggs Road  
Duluth, GA 30096

**ASSURANCE RISK MANAGERS**

Lisa Isom  
2851 S. Parker Rd, Suite 760  
Aurora, CO 80014

**BANNERMAN SURVEYORS, INC.**

4997 Highway 90 East  
Mariana, FL 32446

**BERNTSEN INTERNATIONAL, INC.**

P.O. Box 8670  
Madison, WI 53708-8670  
www.berntsen.com

**CARY AND ASSOCIATES**

540 St. Andrews Drive  
Longmont, CO 80501-9500

**CONTRACT SURVEYORS, LTD.**

2133 S. Bellaire St., Suite 14  
Denver, CO 80222

**JOSEPH A. DONOFRIO**

JR Engineering  
4310 Arrows West Drive  
Colorado Springs, CO 80907

**EMK CONSULTANTS, INC.**

7006 S. Alton Way, Bldg. F  
Centennial, CO 80112

**FLATIRON, INC.**

3825 Iris Avenue, Suite 395  
Boulder, CO 80301

**FRONTIER PRECISION**

321 East 57th Ave., Unit A  
Denver, CO 80216

**Genzel Land Surveying, P.C.**

7033 Cole Road  
Colden, NY 14033-9720

**GORE RANGE SURVEYING, LLC**

953 S. Frontage Road West, S. 106  
Vail, CO 81657

**HIXON MANUFACTURING & SUPPLY CO.**

1001 Smithfield Drive  
Fort Collins, CO 80524

**LEICA GEOSYSTEMS, INC.**

8745 East Orchard Road, S-520  
Englewood, CO 80111

**MERRICK & COMPANY**

2450 South Peoria Street  
Aurora, CO 80014

**O'NEILLS POSITIONING SERVICES**

2513 Lexington Street  
Lafayette, CO 80026

**PETROLEUM FIELD SERVICES, LLC**

165 S. Union Blvd., #705  
Lakewood, CO 80228

**PLANET-GIS-LLC**

P.O. Box 1747  
Castle Rock, CO 80104

**ROCKY MOUNTAIN LASER/TPI**

5385 Quebec Street  
Commerce City, CO 80022

**STEPHEN G. RUTZEN**

JR Engineering  
4310 Arrows West Drive  
Colorado Springs, CO 80907

**SURV-KAP, INC.**

P.O. Box 27367  
Tucson, AZ 85726

**SURVEY & CONSTRUCTION SUPPLY CO.**

930 West Byers Place  
Denver, CO 80223

**SYSTEMS DIVIDENDS, LLC**

1238 Promgranate Lane  
Golden, CO 80401

**TERRY LAND SURVEYING, INC.**

P.O. Box 851  
Trinidad, CO 81082

**TRIMBLE NAVIGATION, LTD.**

547 Kellenburger Road  
Dayton, OH 45424-1099

**TRINITY (Div. of Bank of the West)**

475 Sansome Street, 19th Floor  
San Francisco, CA 94111

**UNDERGROUND CONSULTING SOLUTIONS**

2701 W. Oxford Ave., Suite 6  
Englewood, CO 80110

**VECTORS, INC.**

8811 E. Hampton Ave., #110  
Denver, CO 80231

**WESTWOOD COLLEGE OF TECHNOLOGY**

7350 North Broadway  
Denver, CO 80221

*These firms support our organization.  
Please show them your appreciation with  
your patronage.*



# EXPLORE NEW BOUNDARIES!

*Monuments, Caps and Accessories*  
800-445-5320 • [surv-kap.com](http://surv-kap.com)

© 2005 SURV KAP INC.

Editor  
Arthur W. Hipp  
9660 West 56th Place  
Arvada, CO 80002

PRST STD  
U.S. POSTAGE  
**PAID**  
WESTMINSTER,  
CO, 80036  
Permit No. 56