

November 2009

# SIDE SHOTS

Professional Land Surveyors of Colorado

Volume 40, Issue 4



Ed Bristow

## Fall Technical Conference Instructors

University of Denver  
November 12-13, 2009



Peter Curtis



Pam Fromhertz



John B. Guyton



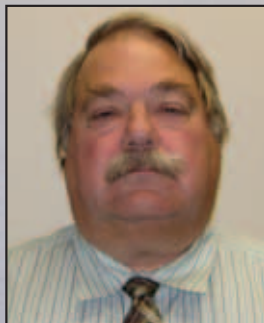
Gene Kooper



Thomas Meyer



Jennifer Novak



Dave Pehr



Harold Schuch



Donny Sosa

Prst std  
U.S. Postage  
PAID  
Denver, CO  
Permit No. 1222

Diana Askew, PLS  
PLSC, Inc.  
PO Box 704  
Conifer, CO 80433



## **THE TRIMBLE 36 PROGRAM GIVES VECTORS, INCORPORATED CUSTOMERS 0% LEASE FINANCING FOR 36 MONTHS!**

*In Select Situations*

## **NOW IS YOUR CHANCE TO GET THE EQUIPMENT YOU NEED!**



**TRIMBLE R8 GNSS BASE & ROVER**

**TRIMBLE R6 BASE & ROVER**

**TRIMBLE 5800 BASE & ROVER**

**HPB450 RADIO'S**

**TRIMBLE TSC2 DATA CONTROLLERS**

**S6 ROBOTIC TOTAL STATIONS**

**VX SCANNER SPATIAL STATION**



**VECTORS KEEPS A FULL INVENTORY IN STOCK AND  
IS AVAILABLE FOR IMMEDIATE DELIVERY!**

### **PROGRAM HIGHLIGHTS**

- Minimum transaction size is \$20,000.00
- Subject to credit approval
- Available only through Trimble Financial Services and Vectors, Incorporated
- Up to two-day training and installation
- Equipment listed above is ready for immediate delivery
- Vectors gives complete training and installation with every purchase

**FOR ADDITIONAL INFORMATION, CONTACT**

**VECTORS, INCORPORATED**

*A Company Working for Land Surveyors*

### **LOCATIONS:**

5500 Pino Ave. NE

Albuquerque, NM 87109

Phone: (505) 821-3044

Fax: (505) 821-3142

Toll Free: (866) 449-3044

8811 E. Hampden Ave, Ste. 110

Denver, Colorado 80231

Phone: (303) 283-0343

Fax: (303) 283-0342

Toll Free: (877) 283-0342

Visit our website at: [www.vectorsinc.com](http://www.vectorsinc.com)

**Professional Land Surveyors  
of Colorado, Inc.**

AFFILIATE—NATIONAL SOCIETY OF  
PROFESSIONAL SURVEYORS  
MEMBER—COLORADO ENGINEERING COUNCIL  
MEMBER—WESTERN FEDERATION OF  
PROFESSIONAL SURVEYORS

**OFFICERS (2009)**

Tom T. Adams  
*President*  
1210 24th Lane • Pueblo, CO 81006  
O: (719) 546-5454 F: (719) 546-5414

Michael M. Greer  
*Vice President*  
7174 Union Street • Arvada, CO 80004  
O: (303) 271-8787 F: (303) 271-8706

Diana E. Askew  
*Executive Director/Secretary-Treasurer*  
12322 S. Wamblee Valley Road • Conifer, CO 80433  
H: (303) 838-7577 O: (720) 225-4609 F: (720) 946-0973

**2009 PLSC CHAPTER  
ORGANIZATION**

**CENTRAL COLORADO PROFESSIONAL SURVEYORS**

**President Todd Beers: 303-220-6411 (O)**

Vice President, Joe Conway; Secretary, Norm Simonson  
Treasurer, Aaron Willis

Directors: Earl Henderson, James "JJ" Rihanek, Jim Beatty,  
Rob Snodgrass, Chris Rami, Jim Holben, Warren Ruby

**NORTHERN CHAPTER - PLSC, INC.**

**President: Ron Perkins: 970-420-5542 (O)**

President-elect: Carl Sumpter; Secretary/Treasurer, Rob Hintz  
Directors: Bennie Salgado, Laine Landau, Bob Edmonds,  
Steve Varriano

**NORTHWEST 1/4 COLORADO  
LAND SURVEYORS**

**President: Gordon Dowling 970-276-3613 (O)**

Vice President, John C. Noonan; Secretary/Treasurer, Brian T. Kelly  
Directors: Thomas H. Effinger, Jeffery A. Gustafson

**SOUTHERN COLORADO PROFESSIONAL  
LAND SURVEYORS**

**President Mark Johannes: 719/633-8533 (O)**

Vice President: Joe Alessi; Secretary: Bill Brooks;  
Treasurer: Daniel Hanten

Directors: Nathan Lira, Mike Mincic, Dennis Craig,  
Steve Parker Mike Bouchard

**SOUTHWESTERN CHAPTER - PLSC, INC.**

**President Tom E. Au: 970/385-0563 (O)**

Vice President, Clyde J. King; Secretary, Robert L. Trudeau  
Treasurer, David L. Sieler

**WESTERN COLORADO LAND SURVEYORS**

**President Richard Mason: 970/243-8300 (O)**

Vice President: Thomas Sylvester; Sec'y-Treas.: Stanley Werner  
Directors: Leslie Doehling, Patrick Green, Jonathan Kobylarz,  
Dennis Shellhorn, Scott Thompson, Peter Krick and Mike Drissel

**COLORADO SPATIAL REFERENCE NETWORK**

**President: Dan Smith: 303-512-4401**

Vice President, Brian Dennis; Secretary, Jan Sterling;  
Treasurer, Todd Beers

Directors: Roger Nelson, Matthew Barr, Pam Fromhertz,  
Lawrence deVries, Jack Sparks

# SIDE SHOTS

November Journal 2009  
Volume 40 Number 4

■ President's Letter .....	4
■ From the Editor .....	5
■ RTK GPS Networks .....	6
■ Control Points – Statute of Frauds .....	10
■ Report of the State Board of Licensure for Architects, Professional Engineers, and Professional Land Surveyors .....	13
■ PLSC Fall Technical Sessions .....	12
■ WestFed Board of Directors Meeting Report .....	14
■ Nomination Form .....	17
■ PLSC Board of Directors Meeting Minutes .....	18
■ GEOID 09 Now Available .....	22
■ Chapter News .....	23
■ Sustaining Members .....	26

## This Month on WWW.PLSC.NET

*In the online version, click on the titles below to download the documents.*

The latest course and registration information for the 2009 Fall Technical Session and PLSC Annual Meeting at the University of Denver.

Expanded version of the September, 2009 PLSC Board of Directors meeting minutes, including the latest proposed changes of the Legislative Committee.

*Side Shots is the official publication of the Professional Land Surveyors of Colorado, Inc. and is published quarterly for the betterment of the surveying profession.*

**Tom T. Adams**  
*President*

**Michael Greer**  
*Vice President*

*For Editorial Correspondence, contact:*

**John B. Guyton**

*Editor: Side Shots*

3825 Iris Ave., Boulder, CO 80301

303-443-7001 • jguyton@flatsurv.com

*This publication is not copyrighted and articles may be reprinted with due credit.*

*Statements made and opinions expressed are from the contributors and do not necessarily express the official views of the Professional Land Surveyors of Colorado, Inc.*

*Deadlines for editorials, articles, pictures and advertising are January 1, April 1, July 1 and October 1. All material received after the current deadline will appear in the next issue of Side Shots.*

*We would like to invite anyone who is interested to advertise in Side Shots.*

*Do you have something you want to sell, trade or buy? Why not use Side Shots for your next ad? We can also reproduce business cards for advertising. Ad space reservation must be arranged with Diana Askew, 12322 S. Wamblee Valley Road, Conifer, CO 80433; 303-838-7577.*

*Ad copy may be sent to: diana.askew@evcohs.com before the editorial deadline (January 1, April 1, July 1 and October 1).*

**Current Advertising Rates:**

*Business card size or less - Member \$25.00; Non-member \$30.00*

*One-Half Page - Member \$115.00; Non-member \$150.00*

*Full Page - Member \$225.00; Non-member \$300.00*

*Color advertisements — add 33 percent*



# PROFESSIONAL LAND SURVEYORS OF COLORADO, INC.

P.O. Box 704, Conifer, CO 80433

AFFILIATE - NATIONAL SOCIETY OF PROFESSIONAL SURVEYORS

MEMBER - COLORADO ENGINEERING COUNCIL

MEMBER- WESTERN FEDERATION OF PROFESSIONAL SURVEYORS

OFFICERS (2009-2010)



## MICHAEL M. GREER

VICE PRESIDENT  
7174 UNION STREET  
ARVADA, CO 80004  
H: (303) 279-5452  
O: (303) 271-8787  
F: (303) 271-8375

## TOM ADAMS

PRESIDENT  
1210 24TH LANE  
PUEBLO, CO 81006  
H: (719) 296-8262  
O: (719) 546-5454  
F: (719) 546-5410  
TOM\_ADAMS@Q.COM

## JOHN B. GUYTON

PAST PRESIDENT  
WFPS DELEGATE  
FLATIRON, INC.  
3825 IRIS AVENUE, STE. 395  
BOULDER, CO 80301  
O: (303) 443-7001  
F: (303) 443-9830

## DIANA E. ASKEW

EXECUTIVE DIRECTOR  
SECRETARY-TREASURER  
P.O. BOX 704 CONIFER, CO. 80433  
H: (303) 838-7577  
O: (720) 225-4609  
F: (303) 838-7577  
DIANA.ASKEW@EVCCHS.COM

## DIRECTORS (2007-2010)

### DOUGLAS R. BERLING

11536 COMMUNITY CENTER DR, #87  
NORTHGLENN, CO 80233  
H: (303) 252-1861  
F: (303) 252-1863

### MICHEAL BOUCHARD

929 CLIMAX LANE  
PUEBLO, CO 81006  
H: (719) 542-8055  
O: (719) 590-9194  
F: (719) 590-9111

### RUSSELL CLARK

CLARK LAND SURVEYING INC.  
119 NORTH WAHSATCH AVENUE  
COLORADO SPRINGS, CO 80903  
O: (719) 633-8533  
F: (719) 633-8822

### ROGER D. NELSON

19014 E. VASSAR DRIVE  
AURORA, CO 80013  
O: (303) 353-3916  
C: (303) 589-1875  
ROGER.NELSON@MERRICK.COM

## DIRECTORS (2009-2012)

### DAVID FREIENMUTH

PO BOX 497  
DURANGO, CO. 81302  
O: (970) 385-6891  
F: (970) 385-6925  
DAVID@ANIMASSURVEYING.COM

### GARY D. GABLE

6538 VIVIAN STREET  
ARVADA, CO 80004  
H: (303) 422-0199  
RalstonValley1@yahoo.com

### PATRICK GREEN

LANDesign  
326 MAIN ST. #100  
GRAND JUNCTION, CO 81501  
O: (970) 245-4099  
PATG@LANDESIGN-GJ.COM

### STAN VERMILYEA

9658 TOWNSVILLE CIRCLE  
HIGHLANDS RANCH, CO 80130  
H: (303) 471-8460  
O: (303) 796-4640  
C: (303) 930-6040  
STAN\_VERMILYEA@URSCORP.COM

## WFPS DELEGATE (2007-2008)

### DAVID C. DIFULVIO

FARNSWORTH GROUP  
8055 EAST TUFTS AVENUE, SUITE 850  
DENVER, CO 80237  
O: (303) 692-8838  
F: (303) 692-0470  
DDIFULVIO@F-W.COM

## NSPS GOVERNOR (2007-2008)

### WARREN D. WARD

P.O. BOX 653  
FRASER, CO 80442  
H: (970) 887-0462  
O: (970) 725-3347  
F: (970) 887-0463  
WWARD@RKYMTNHI.COM

## Dear Fellow Members:

Once again, it is that time for our PLSC Fall Technical Program and Annual Meeting, held on November 12th and 13th on the campus of the University of Denver. While the fall technical program provides an invaluable networking opportunity for PLSC members in these tough economic times, its primary purpose remains constant: Education. In addition to the *Side Shots* publication and the legislative lobbying on behalf of Colorado Professional Surveyors, this annual education program is one of the key benefits of your membership. Education is one of the primary missions of the PLSC, Inc. as noted in our Articles of Incorporation. And, the PLSC has provided this program at a much more competitive price than most other education seminars I have seen. With a top-notch lineup of speakers and topics, this year is no exception. Included this year are both professional/legal and technical courses. By the time you read this, you should have received an email registration notice from our Executive Director, Diana Askew. Otherwise, the latest course information and registration instructions can be found on the web-site, at [www.plsc.net](http://www.plsc.net).

We are also holding the PLSC Annual Meeting in conjunction with the Fall Technical Session. This meeting is an opportunity to meet with the PLSC Board of Directors and the rest of the membership. The annual meeting is the one meeting of the year that is especially of interest to the members of the PLSC, Inc. The Annual Meeting is the time and place for voting on major issues that affect Colorado professional land surveyors, to meet with the Board of Directors and other members, and to otherwise conduct business beyond the capacity of the PLSC board of directors. Any member of the PLSC is welcome to attend the annual membership meeting, even if you are not participating in any education seminars.

Your continued support, encouragement, and contributions to the PLSC are much appreciated. It is the active, supporting members of the PLSC, in my humble opinion, who are the leaders in setting standards of the industry. A large number of licensed surveyors in Colorado are not members of the PLSC, Inc., not to mention all of the non-licensed surveyors and survey-related professionals who could be productive associate members. Please help spread the word of the value of becoming a member. Our active membership can make a difference for land surveying in Colorado and guide the direction of the profession in these changing and financially challenging times. The PLSC Board of Directors *needs* your input and support.

I wish you all the best of success in the remainder of this year and let us all hope we can come out of these rough financial times stronger and better.

Sincerely, Tom Adams, PLS



DEDICATED TO THE IMPROVEMENT OF LAND SURVEYING EDUCATION AND PRACTICE.

# FROM THE EDITOR

I just heard that some members are thinking of quitting the PLSC over some recent preliminary decisions made by the board about educational requirements for licensure, apprenticeship rules, and dues. Quitting is NOT the solution – if you do that, you have no voice in affecting these policies. And these rules will still affect not only you, but all of the Colorado surveyors who are not part of the PLSC. Instead, contact any or all of the Directors listed on page 4 to express your views. They need to hear a variety of positions on the issues. You can also talk to your Chapter leaders, or better yet, attend the Annual Meeting that will take place during the Fall Technical Session and express your views at the meeting. Most of these issues are still at the committee stage and are a long way from becoming law, so it's not too late.

It's that time of year already, time for us to get in our "back to school" mood and show up for the Fall Technical Session at the University of Denver campus. The Education Committee has put together

another great program; the schedule of courses (which may have changed by the time you read this – check the [plsc.net](http://plsc.net) website for the latest information) can be found in this issue. The Fall Technical Session, combined with the Annual Board Meeting, has become the premier networking event for the PLSC. The Board would especially like to thank the following volunteers who worked so hard to put this event together: Mike Greer, Diana Askew, David Freinmuth, Tom Adams, Pamela Fromhertz, Todd Beers, and anyone else involved. So sharpen those pencils, or charge up that laptop, and come prepared to learn something new.

Election of officers and committee appointments for 2010 is coming up soon. We would encourage any of you to consider signing up for a committee that's of interest to you, either at the chapter or state levels. If you have filled out a card in the past but were never contacted, please try again. The Board would particularly like to see greater involvement of our younger mem-

bers, allowing them to move into roles of greater responsibility and visibility, to build their resumes, and to forge the future policies of our professional organization.

Finally, I would like to encourage any of you to think about contributing a paper on a surveying or GIS-related topic of interest to our readers of Side Shots. Brian Dennis of the CSRN is the latest to step up to the plate, with this month's informative article on the RTK GPS Networks. This kind of sharing of information fits right into the educational advancement goals in the mission statement of the PLSC. If you have an idea and want to test it out before committing to writing anything, send me an email at [jguyton@flatsurv.com](mailto:jguyton@flatsurv.com). Your article title will look great in the publications list on your resume!

John B. Guyton  
Editor



## Your deadlines <sup>are</sup> our deadlines



Custom orders your way ... when you need them.

When your name is on it, our name is behind it.

**Berntsen delivers.**

The professional's choice in survey products • [www.berntsen.com](http://www.berntsen.com) • 877.686.8561

# RTK GPS Networks

By Brian Dennis, PLS  
Vice President, CSRN

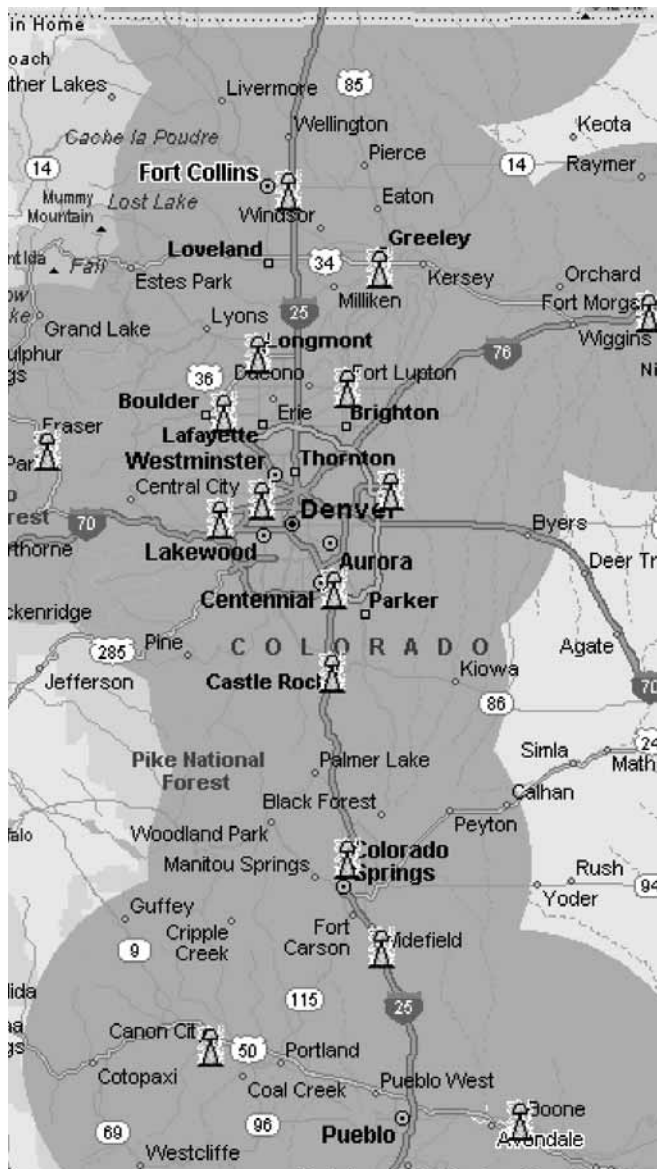
We find ourselves in a new era of GPS with the implementation of the RTK GPS Networks in Colorado within recent years. This has become an excellent tool for the surveyors to enhance their existing services and expand into other services for the geo-spatial environment. It must be remembered that the network is just another tool in the toolbox and not a catch all, save all solution. We now have another method of creating magic numbers out of the infamous black box. With the complexities that the networks introduce, it brings the need for solid survey practices and procedures to the forefront. I applaud the PLSC for recognizing this concern three years ago and initiating the creation of the Colorado Spatial Reference Network (CSRN), now a chapter of the PLSC. The CSRN has recently focused

on the education aspect of the networks and outreach to the manufacturers to communicate with the CSRN, so the network users have a vehicle or clearing house for information regarding the networks. The CSRN mission statement and membership information can be found at our website at [www.csrn.us](http://www.csrn.us). The CSRN has recently created a brochure titled "Network GPS Real Time Positioning Best Practices" to advance our mission to educate the network end user.

Not long ago, data capture was primarily the sole realm of the surveyor. This was especially true when the data captured was required to be geo-referenced or transformed into a specific coordinate system i.e. state plane, state plane modified or UTM. Not the case anymore, as we find this service being redistributed throughout the GIS community with the introduction of the RTK GPS Networks and the sub-meter hand held GPS units. I hear the term "survey grade" being used often now that this service has been expanded into other professions. I generally hear this term associated with some qualifier that "survey grade" equals 2-3 centimeters or even sub centimeter versus "mapping grade" which equals sub-meter or more recently sub-foot. I believe "survey grade" is more than just a tolerance number for precision. It is the survey practices and procedures employed to ensure those tolerances have been met and not just relying on magic numbers in that black box. To not rely on the black box the data must be challenged. Once challenged and analyzed, and the data meets the professional standards put in place, it then can be called "survey grade." With the RTK GPS Networks, this term has become more of a recent discussion with the survey and GIS professions. It is an ongoing discussion that you may be using the network but it does not mean you have "survey grade" results, even though the network was designed to produce survey acceptable tolerances.

Whether you require "survey grade," "mapping grade" or another tolerance to meet your client or project needs, the RTK GPS Networks are an excellent tool to help you accomplish your goals. With the introduction of the networks it is possible to instantly geo-reference and stream line any data collected that is within the networks framework. In addition, when out of the network framework you can employ the use of OPUS from NGS to continue the geo-reference effort with your projects. If you combine or compare OPUS solutions with your network solutions you should know if the network you are utilizing is broadcasting data based on the same datum provided by OPUS. This could be one of several such as, NAD 83, WGS84 or ITRF2000, all being earth centered / earth fixed origins, but you must know the datum as each one will produce a different positional result.

This brings the need for education on the networks, GPS and general geodesy back to the forefront. This is something we, as a profession, may have gotten loose on because while RTK GPS has been available for some



Front Range RTK GPS (GNSS) Network



ACCESS



## TRIMBLE R8 GNSS + TRIMBLE ACCESS

You don't get ahead by thinking about features.



### You think about efficiency.

Surveyors count on Trimble® solutions to finish work faster.

Trimble Access is a full-featured field solution designed for fast results. Based on the familiar structure of Trimble Survey Controller, Trimble Access has the versatility to take on any surveying challenge. Add any of the optional Streamlined Workflows for faster results on specialized projects.

The new Trimble® R8 GNSS delivers an unmatched ability to acquire signals – even near canopy or in urban environments where traditional receivers can't get the job done.

Trimble Access and the Trimble R8 GNSS – a combination you can count on when performance matters.

See this powerful system at work:  
[www.trimble.com/Access](http://www.trimble.com/Access)



© 2009, Trimble Navigation Limited. All rights reserved. Trimble, the Globe & Triangle logo, and Trimble TSC2 Controller are trademarks of Trimble Navigation Limited, registered in the United States and in other countries. Trimble Access is a trademark of Trimble Navigation Limited. All other trademarks are the property of their respective owners. SUR-179

**FOR MORE  
INFORMATION  
CALL YOUR  
TRIMBLE DEALER**

**AGA Geodimeter**  
Denver, CO  
303-431-1652

**Frontier Precision**  
Denver, CO  
800-652-1522

**Vectors Inc**  
Denver, CO  
303-283-0343



time now, we were able to work in a relatively local environment allowing errors to be contained. RTK GPS Networks have eliminated that local environment which used to be limited to roughly 5 miles with a standard single base solution to now being limited to the outreach of the network framework with baselines extending up to 30 miles. Not long ago these distances were only obtained using CORS and post-processing the data. Another complexity the networks have brought to the forefront is the challenge that Colorado faces with the geoid due to our geographical conditions. Another thought, does the network you are using provide a single base solution or is atmospheric modeling employed to obtain differential corrections? Another idea to think about that the 30 mile baseline now presents is weather. Is the weather at the base station near the same as the weather at your rover location? This was not as much of a variable when you set up your own base and remained within a 5 mile radius or less. But at up to 30 miles away, especially in Colorado, the weather at the base and at your rover may

very likely be different and even more so in the winter. You may have blue skies at the rover and blizzard conditions at the network base. This will affect your positional results. It forces the need to be aware of conditions outside of your local area. The idea of work local but think global is such a reality today it is mind boggling at times and weather is only a very small facet of the concept, just to get you thinking.

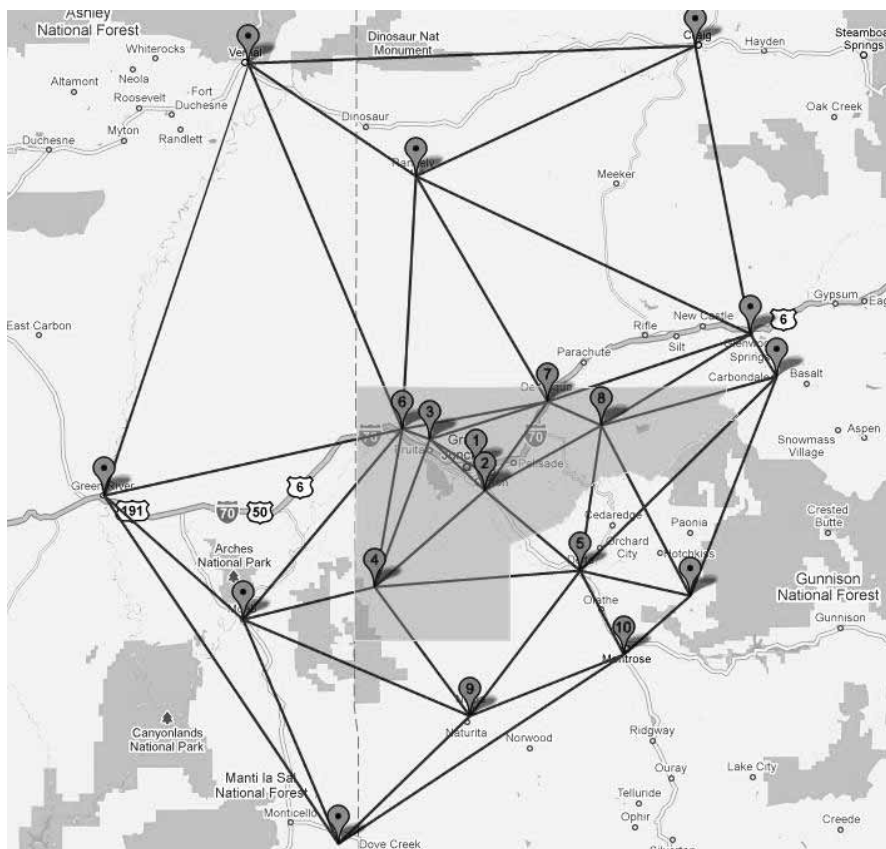
With all of these variables in motion; ellipsoids, datums, coordinate transformations, baselines and geoids, to name a few of the components, it is obvious that those utilizing the RTK GPS Networks must have at least a fundamental understanding of these components and GPS. The infamous "button pusher", no matter their profession, now has the ability to be more dangerous than ever. This is why the CSRN is committed to providing the opportunity to educate and inform. You might say, "What makes the CSRN qualified to educate and inform?" The CSRN is comprised of members of the survey, geodetic and GIS communities with backgrounds in geodesy, GPS network specific,

network end users of the private and public sector and network operators and manufacturers. We offer the most well rounded diverse group of experience, expertise and education regarding GPS and the networks operating in Colorado.

On September 17, 2009, the CSRN presented a half day track during the GIS in the Rockies conference at The Ranch in Loveland, CO and was a great example of the CSRN fulfilling our role to educate and outreach to other professions. The CSRN intends to participate with additional conferences throughout next year. This will be a compilation of presentations, workshops and end user panels. Currently there are no membership fees for being a member as we try to increase our membership base. Your membership is important to the effort as we also take your ideas to the operators and manufacturers of the networks as a voice for areas in need of improvement or additional services requested, providing for a more concentrated voice.

There are 3 major RTK GPS Networks available for public use to date within Colorado. Mesa County operates and maintains a partnership network that has extended well beyond the county limits and covers a majority of the Western Slope and into the eastern portion of Utah. Leica operates and maintains a partnership network that covers a majority of the Eastern Slope just north of Pueblo and into the southern portion of Wyoming. Trimble operates and maintains a network that covers the Front Range I-25 corridor from Colorado Springs to Fort Collins. Both the Leica and Trimble networks have future plans to expand and both are available for public use through inexpensive subscription fees. There are other networks within Colorado but are privately owned and not yet fully available to the public.

Through the CSRN website, we will provide information on the network developments as we continue working with the manufacturers and operators on their progress with their software and framework. We will also be listing the upcoming events that the CSRN will be participating in, to continue our education and outreach efforts.

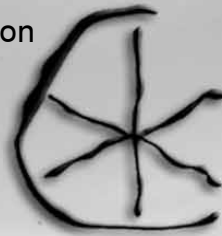


Western Slope RTK GPS (GNSS) Network



# NOTHING BEATS EXPERIENCE.

AGA is the most experienced sales and service organization in Colorado. So we'll get your crews up and running fast. And the faster they get efficient, the faster you will realize your return on investment.



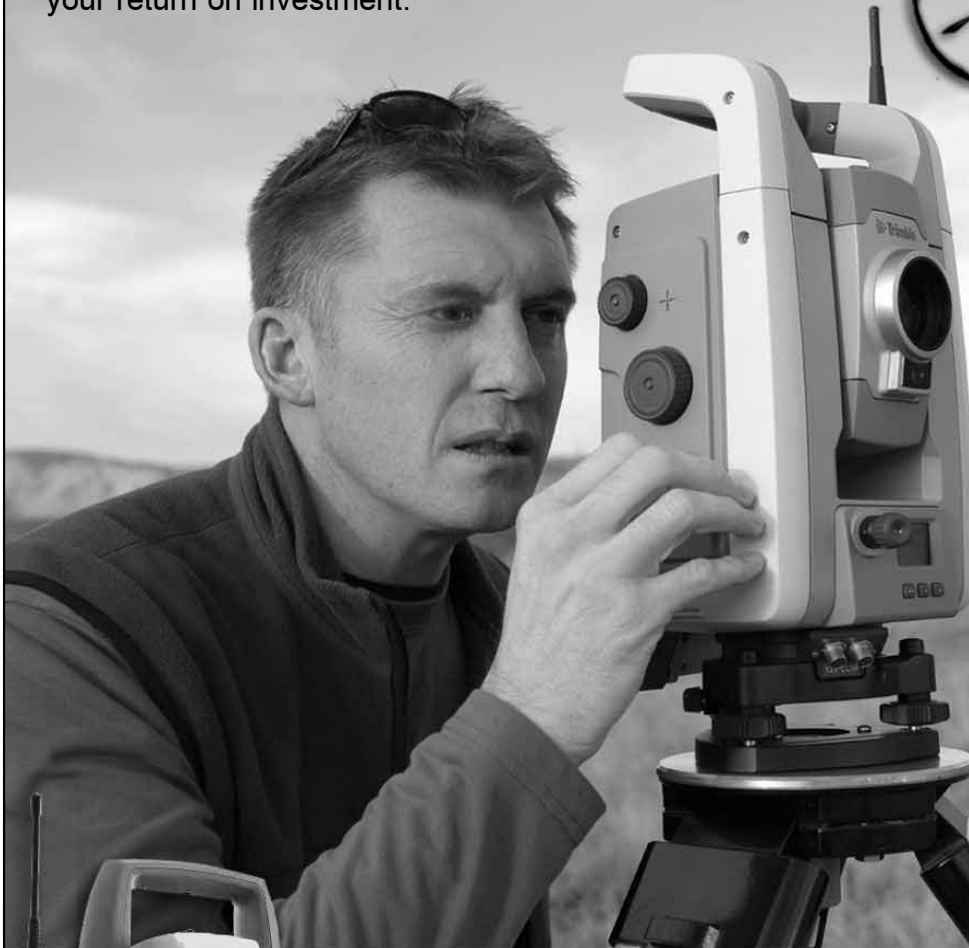
**AGA**

Advanced Geodetic Applications

14700 W. 66th Place, #10  
Arvada, CO 80004

**303-271-0077**

[www.agageo.com](http://www.agageo.com)



*With the most experienced service department in the region and in-house support, we have the resources to fulfill our commitment to total customer satisfaction. To further support our customers we offer accessories, training and both short and long-term rentals of the most current systems.*

## **We sell and support the complete line of Trimble surveying solutions**

- GPS field surveying systems
- GPS infrastructure solutions
- Robotic and servo-driven total stations
- Digital levels
- TDS data collectors
- Trimble Controllers and solutions



# Control Points Statute of Frauds

By Warren Andrews, PLS

In surveying legal books and in surveying seminars the term, "Statute of Frauds" is mentioned. But what is it?

The original English Statute of Frauds is basic to English and American law on the subject of written contracts including deeds for transfer of real estate. It was passed by the English Parliament and became law on the 24th of June, 1677 during the reign of Charles II and is cited as 29 Car. II, Cap. 3. It states in English (the original is probably in Latin) in part:

An Act for Prevention of Frauds and Perjuries

- I. For prevention of many fraudulent practices which are commonly endeavored to be upheld by perjury and subornation of perjury; be it enacted by the King's most excellent Majesty, by and with the advice and consent of the lords spiritual and temporal, and the commons, in this present parliament assembled, and by the authority of the same, That from and after the four and twentieth day of June, which shall be in the year of our Lord one thousand six hundred seventy and seven, all leases, estates, interests of freehold, or terms of years, or any uncertain interest of, in, to or out of any messuages, manors, lands, tenements or hereditaments, made or created by livery and seisin only, or by parol, and not put in writing, and signed by the parties so making or creating the same, or their agents thereunto authorized by writing, shall have the force and effect of leases or estates at will only, and shall not either in law or equity be deemed or taken to have any other or greater force or effect; any consideration for making any such parol leases or estates, or any former law or usage, to the contrary notwithstanding.
- VII. And it be further enacted by the authority aforesaid, That from and after the said four and twentieth day of June all declarations or creations of trusts or confidences of any lands, tenements or hereditaments, shall be manifested and proved by some writing signed by the party who is by law enabled to declare such trust, or by his last will in writing, or else they shall be utterly void and of none effect.

All US State laws on fraud in contracts derive from this. There is a very thick law book commonly called *Smith on the Law of Fraud* for anyone who wants to read further. It is actually entitled, *A Treatise on the Law of Frauds also containing the English and the American Statutes of Frauds Annotated* by John W. Smith, Bobbs-Merrill Company, Indianapolis, 1907, 1212 pages. It is exhaustingly comprehensive up to that date.

## Excerpt from the original statute

214

### 1<sup>o</sup> VICTORIÆ, Cap. 26.

"Personal Estate:"

Number:

Gender.

Tenant Right, Customary or Copyhold, or of any other Tenure, and whether corporeal, incorporeal, or personal, and to any undivided Chattel Interest) therein; and the Words "Personal Estate" shall extend to Leasehold Estates and other Chattels Real, and also to Monies, Shares of Government and other Funds, Securities for Money (not being Real Estates), Debts, Choses in Action, Rights, Credits, the Executor or Administrator, and to any Share or Interest therein; and every Word importing the Singular Number only shall extend and be applied to several Persons or Things as well as One Person or Thing; and every Word importing the Masculine Gender only shall extend and be applied to a Female as well as a Male.

II. And be it further enacted, That an Act passed in the Thirty-second Year of the Reign of King Henry the Eighth, intituled *The Act of Wills, Wards, and Primer Seisins, whereby a Man may devise and Thirty-fifth Years of the Reign of the said King Henry the Eighth, intituled The Bill concerning the Explanation of Wills*; and also an Act passed in the Parliament of Ireland, in the Tenth Year of the Reign of King Charles the First, intituled *An Act how Lands, Tenements, etc. may be disposed by Will or otherwise, and concerning Wards and Primer Seisins*; and also so much of an Act passed in the Twenty-ninth Year of the Reign of King Charles the Second, intituled *An Act for Prevention of Frauds and Perjuries*, and of an Act passed in the Parliament of Ireland in the Seventh Year of the Reign of King William the Third, intituled *An Act for Prevention of Frauds and Perjuries*, as relates to Devises or Bequests of Lands or Tenements, or to the Revocation or Alteration of any Devise in Writing of any Assets, or to any Estate *pur autre vie*, or to any such Estate being of any Will in Writing concerning any Goods or Chattels or Personal Estate, or any Clause, Devise, or Bequest therein; and also so much of an Act passed in the Fourth and Fifth Years of the Reign of Queen Anne, intituled *An Act for the Amendment of the Law and the better Advancement of Justice*, and of an Act passed in the Parliament of Ireland in the Sixth Year of the Reign of Queen Anne, intituled *An Act for the Amendment of the Law and the better Advancement of Justice*, as relates to Witnesses to Nuncupative Wills; and also so much of an Act passed in the Fourteenth Year of the Reign of King George the Second, intituled *An Act to amend the Law concerning Common Recoveries, and to explain and amend an Act made in the Twenty-ninth Year of the Reign of King Charles the Second, intituled 'An Act for Prevention of Frauds and Perjuries'*, as relates to Estates *pur autre vie*; and also an Act passed in the Twenty-fifth Year of the Reign of King George the Second, intituled *An Act for avoiding and putting an end to certain Doubts and Questions relating to the Attestation of Wills and Codicils concerning Real Estates in that Part of Great Britain called England, and in His Majesty's Colonies and Plantations in America*, except so far as relates to His Majesty's Colonies and Plantations in America; and also an Act passed in the



## Underground Consulting Solutions

PROFESSIONAL UTILITY LOCATING SERVICE

Engineering Locates \* Privately-Owned Utility Locating

**CALL UCS TO LOCATE ALL UTILITIES ON YOUR NEXT PROJECT**

- ✦ Utility locating for Design & Pre-Design
- ✦ Engineering Utility Locating
- ✦ No-hassle ease to request a locate
- ✦ High quality customer service
- ✦ Verification of utility placement to update As-Builds / old plans
- ✦ Estimating for utility locating portion of your projects
- ✦ Utility Locating for Privately Owned utilities



At UCS we care about YOU. Utility Locating is all we do. We do not diversify our interests, so you can be assured that every project receives our full undivided attention.

### **YES We Travel**

Call us for your jobs throughout Colorado. We will travel to sites out of state. Every project is important ... No job too big, no job too small.

#### ***Underground Consulting Solutions***

2701 West Oxford Avenue, Suite 6 Englewood, Colorado 80110  
Phone (303) 904-7422 FAX (720) 554-7889 Email: [ucs@totalspeed.net](mailto:ucs@totalspeed.net)



# PROFESSIONAL LAND SURVEYORS OF COLORADO, INC.

## 2009 FALL TECHNICAL SESSION

**WHEN:** NOVEMBER 12 and 13  
Registration begins at 7:00 a.m. and classes start at 8:00 a.m.

**WHERE:** DRISCOLL CENTER NORTH, UNIVERSITY OF DENVER  
2055 EAST EVANS AVENUE, DENVER, COLORADO

**SPEAKERS:** Dave Pehr, Thomas Meyer, Jennifer Novak, Gene Kooper, Ed Bristow, John Guyton, Donny Sosa, Peter Curtis, Pamela Fromhertz, Harold Schuch

Courses and schedule subject to changes; please go to [www.plsc.net](http://www.plsc.net) for updated information and to register online.

### PROGRAM:

#### THURSDAY, NOVEMBER 12TH

##### **LEGAL TOPIC**

8:00 a.m. – 5:00 p.m. Mr. David Pehr, Esq., "Easements and Adverse Possession Legislation"

##### **GEODESY TOPIC**

8:00 a.m. – 5:00 p.m. Dr. Thomas Meyer, "GPS Heighting"

**PLSC ANNUAL MEETING 5:30 p.m. – 7:30 p.m.**

#### FRIDAY, NOVEMBER 13TH

##### **TECHNICAL WRITING TOPIC**

8:00 a.m. – 5:00 p.m. Dr. Jennifer Novak, "Technical Writing Workshop"

##### **PLSS TOPIC**

8:00 a.m. – 5:00 p.m. Mr. Gene Kooper, "The Basics and Historical Evolution of Mineral Surveys" (a.m.) and "What Is in the 2009 Manual and Case Histories in Mineral Survey Retracements" (p.m.)

##### **LEGAL TOPIC**

8:00 a.m. - Noon. Mr. Ed Bristow, Esq. and Mr. John B. Guyton, "Ethics" and "Surveyor in Court"

##### **GEODESY TOPIC**

1:00 p.m. – 4:00 p.m. Dr. Harold Schuch, "Geodesy Revisited"

4:00 p.m. – 5:00 p.m. Ms. Pamela Fromhertz "Heights – Tying it all Together"

##### **GIS TOPIC**

8:00 a.m. – Noon Mr. Danny Sosa and Mr. Peter Curtis "Intro to GIS" including computer lab (max 20 seats)

1:00 p.m. – 5:00 p.m. Mr. Danny Sosa and Mr. Peter Curtis "Advanced GIS" including computer lab (max 20 seats)

#### FEE SCHEDULE 2009 (same as 2008)

**PLSC MEMBER:** \$ 200 1 Day - \$ 375 Both Days

**NON-MEMBER:** \$ 275 1 Day - \$ 475 Both Days

**STUDENT:** \$ 50 1 Day - \$ 90 Both Days

An additional \$25.00 will be added to registrations received after November 6. Catered lunches and snacks will be provided on both days. Online registration will be available at the PLSC web site ([www.plsc.net](http://www.plsc.net)).

### GENERAL INFORMATION

#### **SILENT AUCTIONS**

We will be holding several silent auctions during the conference. If your equipment room is cluttered up by equipment you are no longer using, please consider donating an item or two to the PLSC silent auctions.

#### **EXHIBITORS**

In keeping with our traditional practice, our Sustaining Members and other exhibitors have been invited to display their latest products and services. Exhibits will be in the Gallery of the Driscoll Center adjacent to the Ballroom. Please visit their displays and show our appreciation for their continued support.

#### **PARKING**

Parking is included and will be provided in assigned lots near the Driscoll Center. You will need to display a parking permit on your dash. Additional information will be included in the registration information

# Report of the State Board of Licensure for Architects, Professional Engineers, and Professional Land Surveyors

by Charlie Adams, Program Director

## The Complaint Process (continued)

As a part of this regular update for *Side Shots*, I would like to finalize the installments on the details regarding the complaint/investigation process in the event a licensee has a complaint against them at the Board office. In this update, I will continue to explain the complaint process to include what happens after the Board completes a formal investigation.

Sometimes, people who have filed a complaint, or people who have complaints filed against them, would like to be present at the meeting when the Board discusses the issue. Since meetings are open to the public, this is perfectly acceptable. Anyone can always contact the Board office, or the investigator assigned to the case, to inquire about the status of the investigation and the date and location of the meeting at which the Board will discuss the matter. However, the Board usually discusses the specifics of investigations during the executive session portion of the meeting. This part of the meeting is closed to anyone other than the Board, Board staff, and the Board attorney in the event attorney/client privileged information is discussed.

The Board is governed by the Colorado Open Records Act, which provides the public access to certain government documents. Confidentiality requirements vary from program to program and Board staff or the investigator assigned to the case can give information on this topic.

If, after a review of the investigative report, the Board finds that no license law violation occurred or that disciplinary action is not warranted, but that it has concerns about the conduct at issue, it may dismiss the case with a confidential letter of concern. If the regulatory authority finds that a violation occurred, it may impose discipline, including but not limited to a letter of admonition, a probationary license, a suspension or a revocation. Disciplinary cases will be referred to the Office of Expedited Settlement (ESP) for settlement or the Office of the Attorney General (OAG) for formal prosecution of the matter.

If a case is referred to ESP, the parties will be contacted by a staff member from ESP, who will provide the respondent with the offer of settlement approved by the

Board. Generally, if a settlement is not reached within 90 days, the matter will be referred to the OAG. If the case is referred to the OAG, the assigned Assistant Attorney General may prepare formal charges based upon the alleged violations of the statutes. If formal charges are filed, a hearing will be conducted before an administrative law judge at the Office of Administrative Courts to determine whether the charges are proven. At the hearing, the respondent has the right to be represented by counsel, and would have the opportunity to present and confront oral and documentary evidence, and to testify in his/her own defense.

If, after the hearing, a respondent is found to have committed a violation, the administrative law judge will issue an initial decision, which will include factual findings, conclusions of law and a recommended sanction. Either party may challenge the initial decision by filing exceptions with the Board office. The Board will then review the initial decision and issue a final agency order that may adopt, partially adopt or reverse the initial decision. If a violation of the statute is established, the final agency order may impose sanctions, which can include a letter of admonition, a fine, continuing education, probation, suspension or revocation of the license. The respondent always has the right to appeal the final agency order to the appropriate court.

That concludes my educational session on the complaint and disciplinary process. If you have questions, you can always call us at the Board office or check the Board website resources that have information about the complaint process as well as frequently asked questions. The Board website is located at [www.dora.state.co.us/aes](http://www.dora.state.co.us/aes). Please remember that neither the Board, the Board staff, nor the investigator can give you legal advice.



Charlie Adams

# Western Federation of Professional Surveyors Board of Directors Meeting Report September 12, 2009 in Denver, CO.

by David C. DiFulvio, PLS, Colorado Delegate

PLSC Delegates Dave DiFulvio and J.B. Guyton, in addition to several guests from PLSC, attended this Board meeting held in Denver. The meeting was attended by delegates from all 13 WFPS states except for Alaska. Guests in attendance included Curt Sumner, Executive Director of ACSM, past New Mexico delegate Alan Grace, and several guests from PLSC including Diana Askew, Mike Bouchard, Gene Kooper; and Pam Fromhertz.

New officers were installed by Curt Sumner: Ray Mathe (CLSA) as Chairman, Harold Baldwin (APLS) as Chair-elect. Dick Smith (MARLS) is now past Chair. Please refer to the WFPS web site, [www.wfps.org](http://www.wfps.org), for a listing of current officers and delegates.

New Chairman Ray Mathe gave a report on his ideas for future agenda items for the next couple of years. They include: work to promote national right of entry legislation; federal legislation to strengthen the Brooks Act / QBS selection process; create an on-line WFPS discussion board for those member states that do not have one; encourage the development of the CST Program in WFPS states, and others.

Gene Kooper gave an in-depth report of the status of the Colorado AES Board committee's work on the Architect's Continued Competency Program Rules. The general reaction of WFPS delegates was one of shock and amazement, with concern that the proposed rules will be

imposed on land surveyors eventually.

## **Selected highlights from WFPS member states' reports:**

**Alaska:** The ASPLS 2010 Conference is Feb. 22 – 26 in Anchorage with ASPLS celebrating their 50th Anniversary.... Continue to support legislation to protect signed and sealed documents from being altered without authorization and will likely be attempted next year.... The web site for their Board of Registration (BRAELS) is [www.dced.state.ak.us/occ/pael.cfm](http://www.dced.state.ak.us/occ/pael.cfm) .... The University of Alaska Anchorage Geomatics staff positions have

## **Complete Photogrammetric Services MAP WORKS**

**Contact: Ralph Vomaske, Certified Photogrammetist, ASPRS**

**7625 W. 5th Ave. #203E • Lakewood, CO 80226**

**Phone: 303-445-1856**

**Fax: 1-877-606-7982**

**E-mail: [mapworks@mho.net](mailto:mapworks@mho.net)**



been filled (3 count) and ABET accreditation is extended.... Richard Heieren, WFPS delegate and president of BRAELS is working on the concept of creating a question bank for state specific exams for surveying.

**Arizona:** APLS continues to work on stabilizing and continuing the Survey program at Phoenix College and other educational institutions in AZ.... The White Mountain Chapter is working to develop a draft proposal to implement mandatory Continuing Education provisions for licensure.... There appears to be a marked increase in the interest level for GIS, BIM, and "non" survey business models that can benefit from surveying experience.

**California:** The 2010 CLSA conference is Feb. 27 – Mar. 3 in Reno.... CLSA is continuing to work on an overhaul of their very popular web site, [www.californiasurveyors.org](http://www.californiasurveyors.org) and have added an employment hotline section on their forum for both employer and employee opportunities.... The CLSA recruitment campaign DVD is available to any other organization tailored with their name, logo, and contact information. Their voluntary professional development program is moving forward. CLSA members can keep track of their CE's on a secure website.... CLSA has polled their membership and found that 68% do not support a BS Degree in Land Surveying plus an additional number of years of qualifying to be eligible to sit for their exam.... Their Executive Committee and the Public Awareness Committee are working together on a promotional ad on SAYRADIO on our profession.... they had a 31% pass rate for their last State Specific Exam.

**Colorado:** JB Guyton presented a concise report on the activities of PLSC, including a thorough report on the AES Board's Continued Competency Program for the Architects and their proposed rules.

**Hawaii:** Their 2010 Conference is January 28 & 29 in Waikiki – JB Guyton will lead a session on the PLSS as part of their conference .... HLSA will be hosting the January WFPS Board meeting on January 30.

**Idaho:** Their 2010 conference is Mar. 10 – 15 in Moscow, ID.... Monument preservation with respect to highway construction remains an issue and ISPLS is working with their State Board and IDOT on clarification of when it is necessary to monument right of way acquisition.... There is discussion on splitting the surveying and engineering licensing boards.

**Montana:** MARLS total membership is 499, with 314 being active voting members, down approx. 10% from last year.... Their Monument Preservation bill, Senate Bill 193, passed their legislature.... Their 2010 conference will be Feb. 24 – 27 in Helena.... MARLS plans on awarding \$4,000 in scholarships and Trig Star awards.

**Nevada:** Their membership has seen a decline of 26% since 2008.... Their 2010 Conference will be held with CLSA February 27 – March 2 in Reno.... NALS awarded \$5,000 in scholarships for the fall 2009 semester to students at the College of Southern Nevada and Great Basin College.... their mandatory degree program requirement for licensure kicks in July 1, 2010.

**New Mexico:** The 2010 NMPS Conference will be

# COMM.TECH

## Increasing your bottom line

with customized drafting and design software solutions for 15 years

### products

- AutoCAD LT
- AutoCAD
- Map 3D
- Map Guide
- Land Desktop
- Civil 3D
- Raster Design
- Design Review
- DWG TrueView
- Subscription

### services

- State of the art training facility
- Implementation & customization
- License compliance
- Technical support
- Styles & standards set-up
- Pilot projects
- Transition assistance
- On-site consulting
- Government Specialist



**303.530.4976 | [www.ctcivil.com](http://www.ctcivil.com)**

**5398 Manhattan Circle**  
**Boulder, CO 80303**

**Autodesk**  
Authorized Training Center  
**Autodesk**  
Authorized Value Added Reseller

held March 13 and 14 in Albuquerque.... They are having a problem with their Board of Licensure over turnaround time on complaints against surveyors, taking several years in some cases with a large backlog of cases which have not even been started. NMPS has an Ethical Practices Committee to attempt to resolve differences between surveyors and/or the public without going to their BOL.... Is also working to start a Masters Degree Program in Surveying at New Mexico State University.

**Oregon:** PLSO's 2010 Annual Conference is January 13 – 15 in Salem.... Between 300 – 400 kids participated in their 2009 Trig Star program.... TwiST completed the 2009 program with 21 teachers filling spots.... Senate Bill 344 passed in their legislature, intended to make all County Surveyor positions appointed rather than elected.... GIS in Action has approached the PLSO Conference Committee to pursue partnering for the 2012 conference, tentatively set for Portland.

**Utah:** Their 2010 conference will be Feb. 18 and 19th in St. George.... UCLS has been actively working on the remonumentation of the Uintah Meridian located in Eastern Utah.... Their Education Committee has been busy going to schools to promote Land Surveying as a career, and has developed a power point presentation for career day presentations.... HB 153 passed in their legislative session for 2009. The bill modifies the criminal code regarding trespass on agricultural and range lands, creat-

ing multiple offenses that greatly affect surveyors. The UCLS legislative committee is working to amend this legislation to allow surveyor's access without the civil penalties attached.... UCLS awarded \$4,000 in scholarships to two individuals.... Their state's GIS office obtained funding to help rural counties obtain GPS coordinates on their land corners.... and they now have approximately 60 VRN's operational.

**Washington:** LSAW continues to meet with their Board of Registration discussing adoption of the NCEES model rules for defining what is or what is not considered Land Surveying.... Their 2010 Annual conference is scheduled for March 3 – 6, in Tacoma.... The revisions to their Permit to remove a Monument are moving ahead with the state Code Revisers' office.... Their TwiST program continues to be a big success, with two schools having created a survey oriented program within the high school system.

**Wyoming:** The 2010 PLSW conference will be Feb. 4th in Laramie in conjunction with the Wyoming Engineering Society's annual conference.... PLSW president Mark Rehwald sent letters to the University of Wyoming to convey PLSW's support for continuing the position of Director of the Outreach School's Land Surveying Certificate Program, also encouraging it's development into a four year land surveying degree program.

### **Other items of interest:**

the 2011 WFPS Conference will be held in association with the Washington and Idaho societies in Spokane, Washington around the first of March, 2010.

Curt Sumner provided a report on the activities of ACSM. It was noted that approximately 45 states now have some sort of continuing education programs related to re-licensure, and he noted that a couple of states in the east have had criminal issues with surveyor imposters. Curt is planning on preparing a press release for use by state societies to educate the public on what to look for with reputable land surveyors. The ACSM 2010 spring conference will be a joint conference, partnering with APLS, and will be held concurrent with the GITA annual conference on April 24 – 28, 2010.

Our next meeting will be held in Hawaii on January 30th, 2010.

End of Report





# PLSC Board of Director's Meeting Minutes

June 23rd, 2009, 6:00p.m. to 8:00 p.m.

Location: Merrick, 2450 South Peoria St. Aurora, CO and Call in Conference Call

## 6:00p.m. Call to Order

Thank you Merrick for paying for the conference calls!!!

## Recognition of Members Present

Dave Freienmuth  
Stan Vermilyea  
Tom Adams  
Gary Gable  
Roger Nelson  
Pat Green  
Warren Ward  
Doug Berling  
Diana Askew  
JB Guyton

Absent  
Mike Greer  
Mike Bouchard  
Russ Clark

## Welcome of Guests

none

## Additions, Deletions and Modifications to Agenda

Warren will scan and email notes for the RR Legislation to Tom for the President's Letter.

Tom sent out the 3 items that were part of the Action items – whatever happens with that Tom will share with Roger.

Warren Ward requests a revision to the minutes - NSPS Report ACSM is seeking funding from congress for Trigstar.

## Approval of Minutes from Previous meeting

Roger Moves to approve with revisions – Stan Seconds, Vote: unanimous.

## Secretary-Treasurer, Diana Askew

Financial Report – stocks with Merrill Lynch rebounding, savings doing well.

Nameplates to be ordered for everyone.

## WFPS delegates Dave DiFulvio and JB Guyton

Report from JB.

WestFed members coming to Denver during GIS in the Rockies

- an opportunity to kill two birds with one stone for the members.

- JB requests that Di and Tom and Mike attend the meeting.

New Manual coming out in September.

JB may teach a course on the PLSS in Hawaii Jan 28-29-30 2010 on the basics of the PLSS.

Section Township Range is on the NCEES and there are many Hawaiians who don't even know what a section is.

Dave may not be going – has a conflict.

Everyone needs to know that WestFed has very generous scholarships.

At the last meeting we talked about LOMR's, flood certs, spar, and Dave Gibson.

## MSCD Surveying and Mapping Advisory Council, chair JB Guyton

Added Tom Sylvester to the committee.

If you are a PhD please become the professor!

It is up to Dave Gibson as to whether we get together again:

- we will wait until he gets us together,
- we are losing ABET — we will have it for 11 more months — we don't have a head of the program because we don't have the program funded,
- with Tom Sylvester's addition and support on the western slope,
- Tom could be an adjunct professor,
- need to get Dave Gibson's syllabus to the students,
- they can still get a math minor as well,
- The program will now be a geomatics program,
- By the rules of ABET anyone can get the ABET back with geomatics – math minor is not required for ABET,
- The program is moving under a different school, not engineering,
- There may be an elective to get an ABET degree in geomatics.

How many people enrolled in the program? 12 on campus – distance learning is growing substantially.

When will Metro pass the distance learning on to staff?

JB to talk to Carol.

When will we start seeing geomatics in the ad in *Side Shots*?

## Legislative Committee Roger Nelson

Jump drives ordered with “blue book” preloaded.

- They will be handouts at Fall Tech and for sale.
- there will be an ad in *Side Shots*.

## Membership Committee, Chair Mike Bouchard

Tom is following up on membership for new PLS’s and LSI’s.

- The PLSC is offering memberships to new licensees since 2008.
- we are going to give out a lot of memberships this first round so we can catch up.

## Education Committee Report on Fall Technical Program

Action Item: Will have a date to advertise in *Side Shots* for JB by the weekend

Theme –Surveyors reaching the community?

We need to find speakers who will attract people.

Topics?

- Economy
- Add business oriented topics
- Talk on the new stimulus funds
- Technical writing

## Bylaws

Change to the by-laws is required.

Doug found the original Moos letter and it was supposed to go to the PLSC Scholarship Fund.

## Dues

- vote of the membership is necessary.
- the motion is poorly worded.

The Executive Committee will come up with a list of by-law revisions and then ask the board of directors to approve/decline, then will send the list out for a vote to membership.

Key element — after we come up with what are acceptable changes, there needs to be time to lobby those changes to the Chapters – buy in by the chapters to help get the buy in by the membership.

Itemized by vote – one choice is to vote yes for all.

**Action Item:** Tom to pick a date and call a meeting of the Executive Committee.

Offer a vote Ballot in *Side Shots* or vote online.

## Anti discrimination policy

**Action Item:** Di to send a snippet to JB and type up the paper copies we have to post online.

**Action Item:** Tom will send out a proposed meeting date via email.

Will discuss by-law revisions at the Fall Tech.

## Adjourn

8:03 PM — Gable motions, Roger seconded. Vote: unanimous.

## Next meeting

Thursday the 13th of August hosted at Merrick (This meeting was postponed until September 24th).

# PLSC Board of Director's Meeting Minutes

September 24th, 2009, 6:00p.m. to 9:30 p.m.

Location: URS DTC office, 8181 E. Tufts Ave., Denver, CO and Conference Call

## 6:00 p.m. Call to Order

### Recognition of Members Present

Patrick Green, Gary Gable, Stan Vermilyea, Tom Adams, JB Guyton, Mike Greer, Roger Nelson, Diana Askew, Dave Freienmuth, Doug Berling, Mike Bouchard

### Absent

Russ Clark, Warren Ward

### Welcome of Guests

Pamela Fromhertz

### Additions, Deletions and Modifications to Agenda

Pam will make an announcement.  
CSEF investigation status.

### Approval of Minutes from Previous meeting

**Motion: Roger Nelson Moves to table the approval of the previous minutes. Seconded by Mike Greer**  
**Vote: unanimous approval**

- Di will send Terry Sanders the approved minutes to post on the PLSC Web site.
- JB will publish the minutes as unapproved minutes

### Secretary-Treasurer & Executive Director, Diana Askew

Treasurer's Report.

- The Board requests to add a legend for the treasurer's report accounts.

**Motion: Roger Nelson Moves to approve the Treasurer's Report. Seconded by Gary Gable. Vote: unanimous approval**

### Financial Report

Account	8/31/2009 Balance
<b>Bank Accounts</b>	
Checking at Wells Fargo - Main	28,630.23
CSEF Checking at Wells Fargo	2,855.06
CSEF Savings at Wells Fargo	50,346.48
Merchant Checking at Wells Fargo	3,670.73
PLSC Savings at Well Fargo	40,090.51
<b>TOTAL Bank Accounts</b>	<b>125,593.01</b>
<b>Investment Accounts</b>	
Investment at Merrill Lynch Investments	23,275.65
Roger Patterson ICA Fund	21,246.42
Roger Patterson WMI Fund	20,866.41
<b>TOTAL Investment Accounts</b>	<b>65,388.48</b>
<b>OVERALL TOTAL</b>	<b>190,981.49</b>

## Executive Director's Report

The WestFed Meeting on September 12 in Denver was interesting and insightful.

Part of Gene's garage is now in my shed. I need to organize and inventory it all.

Charles Beresford with Nolte Associates donated leveling notes (described below)

*"Good morning Diana-*

*I have a client who used to be with the railroad, and she has sent me an original set of typed USC&GS First Order Leveling Notes from 1935, which she saved from the garbage bin. I would like to donate them to the PLSC for the Library. Please let me know if you would be interested in these for the Library, and if so, I will give to Todd to bring to the next meeting. If you feel the State Historical Society would be a better fit for these gems, please let me know.*

*Best Regards, Chuck"*

The Board requested Di to please scan them and email them to the Board,

New name badges were mailed out to the Board members,

GIS in the Rockies, PLSC Tract was well attended!

Need to get ready for the Fall Tech, so by the end of this month everything needs to be in place and ready to progress.

- *Side Shots* is going out on time so members will get the announcement for the Fall Tech,

A new online membership application is underway for 2010,

- I have answered requests for 2009 memberships after the July 1 deadline. After October I will not honor requests due to the membership discount for the Fall Tech.

Peg Ackerman is working for us as a lobbyist beginning this month.

- The contract which was signed by Tom Adams is through the 2010 term. This amount will be included in the 2010 budget.

## Vice President's Report

Mike has been appointed to the state board by Governor Ritter.

- Attended his first meeting this month.

## **Pam Fromhertz's Announcement**

Geoid 09 is out. Pam will send out an email about that next week.

Pam has moved her office to a new location at the Federal Center, Building 53 in the general sciences building with the water resource group.

## **Legislative Committee Report, Chair Roger Nelson**

***Motion: Roger Nelson moves for the Board to approve the proposed language to CRS 28-44-109. Seconded by Mike Greer. Vote: unanimous approval***

***Motion: Roger Nelson moves for the Board to allow the legislative committee to work to approve a revision of the language initiated by Douglas County and CCI to 38-50-101 which affected the LSP deposit law and was intended to affect the subdivision recording law. Seconded by Dave Freienmuth. Vote: unanimous approval***

***Motion: Roger Nelson moves for the Board to approve the language to increase the minimum education requirements and the minimum experience requirements for 12-25-214. Qualifications for professional land surveyor. Seconded by Mike Greer. Vote: 8 yea, 2 nay, motion approved***

## **MSCD Surveying and Mapping Advisory Council, Chair JB Guyton**

There have been recent meetings of the Advisory Committee with the administration of the Metro State College of Denver about the future of the surveying program, and progress is being made.

A candidate has been identified to potentially head the new program as a member of the faculty. Negotiations are in the early stages and are confidential. But it's a good indication that the college is dedicated to preserving and improving the program in these difficult economic conditions. MSCD has identified funding for new course development, another positive sign. And efforts to advance the syllabus developed by Dr. David Gibson are also progressing.

## **Publications Committee Report**

November issue of *Side Shots* is underway. All materials are needed by October 1st in order to run an ad promoting the Fall Technical Session, which begins November 12th. There were a large number of last minute registrations last year, and a near record number of attendees. A summary of the latest developments from the Legislative Committee is needed, as well as all chapter news items. Di Askew is working on coordination and billing of the advertisers. Charlie Adams is going to provide a report, including the process of how the state board of licensure handles complaints.

## **WFPS Delegates Report, JB Guyton**

I attended the Westfed meeting, held right here in Denver; Dave DiFulvio is working on a formal report for the next issue of *Side Shots*. I would like to thank Gene Kooper, Pam Fromhertz, Mike Bouchard, and Di Askew for being special guests at this meeting.

## **Membership Committee, Chair Mike Bouchard**

A letter being put together to offer PLSC membership to new licensees and LSIT's.

## **Nominations and Elections Committee, Chair Doug Berling**

It's time to start promoting nominations for the end of 2010. Doug will start putting something together for *Side Shots*.

## **Liaison Committee, Chair Gary Gable**

Engineers wary of continuing competency.

## **Awards committee, Chair Stan Vermilyea**

Updated form to be sent to JB for *Side Shots* and also to Di to send to the membership.

## **Chapter Reports**

Southern – Christmas party in planning.

SW Chapter – meeting on the first of October.

Western Slope – nominations for new officers and the spring seminar planning.

NW 1/4 - economic conditions.

CSRN – hosted a tract at the GIS of the Rockies.

## **GIS in the Rockies, Chair Mike Greer**

In the black.

Brian Dennis stepping down, Mike Greer to share the possible new chair.

Kayce Wolman continuing on the board.

Time and place of next meeting:

T-W-Th the last week of October or the first week of November in the southern part of the state.

## **8:30 Adjourn**

***Motion: Tom Adams moves to adjourn. Seconded by Roger Nelson. Vote: unanimous approval***



# GEOID 09 Now Available

By Pamela J. Fromhertz  
Colorado State Geodetic Advisor  
National Geodetic Survey, NOAA  
[pamela.fromhertz@noaa.gov](mailto:pamela.fromhertz@noaa.gov)

It is my pleasure to announce that NOAA's NGS published the geoid model, GEOID09, on Sept 22, 2009.

Information can be found here:

<http://www.ngs.noaa.gov/GEOID/GEOID09/>

Software: [http://www.ngs.noaa.gov/PC\\_PROD/GEOID09/](http://www.ngs.noaa.gov/PC_PROD/GEOID09/)

If you get to our Geoid pages some other way, please make sure you don't accidentally choose to download the USGG2009 or GEOID09BETA models.

Approximately 300 points were used in Colorado. Data used had both leveling and GPS data submitted to NGS and thus in the NGS database.

To check on the value of GEOID09 at a geographic location of your interest, you can use the below URL (until the specific Toolkit link is made active on our website, first choice under Tools):

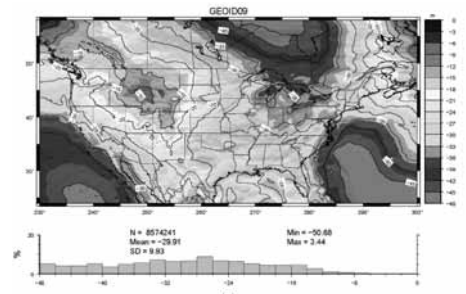
[http://www.ngs.noaa.gov/cgi-bin/GEOID\\_STUFF/geoid09\\_prompt1.prl](http://www.ngs.noaa.gov/cgi-bin/GEOID_STUFF/geoid09_prompt1.prl)

To compare with GEOID03 (just superseded) values, the link is:

[http://www.ngs.noaa.gov/cgi-bin/GEOID\\_STUFF/geoid03\\_prompt1.prl](http://www.ngs.noaa.gov/cgi-bin/GEOID_STUFF/geoid03_prompt1.prl)

It is anticipated that OPUS will soon start using the new geoid, so look carefully at your results. I heard a rumor that both might be used for awhile, but that is speculation.

Please distribute this widely to, or otherwise inform, other colleagues. As always, your feedback is of great interest to NGS.



## Now Available

*A masterful documentation and historical perspective of each initial surveying point for federal public lands in the United States. Published in 9x12 format, Initial Points of the Rectangular Survey System features a 4-color section with more than 130 photos depicting monuments and landmarks.*

Number of copies	Price
1	\$89
2-5	\$79
6-10	\$69

Call 303-428-9529  
to order

### C. Albert White's second book, **INITIAL POINTS OF THE RECTANGULAR SURVEY SYSTEM**

**Never before, in the history of surveying, has so much pertinent and interesting material been so meticulously compiled in one publication. (White personally visited EVERY Initial Point.)**



Mr. White's first book, *A History of the Rectangular Survey System*, published by the BLM in 1983, is considered the definitive work on the U.S. Public Land Survey System. Arguably the most distinguished authority on the history of nineteenth and twentieth century public lands surveying, White began his career with the General Land Office in 1946. Both as BLM and a private surveyor, he applied his zeal to a wide range of activities. White's expertise represents a bridge between the wisdom and experience of the American heritage of land settlement and the contemporary uses of surveying technology.

Published by the Colorado Professional Land Surveyors Educational Foundation, Inc., a non-profit foundation, Initial Points of the Rectangular Survey System is undertaken in the spirit of, and dedication to, Mr. White's remarkable contributions to his field. Net proceeds from its sale will be returned to the educational foundation.

## CCPS

The CCPS 2010 spring technical session is past the preliminary planning stages and entering the final planning phase. We anticipate three tracks for the workshop sessions: professional, business and technical. Any suggestions are welcome and can be provided to the CCPS website or any Board of Directors member.

Our August general meeting included Mr. Gene Kooper, PLS, as guest speaker and Mr. Peter Curtis with ESRI as guest vendor. Gene provided a history and summary of the continuing competency legislation for Architects that the PLSC membership will be discussing in the future year. The continuing education topic sparked a number of discussions. The CCPS board of directors will be soliciting its membership for their input and thoughts on continuing education\competency in order to provide the PLSC with data from surveyors in the region. Thanks to our vendor member who introduced the group to GIS and donated items for door prizes.

The next CCPS general meeting will be at the Northwest location, the Table Mountain Inn at 1310 Washington Avenue, Golden, Colorado on Thursday October 22, 2009 at 7:00 P.M. Free Dinner begins at 6:30 P.M., Cash Bar opens at 6:00 P.M. Guest Speaker: Earl Henderson, PLS, CCPS board member, will be discussing the four corners monument and its history. "The Kinks and the Corners" will be a brief and general discussion of the history of the severe angle points on the south (near Edith) and west (near Bedrock and Slick Rock) lines of the State of Colorado. The Corners aspect will be a brief discussion of the history of the Four Corners monument with emphasis on its establishment NOT on the 109th Meridian. Journalists and representatives of the Associated Press who want to get the story right for once are welcome to attend. Guest Vendor: Frontier Precision. General Membership

Meetings are held on the fourth Thursday of the following months: January, March, May, August and October.

CCPS awarded two \$500 scholarships at the August General meeting. The winners are Jordan Martinez and Amber Norton. Congratulations to the winners for their hard work and dedication!

Continued thanks to Alan Blair, PLS who is the CCPS web master assisting in the maintenance of the web site - we greatly appreciate all of your efforts, Alan!

Election nominations for 2010 open CCPS board of directors positions are being compiled and ballots will be mailed out in October to the CCPS membership.

The next Board of Directors Meeting will be held at: SEH Inc., 390 Union Boulevard, Suite 630, Lakewood, CO 80228 on Thursday, October 1, 2009 at 6:00 P.M. Board of Directors Meetings are held on the first Thursday of every month.

Respectfully submitted,  
Todd G. Beers  
CCPS President

## CSRN

The Colorado Spatial Reference Network, in conjunction with the PLSC, presented a half day track on September 17, 2009 at this year's GIS in the Rockies Conference. With a conference theme of Spatial Solutions for the New Economy, the PLSC track with a track theme of Beyond the Talk: Surveying in Today's Economy, provided excellent networking opportunities with geospatial professionals.

Many thanks go out to the organizers of this track and all of the CSRN presenters, including: Brian Dennis, Venue Coordinator; Kayce Wohlman, PLSC Track Chair; Ken Perry, Hixon SmartNet; Lee Meeks, Leica SpiderNet; Nathan

Pugh and Ken Joyce, Trimble VRSNow; Chad McFadden, Flatirons Surveying; David Siddle, Compass Tools; Robert Green, Vectors; Roger Nelson and Gerald Boyd, Merrick & Co.

The CSRN will begin collecting annual membership dues from PLSC members effective January 1, 2010, via the PLSC. Dues for sustaining and non-PLSC members (i.e. geospatial industries) will continue to be waived for 2010.

The next CSRN Open Board and Open General meeting will be held October 28, 2009, at CDOT Headquarters, 4201 E. Arkansas Ave., Denver, CO. A presentation by Boris Langmeier with Trimble on their VRSNow iScope service, and an Industry Showcase workshop in which participants will have an opportunity to help develop criteria for the submittal and publication of projects that have benefited from the use of real time reference networks, will be held.

The CSRN is holding elections for Officers and Directors for office in 2010. The positions that are open are President, Vice President, Treasurer and two (2) Directors.

If you are interested in further developing the CSRN and advancing real time reference networks in Colorado please contact us through our website at [www.CSRN.us](http://www.CSRN.us).

Dan Smith  
President – CSRN

## NC/PLSC

At our September meeting we explored strategies to increase attendance and participation in the Chapter. We are looking at our program to see where we can provide value for our members in terms of education, peer networking, and modernized methods of delivery and communication. Look for some interesting topics in the upcoming year, and hopefully, in years to

come. Sample topics discussed: Scanning, Crime Scene Surveying, Marketing, and Tips on Preparing a Winning SOQ.

We are looking forward to an update from our representative to the Legislative Committee, Ms. Kayce Wohlman, at our October Meeting. We meet at 6:00 P.M. the first Wednesday of the month, September through May and always welcome visitors from other Chapters. If you are a current Northern Chapter member and are not getting your monthly invitation, if you are a member of another chapter, or are involved in the surveying profession and would like to visit, please e-mail Rob Hintz [rhintz@fcgov.com](mailto:rhintz@fcgov.com) so he can give you directions to the next meeting.

Laine Landau  
Director, NC

## NW 1/4

The NW1/4 has not met in the past three months, due to this being our busiest time of year in what is still a very slow business environment. A real sign of the times is that Routt, Moffat, Grand and Jackson counties have between 50-60% of the number of employees in the

surveying business compared to two years ago. The resort communities are certainly not immune from the economic downturn.

What are companies doing differently to deal with today's business environment? The answers vary...some have laid off personnel, some have not rehired, others are bidding less, some are bidding more and the pricing structures for various services vary dramatically. Anyone watching the bidding process for construction projects is well aware of this. Surveying bids can vary from \$15,000 to \$120,000 on the same project, supposedly for the same scope of services!

We have met the enemy and he is us. Any surveying business manager or owner knows that a company cannot operate a survey crew for \$60/hr. Insurance costs, personnel costs, vehicle costs, equipment maintenance, software upgrades and rent simply make this an infeasible long term proposition. We have all performed various surveys for this type of cost, but we sure didn't do it on purpose! Yet that is the market we now find ourselves in, where certain companies are simply "buying" jobs to generate cash to pay short term obligations. The problem is simple-it doesn't

account for the longer term financial health of the company, or the potential liability associated with every project.

Many contractors, realtors and homeowners are pulled in by the apparent absolute bargain. We in the surveying industry will have the answer sooner rather than later-these are business practices that can only be sustained for six months to a year. We are nearing the time limit from when these bidding practices began, so I suspect by next spring we will find ourselves in a different business environment.

Brian T. Kelly  
Secretary Treasurer

## SCPLS

The 21st Annual Paul Grout Memorial Golf Tournament & Picnic was held on Saturday, August 8 at the Hollydot Golf Course in Colorado City. There were 54 players playing on 13 teams. Jeff Eickelman, Scott Bennet, Randy Reeves and Mike McKibbin were the winning team with a 9 under par 62.

A special thanks to our hole sponsors: Cardinal Land Surveying, Western States Surveying, Inc., Farnsworth Group, Clark Land Sur-

## CALL FOR SURVEYING STORIES



Do you have a story of a surveying adventure that you can share with our readers?

A recent edition of the New Hampshire Land Surveyors Association, *The Benchmark*, featured a story by Jim Franklin, LLS of an archeological surveying assignment he received in Morocco. The editor, Mark Stevens, LLS wants to make these kinds of stories a regular feature, saying that he is "looking for stories that high-

light an unusual, challenging, interesting, remote, or humorous surveying project that you've worked on. As we look back on our surveying careers, all of us have at least one memorable project that stands out for some unique reason."

Not to be outdone, I'm sure that our community of Colorado surveyors has plenty of entertaining stories that would make for some good reading in *Side Shots*. And any photographs or drawings related to the stories would be helpful.

Submit your ideas, outlines or full stories to the editor, at [jguyton@flatsurv.com](mailto:jguyton@flatsurv.com)

## CHAPTER NEWS

veying, Inc., Edward James and Assurance Risk Managers. Gifts were donated by the Southern Chapter of Professional Land Surveyors, Patti Bouchard and Farnsworth Group.

Following the tournament there was a picnic at Greenhorn Meadows Park catered by Jim Beatty of Classic Catering Company.

The Fall Workshop was held on Friday, September 11 at the Academy Inn in Colorado Springs. Dennis Moulard was on hand to offer a morning presentation on the new BLM Manual, the CFedS program and communication skills. His afternoon talk was on Land Description Systems.

Other presentations included ones by Comm-Tech on Civil 3D 2010 for Surveyors, the Corps of Engineers on small business opportunities and a representative from the Small Business Administration.

Mark Johannes  
President, SCPLS

## SWC/PLSC

The last meeting was held October 1st at Christina's Restaurant in Durango.

Those in attendance discussed the weakening economy, which is on most people's mind these days and how it has affected and will continue to affect everyone's workload in the near future.

Planning for the 2010 Four Corners workshop was discussed, but no concrete plans were decided upon. This will be an item to address at the next meeting.

Continuing competency is becoming a topic of some interest and was discussed at some length, but there are still differing views on its implementation and relevance.

David Freienmuth  
Member SWC



METROPOLITAN STATE  
COLLEGE of DENVER

*Extended Campus*

## DISTANCE DELIVERY OF COURSES FOR

### LAND SURVEYORS

Now it is possible to pursue or advance a career in land surveying via distance delivery.

- Select courses individually or as part of the degree completion program.
- Enroll year-around; take six months to complete a course.
- Take exams close to home or work.
- Communicate with your instructor by e-mail or telephone.

### Twelve Self-Paced DVD Lecture Courses

SUR 1510-4	Surveying I
SUR 2520-4	Surveying II
SUR 2530-4	Route Surveying
SUR 2550-3	Surveying Computations
SUR 3100-3	Survey Data Adjustment/Analysis I
SUR 3150-2	Astronomy for Surveyors
SUR 3220-2	Real Property Descriptions
SUR 3300-3	Photogrammetry
SUR 3540-3	Boundary Law I
SUR 3700-3	Geodesy I
SUR 4510-3	Map Projections and Coordinate Systems
SUR 4540-3	Boundary Law II

### On-line Course

COM 3615-3 Technical Writing for Surveyors and Engineers

### Noncredit LSI Review Course

Are you preparing for the PSI or PLS exam?

Help is available! Forty (40) hours of videotaped preparation for LSI and PLS exams.

For more information and registration visit our web site:

**[www.mscd.edu/surdd](http://www.mscd.edu/surdd)** or send an email to [mscd\\_surdd@mscd.edu](mailto:mscd_surdd@mscd.edu) or call Extended Campus at **303-721-1313**.



# C H A P T E R N E W S

## WCLS

By the time we get to our next meeting, the aspen will have begun to gild the high country with the early colors. The elk are already moving around. So, summer's ending and Tom Sylvester has put together another Mentor schedule in Delta County. I hope you'll look at the flyer published in this issue and pass it on to anyone that might be interested. Better yet, why not send some of your staff?

In July, WCLS hosted our scheduled meeting by serving a pic-

nic at Canyon View Park in Grand Junction. It turned out to be a small affair, but the company was good and we all had a good relaxing evening talking about anything but work. It was great to meet some of the spouses of those who attended. Without their company and great conversation, we probably would have broken up the party much sooner. I'd like to mention Mike Grizenko as our able chef and coordinator. Thanks Mike.

Our plan for September is to coordinate some final activity for the year, including nominating a new

slate of officers, establishing some education grants, and determining the details of our Spring, 2010 seminar. We are always glad to see new faces regardless of chapter affiliation. Anyone interested in attending can find us at the City of Grand Junction offices at 250 N. 5th Street in Grand Junction. There's always plenty of food, and we start serving at 6PM.

Rick Mason  
President, WCLS

# S U S T A I N I N G M E M B E R S

## ACCURATE CORE DRILLING, INC.

15550 Highway 86  
Kiowa, CO 80117

## AERO-METRIC, INC.

4708 South College Avenue  
Fort Collins, CO 80525

## AGA GEODOMETER

Paul McDaniel  
53 Meadow Lake Drive  
Lyons, CO 80540

## DANIEL W. AKIN

3370 Fantasy Pl.  
Castle Rock, CO 80109

## AMERIPRISE FINANCIAL

7979 East Tufts Ave., Suite 715  
Denver, CO 80237

## ASSURANCE RISK MANAGERS

Lisa Isom  
2851 South Parker Rd, Suite 760  
Aurora, CO 80014

## AXIS GEOSPATIAL, LLC

18050 East 104th Place, Unit F  
Commerce City, CO 80022

## BERNTSEN INTERNATIONAL, INC.

P.O. Box 8670  
Madison, WI 53708-8670  
www.berntsen.com

## COMM-TECH

5398 Manhattan Circle  
Boulder, CO 80303

## CONTRACT SURVEYORS, LTD.

2133 South Bellaire Street, Suite 14  
Denver, CO 80222

## WILLIAM H. DOLINAR

William H. Smith & Associates,  
PC  
P.O. Box 820  
Green River, WY 82935

## JOSEPH A. DONOFRIO

7355 Songbird Dr.  
Colorado Springs, CO 80911

## ESRI

One International Court  
Broomfield, CO 80021

## FLATIRONS SURVEYING, INC.

3825 Iris Avenue, Suite 395  
Boulder, CO 80301

## FRONTIER PRECISION, INC.

5855 East Stapleton Drive North -  
Unit A140  
Denver, CO 80216

## HIXON MANUFACTURING & SUPPLY CO.

1001 Smithfield Drive  
Fort Collins, CO 80524

## JEFFREY J. MACKENNA

Falcon Surveying Inc.  
9940 W. 25th Ave.  
Lakewood, CO 80215

## MERRICK & COMPANY

2450 South Peoria Street  
Aurora, CO 80014

## MOLLENHAUER GROUP

3900 S. Wadsworth Blvd., Suite  
325  
Lakewood, CO 80235

## MOUNTAIN NAVIGATION, INC.

1824 South Zang Court  
Lakewood, CO 80228

## NOLTE ASSOCIATES, INC.

8000 S. Chester Street, Suite 200  
Centennial, CO 80112

## NORTH AMERICAN MAPPING

88 Inverness Circle East, B-103  
Englewood, CO 80112

## NORTHSTAR ENGINEERING AND SURVEYING, INC.

111 East 5th Street  
Pueblo, CO 81003

## O'NEILLS POSITIONING SERVICES

2513 Lexington Street  
Lafayette, CO 80026

## PLANET-GIS-LLC

P.O. Box 1747  
Castle Rock, CO 80104

## SITWISE, LLC

7000 N. Broadway, Ste. 3-306  
Denver, CO 80221

## ROBERT M. STOLLARD

4005 West Linvale Place  
Denver, CO 80236-2201

## SKLD INFORMATION SERVICES, LLC

9540 East Jewell Ave., Suite A  
Denver, CO 80247

## SURV-KAP, Inc.

P.O. Box 27367  
Tucson, AZ 85726

## TOTAL POSITIONING SOLUTIONS

5385 Quebec Street  
Commerce City, CO 80022

## TOWILL, INC.

88 Inverness Circle East, Bldg. A  
207  
Englewood, CO 80112

## TRIMBLE NAVIGATION, LTD.

547 Kellenburger Road  
Dayton, OH 45424-1099

## TRIPOD DATA SYSTEMS

345 Southwest Avery Avenue  
Corvallis, OR 97333

## UNDERGROUND CONSULTING SOLUTIONS

2701 West Oxford Ave., Suite 6  
Englewood, CO 80110

## V3 COMPANIES OF COLORADO, LTD.

2399 Blake Street, Suite 130  
Denver, CO 80205

## VECTORS, INC.

8811 East Hampton Avenue, Suite  
110  
Denver, CO 80231

## WESTWOOD COLLEGE OF TECHNOLOGY

7350 North Broadway  
Denver, CO 80221

These firms support our organization. Please show them your appreciation with your patronage.



## Service - Training - Support - Rentals

### Frontier Precision VRS Rover Bundle

Buy a R8 GNSS Rover Bundle  
Get 1 year VRS service included.

Call us to find out how the Trimble VRS Now Network can increase your productivity.



**Frontier Precision offers surveyors more products and services than any other Colorado instrument dealer!**

- *Surveying*
- *Scanning*
- *Construction*
- *Mapping / GIS*
- *Infrastructure*
- *Factory Service*
- *Supplies*
- *Certified Training*



## Serving Colorado Surveyors Since 1991

5855 E. Stapleton Dr. North A-140, Denver, CO 80216  
800-652-1522 / 720-214-3500 / [www.frontierprecision.com](http://www.frontierprecision.com)  
Technical Support Hotline 888-797-4774





# HIXON

Mfg. & Supply Co.

[www.hixonmfg.com](http://www.hixonmfg.com)

**SALES - SERVICE - RENTAL**

**TWO CONVENIENT RETAIL LOCATIONS**  
**SURVEY, CONSTRUCTION, AND ENGINEERING**  
**INSTRUMENTS AND SUPPLIES**

**LARGEST GNSS RTK REFERENCE**  
**NETWORK IN COLORADO AND WYOMING**

**LOCAL SUPPORT, TRAINING, AND SERVICE**

**24/7 WEB STORE - [www.hixonmfg.com](http://www.hixonmfg.com)**

## Your Vision: a Complete surveying System



**Welcome to Leica Viva**  
**You won't find a more versatile System**

With Leica Viva you have a comprehensive system;  
every vision on every scale becomes a reality with  
ease. Realize your visions today and tomorrow.

... let us inspire you



Leica Viva TPS



Leica TPS1200+

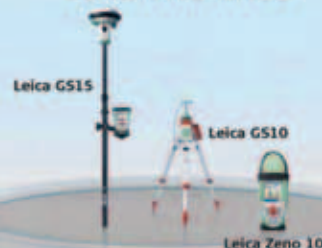
Leica Viva GNSS & TPS



Leica SmartStation

Leica SmartPole

Leica Viva GNSS



Leica GS15

Leica GS10

Leica Zeno 10



Leica CS15

Leica CS10

Leica SmartWorx Viva  
Leica Zeno Software  
Leica Geo Office

Leica Viva Controllers & Software

- when it has to be **right**

**Leica**  
Geosystems



Call Hixon Mfg. or visit [www.hixonmfg.com](http://www.hixonmfg.com) for additional information

### Fort Collins

1001 Smithfield Dr  
Fort Collins, CO 80524  
Phone: 970.482.0111



### Denver

8775 E. Orchard Rd., Unit 807  
Greenwood Village, CO 80111  
Phone: 303.694.0012