

August 2021

SIDE SHOTS

Professional Land Surveyors of Colorado

Volume 52, Issue 3

NEW FEATURE
Women in Surveying
SEE PAGE 10

Prst std
U.S. Postage
PAID
Denver, CO
Permit No. 1222

Becky Roland
Executive Director
PLSC, Inc
PO Box 441069
Aurora, CO 80044



HIXON

Mfg. & Supply Co.

www.hixonmfg.com

TWO CONVENIENT RETAIL LOCATIONS

SURVEY, CONSTRUCTION, AND ENGINEERING
INSTRUMENTS AND SUPPLIES

LARGEST GNSS RTK REFERENCE
NETWORK IN COLORADO AND WYOMING

LOCAL SUPPORT, TRAINING, AND SERVICE

SALES - SERVICE - RENTAL

24/7 WEB STORE - www.hixonmfg.com

LEICA VIVA TS16 ROBOTIC

WORLD'S FIRST SELF-LEARNING TOTAL STATION



800.762.5252

800.475.3422

CALL FOR DETAILS OR
TO SCHEDULE A DEMO



Power Search



Image Assisted



Artificial Intelligence



Advanced Automatic
Aiming



HEXAGON

Leica
Geosystems



FORT COLLINS

1001 SMITHFIELD DR
FORT COLLINS, CO 80524
970.482.0111 800.762.5252

www.hixonmfg.com



DENVER

8775 E ORCHARD RD, #807
GREENWOOD VILLAGE, CO 80111
303.694.0012 800.475.3422



**PROFESSIONAL LAND SURVEYORS
OF COLORADO, INC.**

AFFILIATE—NATIONAL SOCIETY OF
PROFESSIONAL SURVEYORS
MEMBER—ASSN. OF COLORADO ENGINEERING COUNCIL
MEMBER—WESTERN FEDERATION OF
PROFESSIONAL SURVEYORS

OFFICERS (2021)

RALPH PETTIT
President
president@plsc.net
720-400-3723

BRIAN DENNIS
Vice President
briandennis@gallowayus.com
719-337-1262

SHAUN LEE
Secretary/Treasurer
sdl051@yahoo.com
570-499-8073

BECKY ROLAND
Executive Director
PO Box 441069, Aurora, CO 80044 • broland@plsc.net
Phoenix AMC (303) 551-3266 F: (720) 230-4846

**2021 PLSC CHAPTER
ORGANIZATION**

CENTRAL COLORADO PROFESSIONAL SURVEYORS

President, Robert Boehm
Vice President, Derek Brown; Secretary, Cole Conger
Treasurer, Daniel Davis
Directors: Devon Arnold, Dane Courville, Jeff MacKenna,
Laura Minchik, Tony Peall, Brian Socia, Glen Stice

NORTHERN CHAPTER - PLSC, INC.

President: Dave Berglund
President-elect: Laine Landau; Secretary/Treasurer, Heather Lassner
Directors: Michael DeDecker, Ron Perkins,
Reade Roselles, Steve Varriano

**NORTHWEST 1/4 COLORADO
LAND SURVEYORS**

President: Brian T. Kelly
Vice President, William Whelan; Secretary/Treasurer, Jeff Gustafson
Directors: Thomas H. Effinger, Skidge Moon, Walter Magill,
Lloyd Powers, Peter Epp
President Emeritus: Gordon Dowling

**SOUTHERN COLORADO PROFESSIONAL
LAND SURVEYORS**

President: Don R. Hulsey
Vice President: Mark Johannes; Secretary: Steve Parker
Treasurer: Dan Hanten
Directors: Jon Tessin, Steve Rutzen, Eric White,
Joseph Alessi, III, Kenneth Gould, Jr., Dennis Craig, Spencer Barron
President Emeritus: Steve Parker
Honorable Lifetime: Nathan Lira, PLS

SOUTHWESTERN CHAPTER - PLSC, INC.

President: Todd Johnson
Vice President: Josh Casselberry; Secretary /Treasurer: Justin Bonnell

WESTERN COLORADO LAND SURVEYORS

President: Brian Bowker
Vice President: Chris Ransier; Secretary-Treasurer: Alex Lheritier
Directors: Scott Thompson, Peter Krick, Tom Sylvester
Sean Mullen, Kurt Shepherd, Alec Thomas, Ted Juntilla

SIDE SHOTS

AUGUST JOURNAL 2021

VOLUME 52

NUMBER 3

■ President's Letter	4
■ From the Editor	5
■ Bureau of Land Management Letter	6
■ The Geospatial Beehive	8
■ Women in Surveying: Kim Potts	10
■ 2021 PLSC Map Competition	12
■ PLSC Board of Directors Meeting Minutes	13
■ Secretary and Treasurer Reports	16
■ Chapter News	18
■ NSPS Update	20
■ WFPS Update	21
■ Sustaining Members	22

On the Cover: Kim Potts, Merritt LS, LLC

*Side Shots is the official publication of the Professional Land Surveyors of Colorado, Inc.
and is published quarterly for the betterment of the surveying profession.*

Steve Parker
President

Brian Dennis
Vice President

For Editorial Correspondence, contact:

Becky Roland

Interim Editor: Side Shots
PO Box 441069, Aurora, CO 80044
303-551-3266 • broland@plsc.net

*This publication is not copyrighted and articles may be reprinted with due credit.
Statements made and opinions expressed are from the contributors and do not necessarily
express the official views of the Professional Land Surveyors of Colorado, Inc.*

**Deadlines for editorials, articles, pictures and advertising are January 1, April 1,
July 1 and October 1. All material received after the current deadline will appear
in the next issue of Side Shots.**

*We would like to invite anyone who is interested to advertise in Side Shots.
Do you have something you want to sell, trade or buy? Why not use Side Shots for your
next ad? We can also reproduce business cards for advertising. Ad space reservation must be arranged
with Becky Roland, PO Box 441069, Aurora, CO 80044; 303-551-3266.
(Deadlines: January 1, April 1, July 1 and October 1).*

Current Advertising Rates:

*Business card size or less - Member \$25.00; Non-member \$30.00
One-Half Page - Member \$115.00; Non-member \$150.00
Full Page - Member \$225.00; Non-member \$300.00
Color advertisements — add 33 percent*



PROFESSIONAL LAND SURVEYORS OF COLORADO, INC.

PO Box 441069, Aurora, CO 80044

AFFILIATE – NATIONAL SOCIETY OF PROFESSIONAL SURVEYORS
MEMBER- WESTERN FEDERATION OF PROFESSIONAL SURVEYORS

OFFICERS (2021-2022)

BRIAN DENNIS
VICE PRESIDENT
C: (719) 337-1262

STEVE PARKER
PAST PRESIDENT
C: (719) 641-3355
land_surveyist@hotmail.com

RALPH PETTIT
PRESIDENT
c: (720) 400-3723
president@plsc.net

BECKY ROLAND
EXECUTIVE DIRECTOR
O: (303) 551-3266
broland@plsc.net

SHAUN LEE
SECRETARY-
TREASURER
O: (570) 499-8073
sdl051@yahoo.com

DIRECTORS (2021-2024)

BRIAN BOWKER
C: (970) 985-8086

IAN CORTEZ
O: (720) 523-6835

TOM SYLVESTER
O: (970) 255-7386

TODD JOHNSTON
O: (970) 769-8751

DIRECTORS (2019-2022)

ERIC CARSON
O: (303) 980-9104

SCOTT THOMPSON
O: (970) 244-1821

ERIC WHITE
O: (719) 268-8500

HEATHER LASSNER
O: (970) 310-4089

WFPS DELEGATES (2021-2022)

STEVE PARKER
C: (719) 641-3355

TODD BEERS
(O): 303-353-3528

NSPS DIRECTOR (2021-2022)

TODD BEERS
(O): 303-353-3528

STEVE PARKER
Alternate
C: (719) 641-3355

As we have recently celebrated our country's independence, I ask each of you to consider the great cost of the freedom we now enjoy and have enjoyed for the last 245 years. The things we enjoy today almost always come at a price. Our country's freedom was won by an epic struggle based on tremendous resolve that overshadowed, and was greater than the almost unimaginable loss. You are successful in your respective families because of the commitment and effort you put forth to ensure your relationships remain strong and healthy. That costs you something, but you deem it worthy and do whatever it takes to ensure its success. Let's take a moment now, and regularly, to remember and be grateful for all the wonderful things, people and privileges we enjoy today; many at the expense of others.



One of the things I am grateful for is the PLSC. That gratitude is why I serve along with others and make the small sacrifices to see it continue, thrive, and add value to each of your businesses and lives, and indirectly to your families and friends whom you hold dear. I am so grateful for all the volunteers that make the PLSC successful by going above and beyond, giving their time and resources.

Now I ask each of you to ask yourselves a question, "what is my role in the PLSC?" As you know, the PLSC exists by the funding it receives in memberships and the conference. Last year's conference saw a significantly reduced surplus due to the pandemic, causing drastically reduced attendance, combined with the added AV expenses to stream the event to so many of you who joined the sessions virtually. PLSC relies on the Summit surplus to balance the association's annual budget each year. Please consider what your involvement will be this year and in the years to come. I unashamedly ask you to promote membership in the PLSC at the appropriate level; voting member, associate member (only for non-licensed individuals), corporate or vendor. There is a membership application included in this issue. I also ask you to consider where you may be able to help your fellow professionals by volunteering for a committee or becoming a board member. Remember, anyone can be on a committee; you don't have to be a board member to make a real difference in this capacity.

Thank you, again, for allowing me the honor of being president of *your* PLSC. Thanks, in advance, for sincere consideration of how you can get involved and make your organization all it can be today, and for generations to come.

Reminder – as mentioned above, associate memberships were never intended to be utilized by licensed professionals. Our upcoming renewals will be sent to all licensed members at the voting member level as directed by our bylaws.

Gratefully yours,
Ralph Pettit

FROM THE EDITOR

In this edition of *Side Shots* we celebrate women in surveying with an outstanding article submitted by Tom Sylvester, PE and PLS regarding his valued professional colleague Kim Potts. Please keep the women in surveying write-ups coming, and while you're at it take a look at the latest NCEES Surveyor Profile featuring Kayce Keane, PLS: <https://ncees.org/surveyor-profile-kayce-keane/>.

Joey Stone of Denver Water submitted the article titled "The Geospatial Beehive," a thought-provoking take on professional cross pollination.

Thank you, Janet Wilkins, for the submission of the quarterly BLM Cadastral Letter. I highly encourage you to familiarize yourselves with the BLM research website <https://glorerecords.blm.gov>.

As always, a special thanks to Todd Beers, our Colorado NSPS representative and our WFPS delegate, for providing updates to activities pertaining to our

profession outside of Colorado. Also, the winners of our RMSS map contest have been entered into the NSPS map competition. Results to follow in the next issue.

And lastly, I encourage survey technicians and surveyors who are just starting out to look into the CST program with the NSPS: <https://cstnsps.com/>. Of course it would be great if the organization you work for sent you, but this is something you do for yourself and your career. So, take the initiative. We have at least three proctors on the front range who are ready and willing to assist you with taking your exams. Check it out!

—Steve Parker

For Editorial Correspondence, contact:

Steven Parker, PLS CFM CFedS

Editor: Side Shots

PO Box 441069

Aurora, CO 80044

719-641-3355 • editor@plsc.net

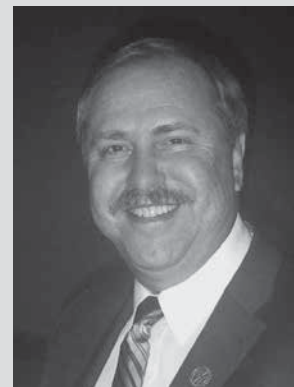
SAVE THE DATE



Rocky Mountain Surveyors Summit February 23-25, 2022

In-person event

Marriott Denver West
Golden, CO



FEATURED SPEAKER:

John Stahl, PLS, CFedS

PRESENTATIONS INCLUDE:

- *Boundary Disputes and Discrepancies*
- *Writing Land Boundary Descriptions*



United States Department of the Interior

BUREAU OF LAND MANAGEMENT
Colorado State Office
2850 Youngfield Street
Lakewood, Colorado 80215-7210



In Reply Refer To:
CO-956
9650

June 30, 2021

Steven Parker, Editor
Side Shots
PO Box 441069
Aurora, Colorado 80044

Dear Ms. Roland:

This letter informs you of official BLM cadastral surveys in Colorado that have been accepted from November 30, 2020, through February 3, 2021, officially filed, and are now available in the Public Room, Bureau of Land Management, Colorado State Office, 2850 Youngfield Street, Lakewood, Colorado 80215. The surveys will also be available at <https://glorerecords.blm.gov>.

The accepted surveys are listed below by township, range, meridian, group number, type, approval date and number of plats.

<u>Township</u>	<u>Range</u>	<u>Meridian</u>	<u>Group No.</u>	<u>Type</u>	<u>Approved</u>	<u>Plats</u>
T. 12 S.	R. 71 W.	Sixth	1711	Plat & Notes	11/30/20	2
T. 51 N.	R. 8 E.	NMPM	1680	Plat Only	12/29/20	6
T. 43 N.	R. 6 E.	NMPM	1500	Plat Only	01/07/21	1
T. 47 N.	R. 12 E.	NMPM	750/1500	Plat Only	01/13/21	1
T. 9 S.	R. 70 W.	Sixth	1718	Plat Only	01/26/21	4
T. 1 N.	R. 72 W.	Sixth	1735	Plat Only	02/03/21	2

As other surveys are completed, I will advise you of their acceptance. You may circulate this letter among the membership of the Professional Land Surveyors of Colorado.

Sincerely yours,

Janet Wilkins
Chief Cadastral Surveyor for Colorado

Need to get Utilities located?



Don't let these guys scare you..

Call UCS for Utility Locating

We will tell you what they are hiding under those boxes...



**Underground
Consulting Solutions**

**- QUALITY -
- DEPENDABLE -
- EXPERIENCED -**

*We'll get the job done right -
the first time*



**Underground
Consulting Solutions**



Private and Engineering Utility Locates

The Geospatial Beehive

By Joey Stone

Denver Water and Colorado GeoCoordinator Group

Traditionally there have been two predominate industries within the geospatial realm. The different industries go by many different names but the most common are Surveying and GIS. These two names have been used to distinguish many differences between the two disciplines, from professional status all the way to data quality. For years the two industries have tried to set themselves apart from each other and created discrete user groups. The result has created a strong paradigm that Surveying and GIS, although similar, do not belong together. This standard is inhibiting growth and even squashing revolutionary innovation. The two industries each stand strong alone but imagine the potential of the cross pollination of ideas, education, and tools that could occur if they were integrated. In nature cross pollination is essential for the evolution of life, the same statement can be made for business.

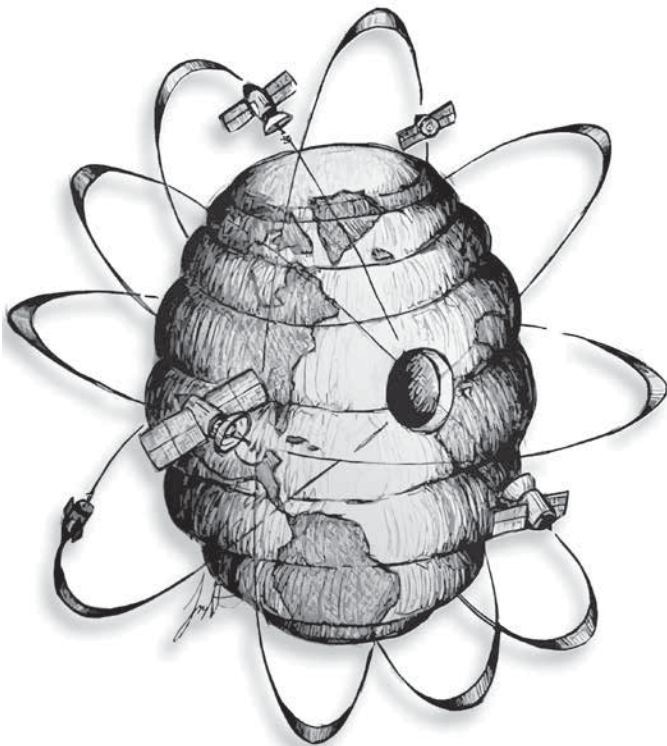
Pollination can be simplified to the transfer of pollen grains from one flower to another. Pollination leads to the production of fruits and seeds with the genetic material of both flowers. The most important actor in the pollination process is the pollinator. Pollinators visit different flowers for self-preservation purposes but in the

process pick up pollen and transfer it to other flowers. Cross pollination in business is very similar and is built on knowledge sharing and an open-source approach to ideas. As with nature, the critical players in the future geospatial industry will be the pollinators. To secure the future innovation and evolution of the geospatial space the pollinators need to be found and fostered.

Let's take the invention of the x-ray. A German physics professor Wilhelm Röntgen discovered the x-ray by accident while experimenting with Lenard and Crookes tubes. After imaging his wife's hand in 1895 he immediately saw the benefit to the medical industry and shared his discovery. By simply sharing his accidental discovery he changed the medical industry forever. There are countless examples of cross pollination between industries that have led to radical discoveries. I am not here to claim Surveying and GIS have never shared ideas but to help you imagine the potential of integrating education and industry specific tools.

Every successful industry starts with education in the classroom and in the field. Integrating subjects from both industries will create a more homogeneous geospatial curriculum. For example, the geodetic fundamentals taught within the surveying industry are lacking in most GIS curriculums. A complete working knowledge of geodesy would lead to improved dataset integration and metadata documentation. Cultivating a solid foundation of geodetic knowledge in both industries would resolve a majority of cross industry geomatic issues. The same can be said about the absence of geodatabase education for surveyors. Geodatabases can be a lucrative tool for the modern-day surveyor. Geodatabases can play a vital role in land surveying and design mapping. In land surveying the geodatabase allows property information to be integrated with other related data and stored geographically. On the flip side in design mapping where the coordinate value holds the most priority, geodatabases can store high accuracy coordinates and the relative information supporting the collection process and datum information. With a broader geospatial curriculum, young geospatial professionals will enter the workforce with a strong geodetic foundation and a large suite of tools at their disposal.

Both industries have a wealth of complementary tools and having employees who are proficient in both disciplines will drive future innovation. GNSS is one tool that is currently utilized by both industries and high accuracy workflows are on the rise with GIS Professionals. High accuracy GNSS is a great tool for data collection and creation, but many times uneducated users struggle to attain the full return on their investment. GNSS is the first measurement tool utilized that has no



direct measurement occurring during occupation. All other tools used to collect geospatial data require a physical measurement from some type of sensor. Total stations and scanners use lasers bounced off prisms or ground features to record true ground distances and relates those distances to a point on the earth. In a very simple explanation, GNSS uses radio signals from four or more satellites and calculates a location on earth. GNSS data needs to be accompanied with geodetic metadata to secure the large investment made in hardware and labor. A working knowledge of geodesy is essential to record the correct metadata to maintain the accuracy of a geodatabase far into the future. Not only can GNSS hardware be used to create data but can also be used to field discover existing data within a geodatabase. As more GIS databases become accessible in the field through high accuracy GNSS software many traditional databases will need to be spatially rectified. Rectifying databases can become extremely expensive and time consuming depending on the size of the database. A highly skilled professional with education in both survey and GIS would be essential to plan, collect, and maintain a high accuracy geodatabase. Having a spatially accurate geodatabase can be extremely valuable for field operations but its true value can be expressed through spatial analytics. Combining the education and tools typically reserved for the separate industries will improve workflows and analytics in both GIS and Survey. Combining high accuracy geodatabases with

an understanding of geodetic concepts like “grid vs ground” distance, area and volume analytics can be used in conjunction with traditional survey software. GIS can serve as an additional survey tool and capable of supplying additional analytic checks between software. GIS handles large datasets extremely well and, in many situations, can outperform survey software. The Survey industry has just scratched the surface of the true potential of using GIS software to supplement traditional workflows.

Cross pollination is the deliberate distribution of genes to produce fruits that support life on earth. The evolution of Surveying and GIS will depend on the deliberate integration of education and tools. Finding the geospatial pollinators and putting them in positions to make impactful decisions will elevate both industries to new heights. Future geospatial projects will require aspects of both industries and require teams of pollinators. As leaders we need to integrate educational curriculums and tools to build the geospatial beehives of the future.

Aibot X6

Flexible surveying & geo-mapping

- Safely go where conventional equipment can't reach
- Point cloud generation, volumetrics, GM creation
- Creation of location & inventory plans, topographic images, planning fundamentals, and aerial photos



Call 1-800-545-0932
for your demo

HOLMANS | USA
PRECISION PERFORMANCE SINCE 1955
6201 Jefferson St. NE, Albuquerque, NM 87109 | www.HOLMANS.com

Women in Surveying

Kim Potts – A True Professional

By Thomas W. Sylvester, P. E. and P. L. S.

Knowing this edition of Side Shots theme is Women in Surveying, it gives me great pleasure in introducing Kim Potts. Kim joined my company, Merritt LS, LLC, as she was finishing up her Associates of Applied Science degree in Mechanical Drafting from IntelliTec College in 2006.

I needed someone to serve as our AutoCAD Technician and Kim applied for the job. Her interview lasted four hours. I needed her to show me what she knew, what she didn't know, her willingness to learn, and ability to absorb new concepts. She passed with flying colors although she has since told me that she felt like a deer in the headlights that afternoon.

In a small company, we need everyone willing to do anything required to get the job done. One of my questions to Kim was "Do you do windows?" which was my euphemistic way of saying your duties will include your described work and any other work assigned. Kim was offered the job and accepted, and I am continually amazed at her versatility, intelligence, demeanor, and ability to get the job done, and I mean any job assigned.

When we needed someone to assist in the field, Kim was our go to backup. She always packed a set of field clothes should she be asked to work in the field. She took on the task of answering the phones for the company and I am convinced that her friendly and courteous phone etiquette garnered us many new clients and keep our existing clients happy.

As she gained more experience in drafting surveying plats, it was not long before she started absorbing the boundary law issues involved in surveying. To this day, she is my prime proofreader of anything that goes out of the office. If she can't understand a concept in a letter of report, I know that instead of trying to explain it to her, I need to re-write it. She has questioned on many occasions why I am doing something or making a certain decision on a survey. Often, it is just to learn more, but there have been plenty of occasions, that her queries led me to reevaluate which principles I was applying to a problem. Many of the queries were not just curiosities and a willingness to learn, but a diplomatic way of saying, "Tom, I think you should reconsider based on".

Kim not only helped us out in our field work but has willingly taken on some challenging projects in which we were involved. We had a big push to survey the Vulture Mine in Arizona, an underground gold mine that hadn't been opened up since Roosevelt closed the gold mines during WWII so miners could produce essential metals for the war effort. Attached are some pictures of Kim during that effort. She then had to interpret all our survey



Kim Potts, Merritt LS, LLC

data to draw the mine in three dimensions for our clients. That, in itself, was quite the challenge.

She has since joined me as an underground surveyor in coal mines, gold mines, and silver mines in western Colorado and I think she jumps at the chance to go underground when the opportunity arises.

During a downturn in business, Kim took a "walk about" for about three years with another company learning even more about the profession than I could offer her.

I was fortunate to get her back shortly after I started teaching the Land Surveying and Geomatics programs at WCCC while maintaining my company's surveying and engineering business. She is the glue that keeps everything working together and keeping me out of trouble.

She's worked with my previous Party Chief in the mountains, deserts, and canyons of western Colorado. Upon my Party Chief's retirement last year, Kim has taken on the mantle of my Party Chief and Survey Technician and proven to be well up to the task.

Kim is the perfect example of the proof that one doesn't need to be licensed to be a True Professional. I am fortunate to have her in my company and the profession is fortunate to have her contributions.

Do you know a woman in surveying that should be recognized? Submit your article to sideshots@plsc.net.

Complete Photogrammetric Services

MAP WORKS

Contact: Ralph Vomaske, Certified Photogrammetist, ASPRS

7625 W. 5th Ave. #110D • Lakewood, CO 80226

Phone: 303-667-3540

E-mail: gmapworks@gmail.com



Dreaming of incorporating UAS into your business?

Wanting to get FAA Remote Pilot Certified?

Let the FAASTeam help you build YOUR professional UAS team.

This UAS Certification Training course gives you the tools you need to pass your FAA Remote Pilot written exam. This one-day course will cover the key main elements of the 107 exam and provides you with additional at home study materials, including Air Craft's proprietary study guide, FAA manuals, practice exams, log book, and even flight exercises.

What you get:

- Eight hours ground school
- Proprietary study guide saves study time.
- Practice Exams
- All FAA Exam Study Materials
- Flight Exercises
- Bonus flying techniques

Our Instructors:

FAA Certified (Commercial & UAS)
FAA Safety Team Representatives
Hundreds of hours of real – world
UAS flight operation experience.

**Join us for our next UAS
Certification Class in Denver
Saturday, May 19th
Email bryan@air-craft.us for
more info or to register.**

2021 PLSC Map Competition

Congratulations to the following 2021 PLSC Map Competition winners. First Place maps were submitted to National Society of Professional Surveyors (NSPS). Winners of the NSPS Map Competition should be announced soon.

Boundary

1. Winding Trail Village (225 Points) – Kayce Keane
2. 5058 Magnolia Road (224 points) – Kayce Keane
3. Lake Gulch Whiskey Resort (205 points) – Diana Askew

Topo

1. Boulder Star & Panorama Point (226 points) – Kayce Keane
2. South Mesa Trailhead (218 points) – Kayce Keane
3. CCD Roslyn Maintenance Facility (208 points) – Josh Harrell

Become a Certified Survey Technician (CST)

No matter what the future holds, prepare to meet challenges head on. Future-proof your resume by becoming a Certified Survey Technician (CST). This unique four-level certification program indicates official recognition by NSPS that a person can perform surveying tasks at a specific technical level.

Show what you can do!
Decide between the field or office track.

Visit <http://www.cstnsps.com> for details.



**WESTERN COLORADO
COMMUNITY COLLEGE**
A Division of Colorado Mesa University

CHANGE YOUR LIFE WITH COLORADO'S ONLY LAND SURVEYING DEGREE PROGRAM

Sponsored by the PLSC, the Land Surveying and Geomatics programs at Western Colorado Community College are designed for students on a career pathway toward becoming a licensed Professional Land Surveyor.

WCCC OFFERS TWO PROGRAMS:

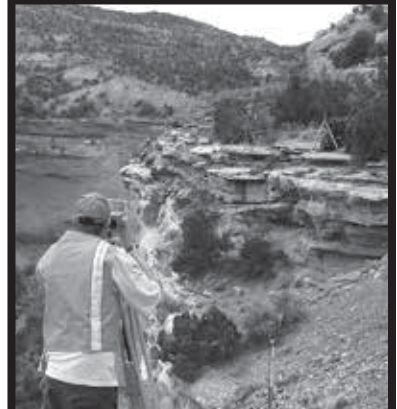
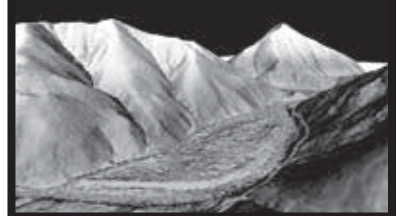
- **Associates in Applied Science Degree in Land Surveying and Geomatics** for those without prior college coursework. This program is designed to be completed within two years.
- **Post-baccalaureate Technical Certificate** for those with a minimum of a Bachelor of Science or Bachelor of Arts degree who need the required surveying curriculum to meet the education requirements to sit for the PLS exams. The Technical Certificate program is designed to be completed in one year.



Learn more at coloradomesa.edu/wccc/programs/land-surveying-geomatics



Contact WCCC Students Services at 970.255.2600 for admissions, registration and financial aid information.



PLSC Board of Directors

Meeting Minutes

June 8, 2021 • 4:30 pm

1. Call to Order: Pettit

Name	Position	Chapter	Attending?
Ralph Pettit	President	Central	x
Brian Dennis	Vice President	Southern	
Shaun Lee	Secretary/Treasurer	Central	
Becky Roland	Executive Director	n/a	x
Heather Lassner	Director	Northern/TrigStar	x
Eric Carson	Director	Central	
Brian Bowker	Director	Western	x
Ian Cortez	Director	Central	x
Todd Johnston	Director	Southwestern	x
Eric White	Director	Southern	x
Tom Sylvester	Director	Western	x
Scott Thompson	Director	Western, Legislative Co-Chair	x
Steve Parker	Ex-Officio	Southern/NSPS	x
Parker Newby	Non-Voting	Southwest	
Todd Beers	Non-Voting	NSPS/WFPS Delegate	
Guests:			
John Hunter		Geo-Coordinator	
Peggy Streicher		GIS in the Rockies	
Robert Boehm		Central Chapter	x
David Berglund		Northern Chapter	x
Willie Whelen		NW ¼ Chapter	
Brian Shaw		NOAA/NGS	x
James Combs		YSN	

2. Determination of Quorum (6 voting), determined

3. Any changes to the Agenda? Pettit

a. none

4. Approve May Minutes: Pettit

MOTION: To approve the May 2021 Minutes as presented. (TJ/IC)
Approved unanimously

5. Approve Budget Call Minutes: Pettit

MOTION: To approve the 2021 Budget Call Minutes as presented. (EW/IC)
Approved unanimously

6. Financial Items: Pettit/Lee/Roland

a. No report

7. Side Shots Update: Parker

a. The Editorial Committee met and discussed ideas for next issue

- i. Will have an article on outreach to military personnel
- b. Brian Dennis suggested an article/series on Women in Surveying
 - i. Need surveyors and their story
- c. June 30 is the deadline for the August issue
- d. Send content to sideshots@plsc.net
- e. Ralph Pettit to include an explanation of membership categories (Voting vs. Associate) and that PLS will be renewed at Voting Member level

8. Project Updates

- a. Colorado Railroad Museum Project: Hulse/Boehm
 - i. Cole Conger received the maps and delivered them to Shaun Lee
 - ii. Meta data needs to be defined prior to scanning
- b. Adams County: Berglund/Lassner
 - i. Nothing Significant to Report (NSTR)
 - ii. Road petitions have been scanned – need help with meta data
 - iii. Heather Lassner will ask Laine Landau to get in touch with Ian Cortez and keep him informed
- c. Sawyer Garston Collection: Parker
 - i. Equipment is currently on display
- d. Map Inventory: Lee
 - i. Need to define information required prior to sending request to the membership
 - ii. NSTR

9. Reports

- a. WCCC Update/Scholarship Committee Sylvester
 - i. No scholarship applications
 - ii. AES issue on WCCC application/education – cleared up the misinformation issue
 - 1. Received list of class titles that AES finds acceptable
 - 2. Tom Sylvester will develop a map for licensure for the PLSC website
 - 3. Tom Sylvester will ask if DORA/AES could provide licensure track info
- iii. Completed finals and in middle of summer courses
- iv. Dennis Moulard has a new Ethics book edition

TOPCON

LOCKHEED MARTIN
We never forget who we're working for™

sentera **dji**

Phoenix 2



Inspire 1 & 2



Phantom 4 Pro



Indago Mapper



Omni



RL-H4C



ES Total Station



FC-5000



HiPer HR



GT Robot



RL-SV2S



We Have Everything You Need!

If you're looking for great deals on equipment then call our experts or stop by one of our many locations and see for yourself what products and services GeoShack has to offer. We have everything you need to get the job done accurately and right the first time.

Don't forget to ask us about our **GeoShack Advantage** programs – where you can get support, training, and other services along with your equipment purchase.

GeoShack Denver

5385 Quebec Street
Commerce City CO 80022

For more info call

(303) 853-0311



For More Information Visit Us At: www.GeoShack.com

©2017 GeoShack. All Rights Reserved.

7.31_GS_AOLS_Ad_Denver

- b. GIS in the Rockies: Streicher
 - i. NSTR
- c. Colorado Coordinator Activities: Hunter
 - i. NSTR
- d. NGS Update: Shaw
 - i. Geospatial Summit videos have been posted
 - 1. <https://geodesy.noaa.gov/geospatial-summit/year-2021/presentations.shtml>
 - ii. OPUS Projects 5.0 going to beta testing any moment
 - iii. GPS on Benchmarks June 10 at 12PM
 - 1. https://geodesy.noaa.gov/web/science_edu/webinar_series/gpsonbm-update-june2021.shtml
- e. Executive Director: Roland
 - i. No additional items outside of agenda
- f. Lobbyist/Legislative Committee: Thompson/Pettit
 - i. Need Co-chair to replace Pettit
 - ii. Legislation Session closed today
 - iii. ILC pending legislation to force disclosure that ILC is not a survey
 - 1. Lobbyists setting up a stakeholder meeting
 - iv. Working on orphan parcel legislative guidelines
- g. Membership Committee: Carson
 - i. Membership Working Group Meeting
 - 1. Approve free student membership for WCCC students
 - a. Limit to Land Surveying students only
 - b. Offer Associate Membership to graduates free for one year

MOTION: To approve free student membership for WCCC students in the land surveying programs and Associate Membership for one year to graduates of the program. (BB/EW)
Approved unanimously

- c. Tom Sylvester will get names to Becky Roland
- 2. Approve new membership category – Corporate Sustaining Member (approval sends vote to membership)

MOTION: To approve a new membership category of Corporate Sustaining Member for land surveying companies. The details on dues and qualifications to be determined by the Board prior to sending to the membership for vote. (TS/IC)
Approved unanimously

- a. Becky Roland will develop bylaw language and procedure/pricing/ tiered pricing approach. She will send information to the Board through Survey Monkey
- 3. Approve renaming Sustaining Member to Vendor Sustaining Member

MOTION: To approve renaming Sustaining Member to Vendor Sustaining Member and clarifying qualification as suppliers to the land surveying profession. Final vote to go to membership. (TS/ST)
Approved unanimously

- 4. Approve increasing Vendor Sustaining Member dues to \$750 per year

MOTION: To approve increasing Vendor Sustaining Member dues to \$750 per year. (IC/TJ)
Approved unanimously

- 5. Board to review benefits and develop as needed prior to 2022 renewals.
- h. Outreach Committee: Dennis
 - i. ACE Mentoring Program – no report
 - ii. CSCA Exhibit – exhibit reserved
- i. Education Committee: Roland
 - i. Need a BOD Member to oversee
 - ii. NSTR
- j. RMSS Planning
 - i. John Stahl plenary speaker
 - ii. February 23-25, 2022 at Denver Marriott West (and broadcast) with online classes following week
 - iii. CFedS online broadcast
- k. Trig Star Committee: Lassner
 - i. State winner submitted national exam – no word yet
- l. CST Committee: Parker
 - i. Exam July 24 at HKS
 - ii. Northern Chapter has July exam set
- m. NSPS Delegate Report: Beers/Parker
 - i. Successful Lobby Day
 - ii. Submitted Plat contest winners from RMSS
- n. WSPS Delegates' Report: Beers/Parker
 - i. Board meeting this Saturday
 - ii. State report submitted
- o. NSPS YSN: Combs
 - i. No report
- p. QBS Update: White
 - i. NSTR
- q. Colorado County Surveyors: Joy
 - i. No report

10. Chapter Reports
 - a. Southern: Hulsey
 - i. Board meeting next week – in-person
 - b. Central: Boehm
 - i. Planning in-person meeting soon
 - ii. Ordered giveaways for Summit winners
 - iii. Golf tournament set – announcement coming
 - iv. Working on budget to submit
 - c. Northern: Berglund
 - i. Enthusiastic Happy Hour last week
 - ii. Inactive for summer
 - iii. Planning GPS on Benchmarks – July 31 with Southwestern Chapter
 - iv. Working on newsletter to mail
 - v. CST exam scheduled in July
 - c. NW ¼: Whelen
 - i. No report
 - d. Western: Bowker
 - i. WCLS met in-person at Kaart (GIS and Mapping Firm)
 - ii. July 14 – BBQ Social
 - iii. Purchasing Chromebook to assist with broadcast of meetings
 - iv. Passed on information about renewing PLSC membership
 - e. Southwestern: Johnston
 - i. SW Chapter update: Officer's meeting this Thursday (6/10).
 - ii. Hoping to have a "GPS on Benchmarks" weekend (7/31) the same weekend as the Northern Chapter. Still need to do a lot of leg work to make this happen.
 - iii. Regular meeting next Tuesday (6/15) will not take place because of the "GPS on Benchmarks" get together in July.
11. Next Meeting Date and Location
 - a. Next BOD Meeting - July 13 at 4:30PM
 - b. BOD business work group – Website videos and resources (poll for date/material)
 12. Adjourn TS/IC

Secretary Report:

Membership Roll Call:

2019

Voting: 205	Associate: 94	Sustaining: 21	Student: 4	Retired: 5	Life: 10	Total: 339
-------------	---------------	----------------	------------	------------	----------	-------------------

2020

Voting: 195	Associate: 120	Sustaining: 15	Student: 4	Retired: 4	Life: 10	Total: 348
-------------	----------------	----------------	------------	------------	----------	-------------------

2021

Voting: 185	Associate: 85	Sustaining: 16	Student: 8	Retired: 6	Life: 11	Total: 311
-------------	---------------	----------------	------------	------------	----------	-------------------

Treasurer's Report:

With the recent COVID-19 pandemic fading away in the rearview mirror and as we look toward where we are headed, we must assess how much fuel is in the tank and calculate how best to keep it going. This past year has tried us in many ways and we have overcome. We found we could operate remotely by holding trainings, meetings and conferences remotely. It all came with savings and many costs. This is where we stand today.

Membership is down, RMSS 2021 total attendance was down and costs have and are going up bringing overall operating income down with a shortage of \$30k for 2021. Needless to say, the executive officers met and we've had to drastically cut our budget for 2021. Although it has been a difficult time, we, The PLSC and Chapters will always continue to bring our best effort to represent and work for our Land Surveying community and members.

Current assets:

Checking:	\$76,563
Savings:	\$62,844
Investment Account	
(Education Fund):	\$336,924.99
	\$476,331

Past Year in Review:

Conference Revenue: Down 37%

COMM.TECH

Increasing your bottom line

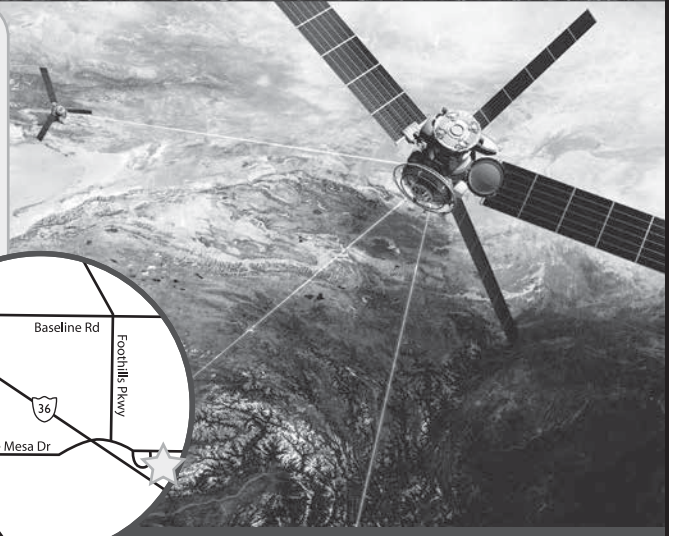
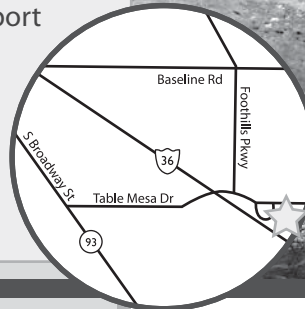
with customized drafting and design software solutions since 1994

products

- AutoCAD LT
- AutoCAD
- Map 3D
- Civil 3D
- Infrastructure Design Suites
- Infrastructure Map Server
- Raster Design
- Design Review
- Subscription

services

- State of the art training facility
- Implementation & customization
- Workflow analysis consulting
- Styles & standards set-up
- License activation support
- License compliance
- Technical support
- Pilot projects
- Transition assistance
- On-site consulting
- Government Specialist



303.530.4976 | www.ctcivil.com

5398 Manhattan Circle
Boulder, CO 80303

Autodesk®

Silver Partner
Architecture, Engineering & Construction
Authorized Government Partner

Digital Terrain Models
Digital Elevation Models
Orthometric Photos

Western
Research & Development, Ltd.

Topographic Mapping
3-D As-Builts
Contour Maps

State-of-the-art LiDAR & Digital Imaging

● High Accuracy LiDAR

Maximum rate of 200,000 KHz which translates to a point cloud as high as 150 points/m².

● High Definition Digital Images

Our Leica 39 megapixel RCD 105 Digital Camera produces images at two inches per pixel or higher.

● Real-time Decision-making

Our field & flight crews are staffed with Professional Engineers & Land Surveyors who truly understand data collection in real-time.

● Reliable Topographic Mapping

The helicopter flies at low altitudes and is capable of providing elevations at two-tenths of a foot or less.



Tel (307) 632-5656

5908 Yellowstone Rd, Cheyenne, WY

www.wrd-ltd.com

CHAPTER NEWS

NC – PLSC

As we settle into another busy summer, regular Chapter meetings have been placed on hold. However, we have remained engaged and look forward to meeting in person again soon.

In April, we hosted a presentation by Dave DiFulvio and J.C. Cundall on Subsurface Utility Engineering (ASCE 38-02/Senate Bill 18-167), the associated requirements and their relevance to us as Land Surveyors. This is an important change to the law which has affected how we collect information on utilities now and in the future.

For our final regular meeting in May we were fortunate to have the National Geodetic Survey Rocky Mountain Regional Advisor, Brian Shaw present on GPS on Benchmarks. This has generated a workday and picnic planned for July 31, 2021, in which we plan occupy benchmarks on the National Geodetic Survey's priority list, then meet for lunch and other activities. This has been planned and will be completed in conjunction with the Southwestern Chapter's efforts.

In June, we met in person for the first time since November 4, 2020. It was great to see everybody, and we look forward to more in-person meetings in the future.

Respectfully,
Dave Berglund
President
PLSC Northern Chapter

SWC – PLSC

The SWC did not hold our regular scheduled meeting on June 15th, 2021. Instead we will host a "GPS on Benchmarks" event on Saturday, July 31st, 2021. "GPS on Benchmarks" is a National Geodetic Survey (NGS) program designed to improve the National Spatial Reference System (NSRS). Data is collected on specific benchmarks with survey grade GPS units for at least four (4) hours. This data is then submitted to the NGS and is processed with other data and incorporated into the 2022 NSRS modernization. For more information here is the program website: <https://geodesy.noaa.gov/GPSonBM/>. We hope to have a safe and fun day and may hold a similar event in Fall 2021.

Our next regular meeting is scheduled for September 21st, 2021. We are uncertain if we will host a speaker or go over regular SWC business, but I will keep everyone informed as that date draws nearer.

Everyone stay safe and healthy!

Todd C. Johnston, PLS
President - SW Chapter PLSC

WCLS

The WCLS May meeting was held in person and virtual. We would like to thank Chris Ransier, PLS and Kaart for allowing us to meet in their conference room. Rich Connors did an informal introduction on Kaart and what they do as a company. Kaart is involved with GIS and mapping. Check out their web site at <https://kaart.com>.

Tom Sylvester, PE & PLS reported news that WCLS administered the Trig Star competition for Central High School this year. There were 8 participants. Congratulations to Ms. Laurel Hughes for being the Trig Star Champion of Central High School for 2021.

Mesa County Surveyor Scott Thompson, PLS is working with Mesa County Road and Bridge to raise section corners in the roadways. Please give Scott information on monuments that may need to be raised.

City of Grand Junction Surveyor Renee Parent, PE & PLS notified us that Mike Grizenko is retiring in October. I would like to personally thank Mike for his multiple years of support, planning, and executing some of our past Spring Seminars. I am currently still ironing out how we can present an online seminar this winter.

James Combs, PLS gave a summary on the Young Surveyors Network. He is the Vice President of the national group which is affiliated with NSPS. If you or someone you know is interested in further information, please feel free to contact him at jamesd.combs@gmail.com or check out their website at <https://youngsurveyors.org>.

The WCLS members voted to have a BBQ get together in July. I am looking forward to seeing everyone in person again.

Brian K. Bowker, PLS
President, WCLS Chapter PLSC



That CAD Girl
jennifer dibona
jennifer@thatcadgirl.com
www.thatcadgirl.com
(919) 417-8351

Carlson
AUTHORIZED DEALER
CERTIFIED TRAINING CENTER

Carlson Software
Sales, Support & Training

don't let cad drive you mad!

Office and field software for land surveying, civil design and construction professionals

UNDERGROUND UTILITY LOCATING



Diversified Underground is a Denver Based DBE-certified Company providing Subsurface Utility Engineering (SUE), Utility Locating, Hydro Vacuum Excavation throughout Colorado and the surrounding states.



SUBSURFACE UTILITY ENGINEERING (SUE)

Diversified Underground combines utility locating, hydro vacuum excavating and data research / management to produce an accurate map depiction of existing underground utilities.

UTILITY LOCATING

Diversified Underground offers complete utility locating services for the identification and marking of privately and publicly owned underground utilities.



Phone: (303) 636-9999 • Fax: (303) 671-8728 • www.diversifiedunderground.com



HYDROGRAPHIC SYSTEMS



303-679-8122

Info@SurveySystems.net
www.SurveySystemsInc.com

Survey Systems has the experience and capabilities to team with your Survey or Engineering Firm to provide a hydrographic/bathymetric survey.

Survey Systems (SSI) has assembled a versatile hydrographic platform that is customizable to your clients' needs. SSIs hydrographic surveying capabilities include multi & single beam sonar, stage capacity table, dredge pay quantity, hill shade model or underwater object detection and recovery.

SURVEY SYSTEMS

A Professional Surveying Company SDVOSB | SBE

National Society of Professional Surveyors (NSPS) Update

The NSPS spring meeting was held virtually in late April 2021. On 4-20-2021 & 4-21-2021, NSPS held the annual "Day on the Hill" and arranged for individual state survey societies or interested parties, to participate in a virtual meeting with the State of Colorado US House of Representatives and Senators. Over 38 states were represented. The following staff members of the Colorado Congresspersons that participated are as follows:

- Sen. John Hickenlooper D-CO
- Sen. Mike Bennet D-CO
- Rep. Diane DeGette D-CO1
- Rep. Doug Lamborn R-CO5
- Rep. Jason Crow D-CO6
- Rep. Ken Buck R-CO4

Several PLSC members participated in the discussion with staff members and included:

- Todd Beers (NSPS Colorado Director)
- Ralph Pettit (PLSC President)
- Becky Roland (PLSC Executive Director)
- Shaun Lee (PLSC Secretary/Treasurer)
- Steve Parker (PLSC Immediate Past President)
- Eric White (PLSC Southern Chapter Director)

The emphasis of the discussion with the senator and representative staff focused on the upcoming infrastructure bill that was under discussion at the time. The push was to have the congress representatives insert the phrase "surveying and mapping professionals" in any projects that would be funded or come under the infrastructure bill. The proposed language was provided to the staffers to pass along to their specific congress members. During the discussions, it was quickly apparent that most of the staffers did not have knowledge of who land surveyors are and what they do. The PLSC group spent some time with each office staffer to fill them in on what we do as a profession and offered site/tour visits to the various companies to educate the respective representatives and senators.

There were also numerous committee meetings that were held virtually, and I would encourage all interested individuals to visit the NSPS website to review the minutes of the variety of meetings. One very active committee is the Government Affairs Committee that highlights what the NSPS and its federal lobbyist John "JB" Byrd, who has done an excellent job enlightening

Congress on the land surveying profession.

The long time NSPS Executive Director Curt Sumner is nearing retirement and the NSPS executive committee is working closely with Curt to identify the process and potential selection of Curt's successor.

The schedule and venue for the NSPS Fall Meeting will be September 23-25, 2021, in Oak Brook, IL and, at this point in time, will be held in person. Arrangements may be made to call into committee meetings for those directors unable to attend or other interested parties.

The next NSPS Spring Meeting that will include "Day on the Hill", is scheduled for March 29 through April 2, 2022 in Arlington, VA.

Several Certified Survey Technician (CST) examinations have been held in various locations around Colorado recently. This past year we have noted an increase in the desire to become a CST and several surveyors have volunteered their time and/or facilities to proctor the exams. If Please contact Becky Roland and/or a PLSC board member to inquire about scheduling a CST exam.

The PLSC has updated the NSPS list of schools providing land surveying certificates or degrees in Colorado.

Respectively submitted,

Todd G. Beers, PLS
Colorado NSPS Director

Western Federation of Professional Surveyors (WFPS) Update

On June 12, 2021 WFPS held a meeting virtually. The majority of states were present for the meeting. An official “highlights” of the meeting will be provided at a later time and submitted to SideShots for publication.

The next meeting will be held in October 16, 2021, in Phoenix, AZ and will be an in person meeting (first one in over a year), and will hopefully allow call in capability. The meeting will be in conjunction with the Arizona Professional Land Surveyors (APLS) Fall Forum where Jeff Lucas, PLS will be a speaker on October 15, 2021.

A multi-state surveying conference that includes WFPS, Arizona, California, Nevada and Utah will be held March 30 through April 2, 2022 at the Luxor Hotel in Las Vegas, NV.

In March 2021, there was a “Seven States” virtual conference (Alaska, Arizona, California, Montana, Nevada, New Mexico & Washington) and most of the presentations were successfully recorded and are available for sale through the WFPS website.

A comic book is being developed by the Nevada society of surveyors to promote surveying as an outreach document. The cost will be around \$11 each and will hopefully be available by the October 2021 WFPS meeting. The WFPS is looking into ways to outreach to the military to bring former military personnel into the surveying profession.

WFPS is reaching out to its state members to provide any materials pertaining to outreach for use by other states and will set up a Google Drive to accommodate the compilation of the documents.

New candidates for the various WFPS officer positions were nominated and approved and will be installed at the October 2021 meeting. The new slate of candidates are as follows:

- Ben Petersen, Chair
- Russ Kluesner, Chair-Elect
- Trent Keenan, Secretary/Treasurer
- Mike Nadeau, Immediate Past Chair

WFPS has surveying scholarships available. Please visit the WFPs website for application form.

Discussion on the Alliance for Responsible Professional Licensing (ARPL) group and their role and cost for sponsorship (\$25,000/year) and voting membership (\$50,000/year). NSPS has been consulted and communications between WFPS and NSPS has been ongoing. NSPS consensus is that since NCEES is part of the voting membership and land surveying is mentioned by NCEES, that the surveying profession is covered. NSPS will be keeping an eye on the group.

WFPS was in the process of sponsoring the development a LSIT preparation video. They are looking for a person or group of people to spearhead the effort.

Respectfully Submitted,

Todd G. Beers, PLS
Colorado WFPS Director

S U S T A I N I N G M E M B E R S

AIRWORKS

Nadine Natividad
226 Causeway St., #102
Boston, MA 02114
nadine@airworks.io

ASSURANCE RISK MANAGERS, INC.

Lisa Isom
10651 E. Bethany Drive, Suite 300
Aurora, CO 80014
303-454-9562
lisom@arm-i.com

ALTURA LAND CONSULTANTS, LLC

Jesus Lugo
6950 S Tucson Way Unic C
Centennial, CO 80112
720-488-1303
marissa@alturaland.com

CARLSON SOFTWARE

Jim Reinbold
Regional Sales Director
1412 W Powder Ct.
Eagle, ID 83616
303-482-1836
jreinbold@carlsonsw.com

DIVERSIFIED UNDERGROUND INC.

Richard Chuapoco
2851 S. County Rd. 137
Bennett, CO 80102
720-490-1321
richard@diversifiedunderground.com

ECAD

Kelly Marrill
12130 N. Pennsylvania St.
Thornton, CO 80241
303-427-2231
Kmarill@cad-1.com

FLATIRONS SURVEYING, INC.

Ed Bristow
3825 Iris Ave., Ste. 395
Boulder, CO 80301
303-443-7001
ebristow@flatironsinc.com

FRONTIER PRECISION INC.

Mel Philbrook
5480 W 60th Ave., Unit A
Arvada, CO 80003
720-214-3500
mel@frontierprecision.com

GEOSHACK

Thad King
7000 E 47th Ave., Ste. 900
Denver, CO 80216
303-853-0311
tking@geoshack.com

HARRIS KOCHER SMITH

Shawn Clarke
1120 Lincoln St., Ste. 1000
Denver, CO 80203
303-623-6300
sclarke@hkseng.com

HIXON MFG. & SUPPLY CO.

Ken Perry
1001 Smithfield Dr.
Fort Collins, CO 80524
303-694-0012
ken@hixonmfg.com

JACOBS

Robert Boehm,
9191 S Jamaica St
Englewood CO 80112
720.286.2914
robert.boehm@jacobs.com

MERRICK & COMPANY

Todd Beers
Survey Project Manager
5970 Greenwood Plaza Blvd.
Greenwood Village, CO 80111
303-751-0741
todd.beers@merrick.com

NV5, INC.

Eric White
5445 Mark Dabbling Blvd., Ste. 100
Colorado Springs, CO 80918
719-268-8535

PEAK LAND CONSULTANTS INC.

Robert Wood
526 Honeysuckle Dr.
New Castle, CO 81647
970-930-5700
bmwood4466@gmail.com

SKLD INFORMATION SERVICES

Kelly Mulé
Sales Representative
9540 East Jewell Ave
Suite A
Denver, CO 80247
(303)695-3850
kmule@skld.com

SURVEYING AND MAPPING, LLC (SAM)

Mark Hall
555 Zang Street #210
Lakewood CO 80228
303-988-5852
Mark.hall@sam.biz

SYNERGY MAPPING, INC.

Kent Travis
6551 S Revere Pkwy., Ste. 235
Centennial, CO 80111
303-478-3866
tgkent@synergymapping.com

TERRAMETRA RESOURCES

Lynn Patten
2919 Bryn Mawr Place
Longmont, CO 80503
303-709-2903
lynn.r.patten@gmail.com

TOM RICHARDSON LLC

41255 Dublin Dr.
Parker, CO 80138
303-699-3524
Gwen@TomRichardsonLLC.com

TOPOGRAPHIC LAND SURVEYORS

S. Erik Dumas
12265 W Bayaud Ave., Ste. 130
Lakewood, CO 80228
303-989-1461
erik.dumas@topographic.com

UNDERGROUND CONSULTING SOLUTIONS

Kelly Goff
2701 W. Oxford Ave., Suite 6
Englewood, CO 80110
303-904-7422
ucs@totalspeed.net

VECTORS, INC

Chuck Hutchins
Sales
10670 E Bethany Dr.
Bldg. 4
Aurora, CO 80014
303-283-0343
chuckh@vectorsinc.com

WESTWOOD PROFESSIONAL SVCS.

Ty Trammell
4514 County Road 5
Erie, CO 80516
806-678-5540
ty44trammell@yahoo.com

These firms support our organization. Please show them your appreciation with your patronage. To become a Sustaining Member, please contact Becky Roland at broland@plsc.net, or 303-551-3266.

SURV-KAP[®]

No Boundaries On Customer Service

We manufacture a full line of brass survey markers for all of your surveying needs.



MONUMENTS, MARKERS, CAPS & ACCESSORIES

ORDER NOW: 800-445-5320 • SURV-KAP.COM

Custom Survey Markers & Monuments • Signs & Witness Posts • Flagging & Targets • Nails & Washers

Survey Marker

Custom Survey Markers & Monuments • Signs & Witness Posts • Flagging & Targets • Nails & Washers



Berntsen[®]
Marking the Infrastructure of the World[™]

877-686-8561 | www.berntsen.com/colorado

Frontier Precision helps you re-imagine what's possible. Welcome to the Trimble R12i GNSS System. Its Trimble ProPoint™ RTK positioning engine and Trimble TIP™ tilt compensation technology allows you to measure or stake out points faster and in more places, without ever having to level the survey pole. Even on sites that were once inaccessible — like the edge of an open excavation or around building corners. Make the move to being even more productive. To get started, visit: www.frontierprecision.com/trimble-r12i.



**THE WORKSITE IS RARELY ON YOUR SIDE.
THE FIELD IS NOW TILTED IN YOUR FAVOR.**

Want more information? Contact:

Jason Dysthe, Geospatial Sales Representative
jasond@frontierprecision.com
720.214.3500 or 800.652.1522 [Toll Free]



Frontier Precision
5480 West 60th Avenue
Unit A
Arvada, CO 80003

