

February 2021

# SIDE SHOTS

Professional Land Surveyors of Colorado

Volume 52, Issue 1

## KEYNOTE SPEAKER

GARY KENT  
PLS



## FEATURED SPEAKERS



STEVE PARRISH  
PLS, CFEDS



JAN VAN SICKLE  
PHD, PLS



Jenna Conover



Michael Dennis  
PhD, PE, RLS



Bob Green  
PLS



Dustin Hoaglin  
PLS



Tasha Huhta



John Hunter  
PLS



Melissa Jakubiak



Adam Kersnowski



Kathryn Lyon



Ken Martinez



Kelly Miller  
PLS



David Morczinek



Sean Mullen, PLS



Teresa Smithson  
PLS, GISP



Nathan Stephenson



Glen Stice



Joyce Young

## ROCKY MOUNTAIN SURVEYORS SUMMIT

February 22-26, 2021–Virtual Conference • February 24-26, 2021–Denver Marriott West

Prst std  
U.S. Postage  
PAID  
Denver, CO  
Permit No. 1222

Becky Roland  
Executive Director  
PLSC, Inc  
PO Box 441069  
Aurora, CO 80044





# HIXON

Mfg. & Supply Co.

[www.hixonmfg.com](http://www.hixonmfg.com)

**SALES - SERVICE - RENTAL**

**TWO CONVENIENT RETAIL LOCATIONS**

**SURVEY, CONSTRUCTION, AND ENGINEERING  
INSTRUMENTS AND SUPPLIES**

**LARGEST GNSS RTK REFERENCE  
NETWORK IN COLORADO AND WYOMING**

**LOCAL SUPPORT, TRAINING, AND SERVICE**

**24/7 WEB STORE - [www.hixonmfg.com](http://www.hixonmfg.com)**

**Achieve Survey-Grade Results Using the Phantom 4 RTK  
with SDK Remote Controller**



**DJI Matrice  
210 RTK v2.0**

**Built to  
Endure.  
Engineered  
to Adapt.**



**FORT COLLINS**

1001 SMITHFIELD DR  
FORT COLLINS, CO 80524  
970.482.0111 800.762.5252

[www.hixonmfg.com](http://www.hixonmfg.com)



**DENVER**

8775 E ORCHARD RD, #807  
GREENWOOD VILLAGE, CO 80111  
303.694.0012 800.475.3422



**PROFESSIONAL LAND SURVEYORS  
OF COLORADO, INC.**

AFFILIATE—NATIONAL SOCIETY OF  
PROFESSIONAL SURVEYORS  
MEMBER—COLORADO ENGINEERING COUNCIL  
MEMBER—WESTERN FEDERATION OF  
PROFESSIONAL SURVEYORS

**OFFICERS (2020)**

**STEVE PARKER**  
*President*  
land\_surveyist@hotmail.com  
O: 719-590-9194

**DON HULSEY**  
*Vice President*  
don@csamlc.com  
M: 719-209-2029

**SHAUN LEE**  
*Secretary/Treasurer*  
sdl051@yahoo.com  
O: 570-499-8073

**BECKY ROLAND**  
*Executive Director*  
PO Box 441069, Aurora, CO 80044 • broland@plsc.net  
Phoenix AMC O: (303) 551-3266 F: (720) 230-4846

**2020 PLSC CHAPTER  
ORGANIZATION**

**CENTRAL COLORADO PROFESSIONAL SURVEYORS**

**President, Robert Boehm**  
Vice President, Derek Brown; Secretary, Cole Conger  
Treasurer, Daniel Davis  
Directors: Devon Arnold, Dane Courville, Jeff MacKenna,  
Laura Minch, Tony Peall, Brian Socia

**NORTHERN CHAPTER - PLSC, INC.**

**President: Dave Berglund**  
President-elect: Laine Landau; Secretary/Treasurer, Heather Lassner  
Directors: Michael DeDecker, Ron Perkins,  
Reade Roselles, Steve Varriano

**NORTHWEST 1/4 COLORADO  
LAND SURVEYORS**

**President: Brian T. Kelly**  
Vice President, William Whelan; Secretary/Treasurer, Jeff Gustafson  
Directors: Thomas H. Effinger, Skidge Moon, Walter Magill,  
Lloyd Powers, Peter Epp  
President Emeritus: Gordon Dowling

**SOUTHERN COLORADO PROFESSIONAL  
LAND SURVEYORS**

**President: Don R. Hulsey**  
Vice President: Mark Johannes; Secretary: Steve Parker  
Treasurer: Dan Hanten  
Directors: Jon Tessin, Steve Rutzen, Eric White,  
Joseph Alessi, III, Kenneth Gould, Jr., Dennis Craig, Spencer Barron  
President Emeritus: Steve Parker  
Honorable Lifetime: Nathan Lira, PLS

**SOUTHWESTERN CHAPTER - PLSC, INC.**

**President: Todd Johnson**  
Vice President: Josh Casselberry  
Secretary /Treasurer: Dave Seiler

**WESTERN COLORADO LAND SURVEYORS**

**President: Brian Bowker**  
Vice President: Chris Ransier; Secretary-Treasurer: Alex Lheritier  
Directors: Scott Thompson, Peter Krick, Tom Sylvester  
Sean Mullen, Kurt Shepherd, Alec Thomas, Ted Juntilla

# SIDE SHOTS

**FEBRUARY JOURNAL 2021**

**VOLUME 52**

**NUMBER 1**

■ President's Letter .....	4
■ From the Editor .....	5
■ PLSC Refresher Course .....	7
■ Rocky Mountain Surveyors Summit.....	8
■ Bureau of Land Management Letter .....	10
■ You Make the Call Episode 2 .....	13
■ Paint the Breeze .....	16
■ WFPS Highlights.....	18
■ PLSC Board of Directors Meeting Minutes .....	20
■ PLSC Treasurer's Report.....	22
■ Chapter News .....	24
■ Sustaining Members .....	26

*Side Shots is the official publication of the Professional Land Surveyors of Colorado, Inc.  
and is published quarterly for the betterment of the surveying profession.*

**Steve Parker**  
*President*

**Don Hulsey**  
*Vice President*

*For Editorial Correspondence, contact:*

**Becky Roland**

*Interim Editor: Side Shots*  
PO Box 441069, Aurora, CO 80044  
303-551-3266 • broland@plsc.net

*This publication is not copyrighted and articles may be reprinted with due credit.  
Statements made and opinions expressed are from the contributors and do not necessarily  
express the official views of the Professional Land Surveyors of Colorado, Inc.*

**Deadlines for editorials, articles, pictures and advertising are January 1, April 1,  
July 1 and October 1. All material received after the current deadline will appear  
in the next issue of Side Shots.**

*We would like to invite anyone who is interested to advertise in Side Shots.  
Do you have something you want to sell, trade or buy? Why not use Side Shots for your  
next ad? We can also reproduce business cards for advertising. Ad space reservation must be arranged  
with Becky Roland, PO Box 441069, Aurora, CO 80044; 303-551-3266.  
(Deadlines: January 1, April 1, July 1 and October 1).*

**Current Advertising Rates:**

*Business card size or less - Member \$25.00; Non-member \$30.00  
One-Half Page - Member \$115.00; Non-member \$150.00  
Full Page - Member \$225.00; Non-member \$300.00  
Color advertisements — add 33 percent*





## PROFESSIONAL LAND SURVEYORS OF COLORADO, INC.

PO Box 441069, Aurora, CO 80044

AFFILIATE – NATIONAL SOCIETY OF PROFESSIONAL SURVEYORS  
MEMBER- WESTERN FEDERATION OF PROFESSIONAL SURVEYORS

### OFFICERS (2019-2020)

DON HULSEY  
VICE PRESIDENT  
M: (720) 209-2029  
don@csamllc.com

TODD BEERS  
PAST PRESIDENT  
O: (303) 353-3528  
todd.beers@merrick.com

STEVE PARKER  
PRESIDENT  
O: (719-641-3355)  
president@plsc.net

BECKY ROLAND  
EXECUTIVE DIRECTOR  
O: (303) 551-3266  
broland@plsc.net

SHAUN LEE  
SECRETARY-  
TREASURER  
O: (570) 499-8073  
sdl051@yahoo.com

### DIRECTORS (2017-2020)

BRIAN DENNIS  
O: (719) 337-1262

LEIF JOY  
O: (970) 878-5292

TOM SYLVESTER  
O: (970) 255-7386

MIKE GREER  
O: (303) 271-8787

### DIRECTORS (2019-2022)

ERIC CARSON  
O: (303) 980-9104

SCOTT THOMPSON  
O: (970) 244-1821

ERIC WHITE  
O: (719) 268-8500

HEATHER LASSNER  
O: (970) 310-4089

### WFPS DELEGATES (2019-2020)

ROGER NELSON  
O: (720) 587-2657

TODD BEERS  
(O): 303-353-3528

### NSPS DIRECTOR (2019-2020)

TODD BEERS  
(O): 303-353-3528

Our 11th Annual Rocky Mountain Surveyors Summit is right around the corner, and we have a full deck with well-known professionals like Gary Kent, PLS; Jan Van Sickle, PhD, PLS; and Steve Parrish, PLS, CFedS. The Conference this year will be something we have never done before: a hybrid, in-person, and online meeting. This year the conference will run longer than previous events beginning on February 22nd and ending on February 26th. For this reason, we are expecting more participation than ever before.



New Year's Day represents the end of an era. John B. Guyton (JB), PLS, passed away. We have planned a memorial edition of *Side Shots* for May. He was a great land surveyor, and he will genuinely be missed. JB served as a two-term PLSC president, National Society of Professional Surveyors state representative, Western Federation of Professional Surveyor delegate, and editor of *Side Shots* for the last 14+ years. He was presented with a PLSC Lifetime Achievement Award last year, which was also named in his honor, and he will be greatly missed.

The future of *Side Shots* will fall to an editing committee selected by the PLSC Board of Directors. One of our Directors will chair this committee; however, this person will be looking for not only new high quality-contributors and advertisers, but also assistant editors to cover all segments of our publication. If you are interested in contributing or getting involved, this is your opportunity. Contact Becky Roland to plug in.

I want to give a special thanks to Chris Power, who served alongside JB Guyton as assistant editor and served as editor when JB's health prohibited his ability to work on the magazine. His hard work and dedication are a credit to him and to Flatirons, Inc., who supported JB and Chris and this publication for so many years. You did an amazing job, Chris and JB, and have my special thanks.

I also want to thank Gaby Neunzert, PLS. His contributions over the years have been numerous and of the highest caliber. His articles were often humorous, interesting, curious, academic, but always edifying and informative. *Side Shots* will continue to grow and keep our fellow professionals informed and entertained if for no other reason than Gaby told me to keep it going, or else.

My term as PLSC president ends in February, and I have to say it has been interesting and challenging considering a global pandemic throwing a wrench in all that was normal. It has been my honor to serve, and I have every intention to continue to serve and represent the PLSC in the future. I know that the future of our professional society is in good hands.

All the best,

Steven Parker, PLS CFM CFedS  
PLSC President [president@plsc.net](mailto:president@plsc.net)



Usually, we see JB Guyton or Chris Power writing this letter. As you know, JB Guyton passed the baton to Chris Power, and Chris stepped down after years of service to JB and to *Side Shots* immediately after JB's passing, so this issue of *Side Shots* was completed without an Editor.

The *Side Shots* publication is one of the top state survey association magazines, and PLSC's Board of Directors will be honoring the publication through thoughtful reorganization of editorial support. If you are interested in serving on a team to produce each quarterly issue, please contact Becky Roland at [broland@plsc.net](mailto:broland@plsc.net) or 303-551-3266.

As to this issue, it is complete with information on the 2021 Rocky Mountain Surveyors Summit (RMSS). This year's Summit will be an event PLSC has never done before – an in-person conference with various online presentations. The RMSS Planning Committee has been working hard to bring each of you a program filled with timely information and national speakers.

This issue also includes submissions from two of our regular contributors – Dean Glorso and Earl Henderson. PLSC is lucky to have these two professionals in our organization, and we appreciate the time they take to keep us all up-to-date and entertained.

*Side Shots* would not be complete without the reports from PLSC Chapters, CFPS, BLM and its Board of Directors. Be sure to review this information to see what we have been working on and for upcoming local events.

If you have contributions for future issues, please send them to us!

We appreciate all of the volunteer hours that are put in to make PLSC and *Side Shots* valuable to the profession.

– The PLSC Board of Directors

COMM.TECH

# Increasing your bottom line

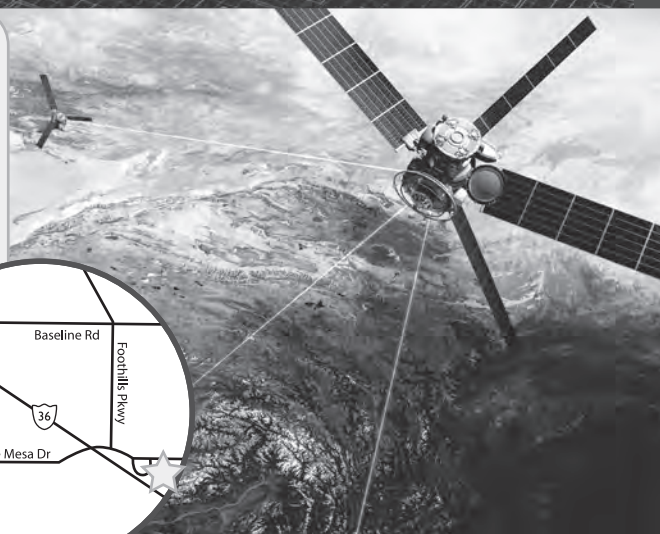
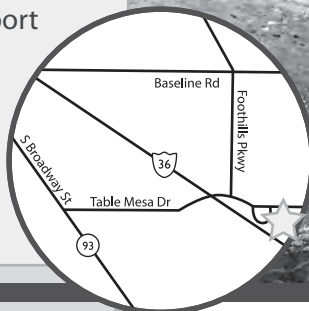
with customized drafting and design software solutions since 1994

## products

- AutoCAD LT
- AutoCAD
- Map 3D
- Civil 3D
- Infrastructure Design Suites
- Infrastructure Map Server
- Raster Design
- Design Review
- Subscription

## services

- State of the art training facility
- Implementation & customization
- Workflow analysis consulting
- Styles & standards set-up
- License activation support
- License compliance
- Technical support
- Pilot projects
- Transition assistance
- On-site consulting
- Government Specialist



303.530.4976 | [www.ctcivil.com](http://www.ctcivil.com)

5398 Manhattan Circle  
Boulder, CO 80303

**Autodesk®**

Silver Partner  
Architecture, Engineering & Construction  
Authorized Government Partner

Digital Terrain Models  
Digital Elevation Models  
Orthometric Photos

*Western*  
Research & Development, Ltd.

Topographic Mapping  
3-D As-Builts  
Contour Maps

## State-of-the-art LiDAR & Digital Imaging

### • High Accuracy LiDAR

Maximum rate of 200,000 KHz which translates to a point cloud as high as 150 points/m<sup>2</sup>.

### • Real-time Decision-making

Our field & flight crews are staffed with Professional Engineers & Land Surveyors who truly understand data collection in real-time.

### • High Definition Digital Images

Our Leica 39 megapixel RCD 105 Digital Camera produces images at two inches per pixel or higher.

### • Reliable Topographic Mapping

The helicopter flies at low altitudes and is capable of providing elevations at two-tenths of a foot or less.



Tel (307) 632-5656

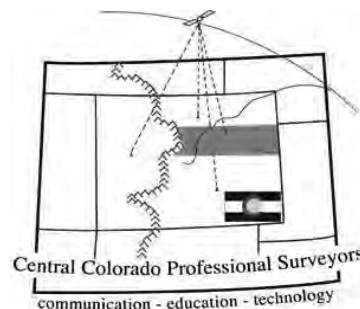
5908 Yellowstone Rd, Cheyenne, WY

[www.wrd-ltd.com](http://www.wrd-ltd.com)



## Land Surveying Refresher Course January 6 to March 17, 2021

Offered by the Professional Lands Surveyors of  
Colorado, Inc., and the Central Colorado  
Professional Surveyors



This course offers a review and self-study plan for those taking the National Council of Examiners for Engineering and Surveying (NCEES) Fundamentals of Surveying (FS) and Principles and Practice of Surveying (PS) examinations. The course is designed to aid candidates in developing and expanding exam-taking proficiencies. The **Wednesday** evening classes will be 3 hours in length, starting promptly at 6:00 PM. Look for information about the online class at <http://www.plsc.net/>

### Fundamentals

- 1 Jan. 6 Overview of NCEES FS and PS Exams
- 2 Jan. 13 Survey Computations I
- 3 Jan. 20 Survey Computations II
- 4 Jan. 27 GIS, State Plane, Geodesy
- 5 Feb. 3 Boundary Law and Legal Terms

### Principles and Practice

- 6 Feb. 10 Public Land Survey System
- 7 Feb. 17 Colorado Survey Law I
- Feb. 24-26 Rocky Mountain Survey Summit**
- 8 Mar. 3 Colorado Survey Law II
- 9 Mar. 10 Professional Ethics

10 March 17 Mock PS and FS Examination

Featured Speakers: Alan Blair, Scott Thompson-Buchanan, Sean Mullen, Roger Nelson, Lynn Patten, Dr. Jan Van Sickle and Tom Sylvester

The fee for the entire course is \$450 or \$75 per individual class. Registration is open beginning November 1, 2020. See <http://www.plsc.net/> for registration and online information. Classes will be held in one of the conference rooms at the Jefferson County Courts and Administration Building (Taj Mahal), 100 Jefferson County Parkway, Golden, CO. Online classes will be broadcast each night, and recordings will be available 1-2 weeks after each class. If attending in person, use the parking lot and main door on the east side of the building. Signage will lead you to the classroom. For questions, contact Becky Roland, Executive Director, PLSC, 303-551-3266, [broland@plsc.net](mailto:broland@plsc.net). Visit the NCEES site at <http://ncees.org/exams/> to learn more about the FS and PS examinations.





## 2021 Rocky Mountain Surveyors Summit Live In-Person Conference & Virtual Conference

### Headline Speaker:

Gary Kent, PLS



presenting on:

### *The Art of Retracement & Surveyor's Judicial Role*

### Featured Speaker:

Jan Van Sickle, PhD, PLS



presenting on:

*Error Analysis & Statistics,  
Coordinates & Geodesy, GPS  
Modernization & GNSS*

### Featured Speaker:

Steve Parrish, PLS, CFedS



presenting the:

*CFedS Course: Reparation Cases &  
Protractions, Area Relationships &  
Parenthetical Distances  
with Sean Mullen, PLS and  
Tasha Huhta*

The 2021 Rocky Mountain Surveyors Summit will be presented with limited in-person seating for presentations by Gary Kent, PLS. All presentations will be broadcast online with recordings available for one month after the Summit for registrants only.

### Thank you to our Gold Sponsors:



COMPLETE INFORMATION IS AVAILABLE AT [ROCKYMOUNTAINSUMMIT.NET](http://ROCKYMOUNTAINSUMMIT.NET)



# Program

- **FEBRUARY 22, 2021**
  - **9AM-11AM**
    - **AES DORA Board Activities (Part 1)** - Kelly Miller, PLS & Joyce Young
    - **Accuracy, Error Analysis, and Statistics** - Jan Van Sickle, PhD, PLS
    - **UAS and Mobile Data - The Ground Control Dilemma** - Bob Green, PLS & Nathan Stephenson
  - **11:30AM-12:30PM PLSC Annual Board Meeting**
  - **1PM-3PM**
    - **AES DORA Board Activities (Part 2)** - Kelly Miller, PLS and Joyce Young
    - **Coordinates and Geodesy** - Jan Van Sickle, PhD, PLS
    - **Aerial Mapping Best Practices: Achieving Accuracy and Efficiency with Artificial Intelligence** - Adam Kersnowski, Melissa Jakubiak, PLS & David Morczinek
- **FEBRUARY 23, 2021**
  - **9AM-11AM**
    - **Where the Rubber Hits the Road - Trimble Business Center - Point Cloud Workflow** - Dustin Hoaglin, PLS & Glen Stice
    - **GPS Modernization and GNSS** - Jan Van Sickle, PhD, PLS
    - **Building and Editing Surface Models in Civil 3D** - Ken Martinez
  - **11:30AM-12:30PM PLSC Chapter Summit**
  - **11:30AM-12:30PM NSPS Young Surveyors Meeting**
  - **1PM-3PM**
    - **CDOT's Role in Transportation Projects and Right of Way** - Kathryn Lyon
    - **LiDAR, IMU and GNSS in Mobile Mapping** - Jan Van Sickle, PhD, PLS
    - **QuickBooks for Small Businesses** - Jenna Conover
- **FEBRUARY 24, 2021**
  - **8AM-5PM**
    - **Art of Retracement** - Gary Kent, PLS (Limited In-Person Seating and Live Broadcast)
  - **9AM-11AM**
    - **Brave New Datum and Coordinates After 2022** - Michael Dennis, PhD, RLS, PE
    - **GIS for Beginners: It's NOT a Map!** - Teresa Smithson, PLS, GISP
  - **11:30AM-12:30PM Awards, Plat Competition, Photo Competition**
  - **1PM-3PM**
    - **Dissecting the Colorado State Plane Coordinate System of 2022** - John Hunter, PLS
    - **GIS for Surveyors - How to Use Free GIS Data in your Mapping** - Teresa Smithson, PLS, GISP
- **FEBRUARY 25, 2021**
  - **8AM-5PM**
    - **Surveyor's Judicial Role** - Gary Kent, PLS (Limited In-Person Seating and Live Broadcast)
- **FEBRUARY 26, 2021**
  - **8AM-12PM**
    - **Riparian Cases** - Sean Mullen, PLS (Live Broadcast Only)
  - **1PM-5PM**
    - **Protractions, Area Relationships, & Parenthetical Distances** - Tasha Huhta & Steve Parrish, PLS, CFedS(Live Broadcast Only)



United States Department of the Interior  
BUREAU OF LAND MANAGEMENT  
Colorado State Office  
2850 Youngfield Street  
Lakewood, Colorado 80215-7210  
www.co.blm.gov



CO-956  
9650

December 18, 2020

Mr. Chris Power, Editor  
Side Shots  
3825 Iris Ave.  
Boulder, Colorado 80301

Dear Mr. Power:

This letter informs you of official BLM cadastral surveys in Colorado that have been accepted from August 21, 2017, through October 16, 2020, officially filed, and are now available in the Public Room, Bureau of Land Management, Colorado State Office, 2850 Youngfield Street, Lakewood, Colorado 80215. The surveys will also be available at <https://glorerecords.blm.gov>.

The accepted surveys are listed below by township, range, meridian, group number, type, approval date and number of plats.

<u>Township</u>	<u>Range</u>	<u>Meridian</u>	<u>Group No.</u>	<u>Type</u>	<u>Approved</u>	<u>Plats</u>
T. 41 N.	R. 7 W.	NMPM	1671	APD	08/21/17	1
T. 43 N.	R. 12 E.	NMPM	1706	Plat Only	08/25/20	3
T. 49 N.	R. 8 E.	NMPM	1712	Plat Only	10/01/20	3
T. 46 N.	R. 9 E.	NMPM	1724	Plat Only	10/16/20	2

As other surveys are completed, I will advise you of their acceptance. You may circulate this letter among the membership of the Professional Land Surveyors of Colorado.

Sincerely yours,

Randy Bloom  
Chief Cadastral Surveyor for Colorado

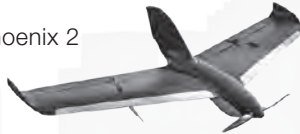


**TOPCON**

**LOCKHEED MARTIN**  
We never forget who we're working for™

**sentera** **dji**

Phoenix 2



Inspire 1 & 2



Omni



Phantom 4 Pro



Indago Mapper



RL-H4C



ES Total Station



FC-5000



HiPer HR



GT Robot



RL-SV2S



## ***We Have Everything You Need!***

If you're looking for great deals on equipment then call our experts or stop by one of our many locations and see for yourself what products and services GeoShack has to offer. We have everything you need to get the job done accurately and right the first time.

Don't forget to ask us about our **GeoShack Advantage** programs – where you can get support, training, and other services along with your equipment purchase.

### **GeoShack Denver**

5385 Quebec Street  
Commerce City CO 80022

### **For more info call**

**(303) 853-0311**



For More Information Visit Us At: [www.GeoShack.com](http://www.GeoShack.com)

©2017 GeoShack. All Rights Reserved.

7.31\_GS\_AOLS\_Ad\_Denver



**Dreaming of incorporating UAS into your business?**

**Wanting to get FAA Remote Pilot Certified?**

**Let the FAAS team help you build YOUR professional UAS team.**

This UAS Certification Training course gives you the tools you need to pass your FAA Remote Pilot written exam. This one-day course will cover the key main elements of the 107 exam and provides you with additional at home study materials, including Air Craft's proprietary study guide, FAA manuals, practice exams, log book, and even flight exercises.

**What you get:**

- Eight hours ground school
- Proprietary study guide saves study time.
- Practice Exams
- All FAA Exam Study Materials
- Flight Exercises
- Bonus flying techniques

**Our Instructors:**

FAA Certified (Commercial & UAS)  
FAA Safety Team Representatives  
Hundreds of hours of real – world  
UAS flight operation experience.

**Join us for our next UAS  
Certification Class in Denver  
Saturday, May 19<sup>th</sup>  
Email [bryan@air-craft.us](mailto:bryan@air-craft.us) for  
more info or to register.**

## UNDERGROUND UTILITY LOCATING



**Diversified Underground** is a Denver Based DBE-certified Company providing Subsurface Utility Engineering (SUE), Utility Locating, Hydro Vacuum Excavation throughout Colorado and the surrounding states.



### SUBSURFACE UTILITY ENGINEERING (SUE)

Diversified Underground combines utility locating, hydro vacuum excavating and data research / management to produce an accurate map depiction of existing underground utilities.

### UTILITY LOCATING

Diversified Underground offers complete utility locating services for the identification and marking of privately and publicly owned underground utilities.



**Phone: (303) 636-9999 • Fax: (303) 671-8728 • [www.diversifiedunderground.com](http://www.diversifiedunderground.com)**



# You Make the Call

## Episode 2-Center of Section

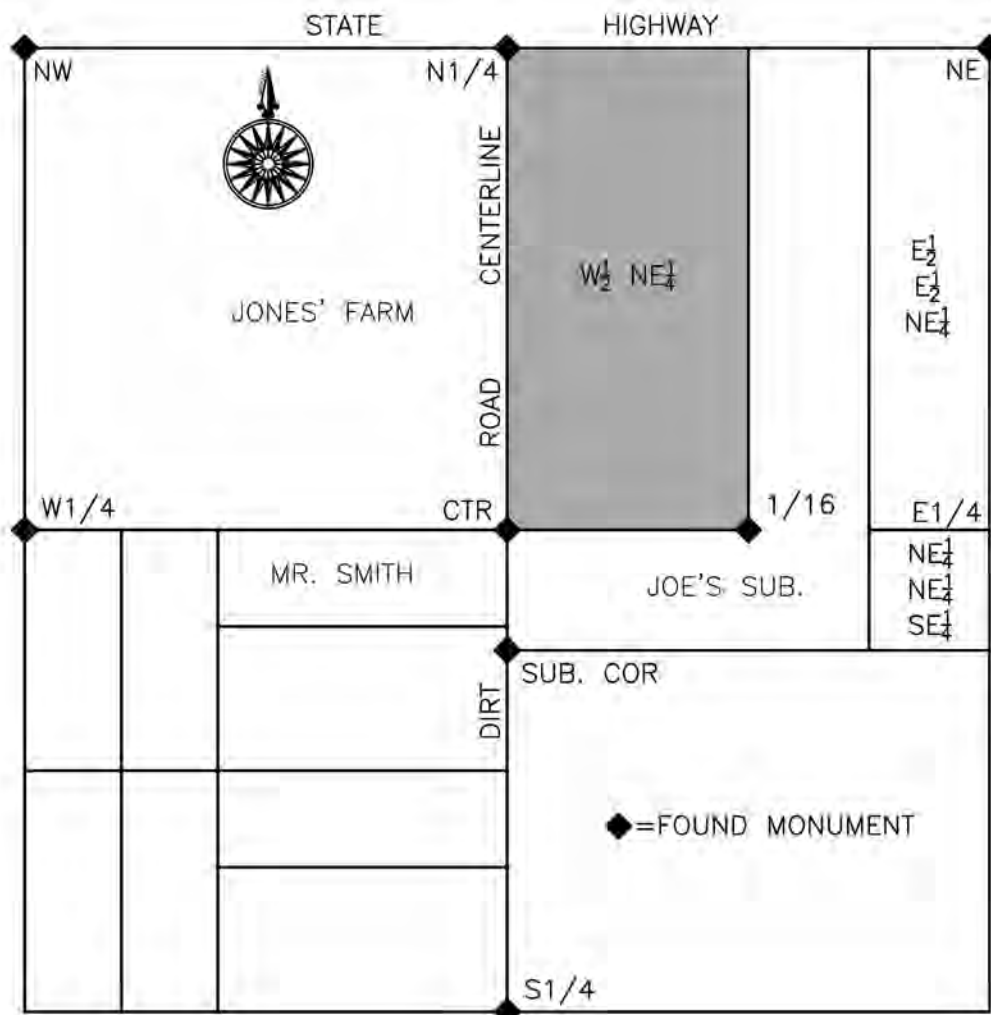
By Earl Henderson, PLS

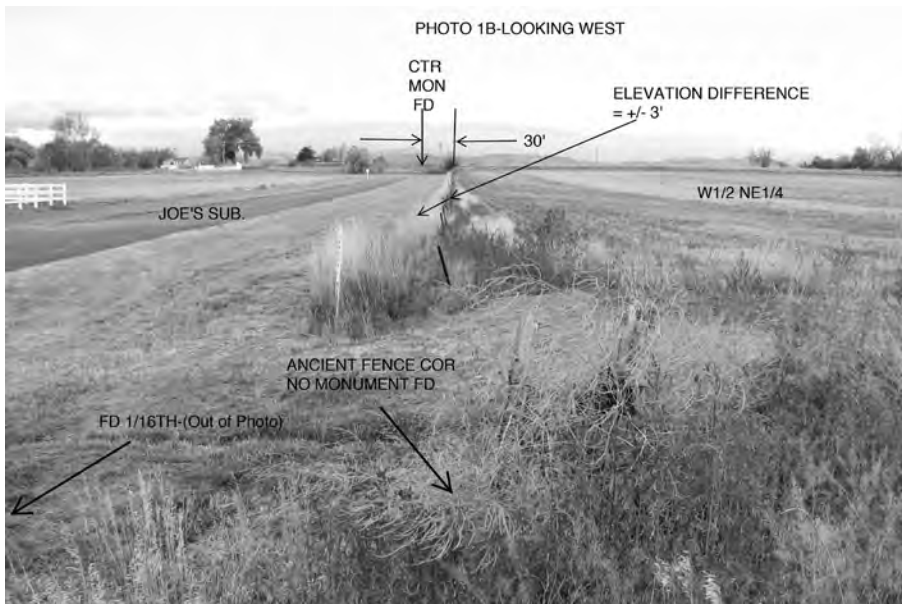
This situation is about the Center of Section, so we're about to have some fun. Don't forget, your mission, should you decide to accept it, is to defend your position in front of a judge. So make sure you have the back up. As always, the names have been changed to protect the innocent...and the guilty. I'll let you decide which is which.

Your subject property is the W1/2 of the NE1/4 of a standard section, shown as shaded in Figure 1. Your research includes a few modern surveys and the most recent monument records on the PLSS monuments for the section. The monument records cover all the section corners, all the 1/4 corners, the center and even some 1/16<sup>th</sup> corners. So, you head out in the field full of confidence that this is going to be a slam dunk. You first

concentrate on the monuments in the NE1/4. You find the N1/4 and the NE corner monuments easily but when you go to the E1/4 corner you find that the monument there is lost. The location is in the flood plain along a river and since the last monument record was deposited in the 1980's, a farm field has been developed there and the location is in the middle of the plowed field. Those farmers own a lot of land in the section just to the east as well as the E1/2 of the E1/2 of the NE1/4 of this section and the NE1/4 of the NE1/4 of the SE1/4 of this section. You're not worried though, because you have the monument record for, and easily find the E1/16 at a corner of Joe's Subdivision. But now you're starting to sense something a bit amiss. It's that pit in the bottom of your stomach developing. Photo 1A is taken from the 1/16<sup>th</sup> looking west. The shovel is in the hole you dug

Figure 1





to find the monument. There's an ancient fence going East to West and South to North in this area, but the monument doesn't line up with either. The white fences are part of Joe's. There's an irrigation easement that runs N-S along the west line (toward the right in Photo 1A) which accounts for the distance between the found monument and the N-S white fence along Joe's. But still, there's that feeling.

Hopefully, all you have left to do is find the existing center monument and your questions will be answered and you'll be virtually done. You pull the accessory distances, make a paint mark on the dirt road, and that's when that pit in your stomach really begins to develop. Your paint mark is a good 30' south of the E-W fence lines on both sides of the road. Before you get the Ryobi out to excavate you wave the metal detector and get a very strong ring. The pit in your stomach is getting bigger. You were actually hoping you'd get no ring at all and that maybe the monument record had the wrong distances. You excavate and find the center monument set there as part of the survey for Joe's Subdivision in 2005. And you thought this was going to be a slam dunk.

Photo 1B is taken from the area of the 1/16<sup>th</sup> corner looking west toward the center. Something isn't lining up so you decide to collect more evidence. That means hiking to the W1/4 along a double fence line on a balk. Part way down the line you stop, turn around, and snap Photo 2A looking east and Photo 2B looking west. Further down the line you snap Photo 3 before finding the W1/4 monument at the fence corner. After hiking back you drive around and locate the monuments at the NW corner, the S1/4 corner and the SW corner of Joe's subdivision.

You stop at the center once again to take another look around, gather your thoughts and cover up the hole you dug before leaving for the day to consider your next move when Mr. Smith comes over to talk. His first words to you are, "Are you going to move the line again?"



What a curious opening statement. Mr. Smith appears to be in his 70's. Knowing the value of parol evidence, especially from the person Jeff Lucas likes to call "Old Timer", you strike up a conversation. As it turns out, Mr. Smith has lived in his house his entire life. He inherited it from his parents. He built the woven wire fence on the south side of the barbed wire fence decades ago. The Jones' farm included the NW1/4 and the W1/2 of the NE1/4 of the section. The Jones' had built their barbed wire fence along their entire south line. Mr. Smith was quite upset when in 2005 Joe's subdivision was surveyed and the result of this survey, which was across the road from his property, moved his property line 30' south at the east end, cutting an angular swath south of what had never been a disputed line. Since then, the NW1/4 portion of the Jones' Farm was surveyed (a copy of which you have) for the Open Space Program and that survey accepted the new center of section and confirmed that Mr. Smith's line was angling through his property well south of the ancient double fences on the balk.

Well, that was a worthwhile conversation to have. But is it enough evidence to hang your hat on? Back at the office you start digging deeper. The W1/4 monument is the original monument. The E1/4 location is documented on the survey of Joe's Sub, but the location was determined from a prorated position along the section line. The S1/4 corner monument can be traced back to an original location and lies in the centerline of the road. And that brings you to the north line of the section along the state highway. The highway has obviously been widened in recent times. It's a well-traveled commuter route. When you trace the history of the three monuments along the north line you find that each were reset in the 1970's by an oldtime PLS, now retired. And you find a curious statement on the monument record for the N1/4 deposited in 1977. It says, "set at equal distance north of the highway centerline as the NE corner, at intersection with



centerline of road to the south". (The dirt road does not continue north of the highway.)

Luckily, as it turns out, you had just read Tom Sylvester's terrific article in the November 2020 issue of *Side Shots* about communicating with each other. So you decide to call up this oldtime PLS and ask him about the situation. He's very forthcoming and remembers the situation well. During a reconstruction of the highway prior to his survey work there in the 1970's, the 3 monuments were destroyed and not replaced. He was able to find only one accessory for the NE corner location and replace that as best as possible. Using the distance from that monument to the centerline of the highway he then intersected that offset line with the centerline of the dirt road to the south to replace the N1/4 corner monument in what he considered to be the most likely location for this monument that could be ascertained from the evidence available, which wasn't much. He knew that his locations weren't the locations of the original monuments, but section breakdowns would have put the locations 100's of feet elsewhere. And he knew that using the section breakdowns would throw the neighborhood into disarray.

After the NE and N1/4 monuments had been reset in the 1970's, they were then used in more modern times to determine the locations of the E1/4 and Center by normal section breakdown procedures.

So now is where the rubber hits the road. You have determined with certainty that the monuments purporting to be at the N1/4 & NE corner are not in the locations of the original corner monuments. And from those the E1/4 & Center were set by normal section breakdown means (proportion and intersection) so they can't be at the original locations either. So...where is the original center of section most likely located? What is the best available evidence and preponderance of evidence that you use to determine that location? How do you explain that to the judge? How liable is the PLS who set the Center monument in 2005 by intersection for the damages caused to every parcel in the section (including Joe's Subdivision)? And do you want to be that PLS?

Oh...and one more thing...aren't you relieved that you happened to be out in the field that day to notice that pit develop in your stomach? Are you teaching that to your field crews?

Be safe out there.

# PAINT THE BREEZE

d.glorso

The breeze of the day  
Brings to mind happier times  
But they're too distant now

The leaves of the trees  
Crackle a rhythm of solitude  
The angry voice departs us now

Too quiet – suddenly  
No voices for days  
Not even electronic gadgetry  
Can break this silence  
The mind replays words  
In the brain

Alas nothing positive to remember  
A depression deep can kill  
So we rattle the pans in the kitchen

Whistle a short tune  
Stare long at the abandoned paintings  
Drying too many days

Unfinished with tens of others  
Combined they represent failure  
Pick up a pen and write a song

Never to be connected to music  
As the pen bleeds words of forlorn  
A sense of happiness revenues

Then thumbing through a magazine by chance  
We see a surprised published written work  
Now these quiet days are yours

Rebuild the urge  
To pick up a brush  
Or pen

And paint  
And write  
And paint



**WESTERN COLORADO**  
**COMMUNITY COLLEGE**  
*A Division of Colorado Mesa University*

## CHANGE YOUR LIFE WITH COLORADO'S ONLY LAND SURVEYING DEGREE PROGRAM

Sponsored by the PLSC, the Land Surveying and Geomatics programs at Western Colorado Community College are designed for students on a career pathway toward becoming a licensed Professional Land Surveyor.

### WCCC OFFERS TWO PROGRAMS:

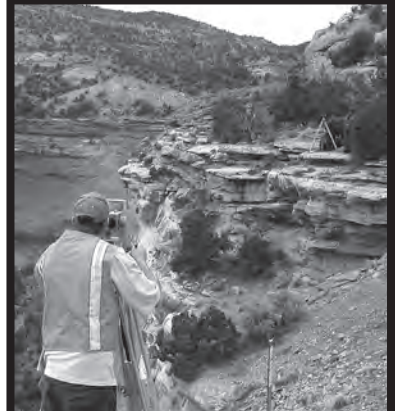
- **Associates in Applied Science Degree in Land Surveying and Geomatics** for those without prior college coursework. This program is designed to be completed within two years.
- **Post-baccalaureate Technical Certificate** for those with a minimum of a Bachelor of Science or Bachelor of Arts degree who need the required surveying curriculum to meet the education requirements to sit for the PLS exams. The Technical Certificate program is designed to be completed in one year.



Learn more at [coloradomesa.edu/wccc/programs/land-surveying-geomatics](https://coloradomesa.edu/wccc/programs/land-surveying-geomatics)



Contact WCCC Students Services at 970.255.2600 for admissions, registration and financial aid information.





# Need to get Utilities located?



Don't let these guys scare you..

## **Call UCS for Utility Locating**

**We will tell you what they are hiding under those boxes...**



**Underground  
Consulting Solutions**

**- QUALITY -  
- DEPENDABLE -  
- EXPERIENCED -**

*We'll get the job done right -  
the first time*



**Underground  
Consulting Solutions**



**Private and Engineering Utility Locates**

# Western Federation of Professional Surveyors (WFPS)

## HIGHLIGHTS FROM THE 13 WESTERN STATES

The Western Federation of Professional Surveyors (WFPS) held a virtual Board of Directors meeting on October 17, 2020 via Zoom video conferencing.

**ALASKA (ASPLS) Steve Buchanan** – No report.

**ARIZONA (APLS) Mike Fondren** – Current membership is 307. The 2020 conference with California and Nevada was held virtually. The conference was well attended and we received positive feedback from the attendees regarding the virtual platform. Senate Bill 1274 passed and became effective in August 2020. This changed the composition of the Board of Technical Registration (BTR). Each profession will have one representative on the BTR however, public members will now comprise the majority of the Board. There are approximately 1280 active land surveyors. Approximately 800 have an in-state address. And we have granted only 7 new licenses in 2020 as of June.

**CALIFORNIA (CLSA) Ray Mathe & Warren Smith** – Current membership is 1483. The 2020 Conference with Arizona and Nevada was held virtually. A white paper has been drafted regarding monument preservation during and after a disaster such as wildfires.

**COLORADO (PLSC) Roger Nelson & Todd Beers** – Current membership is 338. License renewal fees increased to \$94 this year. PLSC is assisting NSPS directors to create legislation related to railroad abandonment of property in order to have the existing infrastructure surveyed prior to destruction. PLSC is currently tracking a bill that is intended to eliminate polyester/mylar plats from being stored by the Clerk and Records of the state.

**HAWAII (HLSA) Cliff Yim** – Current membership is 81. HLSA Board is poised to resume working on a bill to amend the 2017 Land Court Deregistration Legislation when the 2021 legislature session returns to business. The HLSA Board recently updated our digital newsletter to bring a refreshed and modern presentation. The newsletter continues to be released every two months and includes a president message, announcements, and resources for our members.

**IDAHO (ISPLS) - Jeremy Fielding** was recently appointed as the new WFPS Director from Idaho. ISPLS recently launched a new website at [www.idahopls.org](http://www.idahopls.org). Working on standard of practice document which have not been updated in several years.

**MONTANA (MARLS) Dick Smith & Russ Kluesner** – Current membership is 431. MARLS continues to meet virtually during the pandemic. Our MT Subdivision and Surveying Laws Digest was published and distributed to all MARLS PLS members in good standing and are also available for purchase on the

MARLS website. MARLS has requested clarification from BLM on the use of geodetic bearings on smaller area surveys. A final point is being planned to honor James Flansburg, a local land surveyor and artist who contributed wonderful artwork for the MARLS magazine.

**NEVADA (NALS) Trent Keenan & Greg Phillips** – Current membership is 246. NALS membership has increased 40% over the last four years. NALS first virtual conference was held in August and was a great success. NALS continues to support the four-year land surveying degree at Great Basin College (GBC). GBC is in the process of hiring a second professor. Trent Keenan has started a Mentoring Mondays weekly Zoom meeting. NDOT provided a 30-minute introduction to the AX System at the last NALS statewide virtual meeting, NALS worked with NDOT to allow land surveyors to access to right of way mapping and other records. In an effort to keep membership engaged, NALS is hosting monthly statewide virtual meetings. This has been very successful and has allowed participation from members in the more remote areas of the state that otherwise would not be able to participate in NALS meetings.

**NEW MEXICO (NMPS) Allen Grace** – Oral report provided. No significant activities due to the pandemic shut down.

**UTAH (UCLS) Mike Nadeau** – Current membership is 399. The UCLS recently found out that the statute that covers subdivision plats was amended this last year and came as a surprise to the UCLS board. The change affects the surveyor's certification language and the surveyor certifying that he/she has also prepared a record of survey of the property per state code 17-23-17. The Standards and Ethics committee is working to revise the UCLS subdivision guide document to incorporate this change.

**WASHINGTON (LSAW) Ben Petersen & Chris Jepson** – Current membership is 879. LSAW is supporting the monument preservation fund legislation that is being proposed. A virtual survey technicians webinar series is underway and is well attended. The series consists of six weeks with each week providing two hours of education on various topics for the survey technician. LSAW Board of Directors and Chapters continue to meet virtually during the pandemic.

**WYOMING (PLSW) Mark Corbridge** – Current membership is 198. PLSW is currently soliciting comments on draft legislation addressing the 2022 Datum. The Fall Technical Session is planned for November and will feature speaker Chuck Karayan. PLSW is working with the Board of Registration and Geolnquiry to provide outreach to K-12 schools. Work is progressing towards a RTN in Wyoming.

## WESTFED SERVES AS A REGIONAL VOICE

WFPS sent a letter to NALS (Nevada) for support of mandatory continuing education requirement. WFPS serves as a regional voice for the 13 western states. If your state association is dealing with an issue and would like a position letter from WFPS, please contact [admin@wfps.org](mailto:admin@wfps.org)

## WFPS FOUNDATION

The WFPS Disaster Relief and Scholarship fund has been established through the NSPS Education Foundation. Donations are now being accepted. The criteria and application information has been sent to all State Associations and can be found on the WFPS website.

**Donations can be made mailed to WFPS: 526 South E Street, Santa Rosa, CA 95404.**

<https://www.nsps.us.com/donations/donate.asp?id=18191>

## About WFPS

The Western Federation of Professional Surveyors (WFPS) was formed in 1979. The Board of Directors includes two delegates from each of the 13 western states. WFPS serves as a regional voice for Land Surveyors and meets quarterly to discuss practice issues affecting western state surveyors. For more information about WFPS and the state associations, visit [WFPS.org](http://WFPS.org) **WFPS Executive Office**

T. (707) 578-1130 F. (707) 578-4406 E. [admin@wfps.org](mailto:admin@wfps.org)



**303-679-8122**

[Info@SurveySystems.net](mailto:Info@SurveySystems.net)  
[www.SurveySystemsInc.com](http://www.SurveySystemsInc.com)

Survey Systems has the experience and capabilities to team with your Survey or Engineering Firm to provide a hydrographic/bathymetric survey.

Survey Systems (SSI) has assembled a versatile hydrographic platform that is customizable to your clients' needs. SSIs hydrographic surveying capabilities include multi & single beam sonar, stage capacity table, dredge pay quantity, hill shade model or underwater object detection and recovery.

**SURVEY SYSTEMS**

A Professional Surveying Company SDVOSB | SBE



# Board of Directors Meeting Minutes

December 8, 2020 • 4:30PM

## 1. Call to Order: Parker

Name	Position	Chapter	Attending?
Steve Parker	President	Southern	x
Don Hulsey	Vice President	Southern	
Shaun Lee	Secretary/Treasurer	Central	x
Becky Roland	Executive Director	n/a	x
Heather Lassner	Director	Northern/TrigStar	
Eric Carson	Director	Central	
Brian Dennis	Director	Southern	x
Mike Greer	Director	Central	x
Leif Joy	Director	NW ¼	
Eric White	Director	Southern	x
Tom Sylvester	Director	Western	x
Scott Thompson	Director	Western, Legislative Co-Chair	x
Todd Beers	Ex-Officio	Central, NSPS and WFPS Rep.	
Parker Newby	Non-Voting	Southwest	
Roger Nelson	Non-Voting	WFPS Delegate	
Guests:			
John Hunter		Geo-Coordinator	x
Peggy Streicher		GIS in the Rockies	
Ralph Pettit		Legislative Co-Chair	
Todd Johnston		Southwestern Chap-ter	x
Robert Boehm		Central Chapter	x
Tony Fendick		Northern Chapter	
Willie Whelen		NW ¼ Chapter	
Brian Bowker		Western Slope Chapter	x
Brian Shaw		NOAA/NGS	x

## 2. Determination of Quorum (6 voting) confirmed Lee

## 3. Any changes to the Agenda? None: Parker

## 4. Approve October and November Minutes: Parker

**MOTION:** To approve October and November Minutes as presented. (Greer/Thompson)  
Approved unanimously

## 5. Financial Items: Parker/Lee/Roland

- Investment Update from Key Bank (Savings, Earnings, Performance)
  - Checking: \$82,257 Savings: \$62,841
  - Lobbyist is now automatically paid on the 10th of each month
  - Been in touch with Key Investments
    - \$299,850 and earned 6.97% this last year

## 6. BOD Nominations: Parker

- President – Ralph Pettit
- Vice President
- Secretary/Treasurer – Shaun Lee

## d. Directors (4 openings)

- Brian Dennis
- Leif Joy
- Tom Sylvester

## e. Steve Parker – finishing calls

## 7. GIS in the Rockies: Streicher

- PLSC approved new bylaws – waiting for vote

## 8. Colorado Coordinator Activities Hunter

- Still taking feedback on State Plane – need to send a reminder to members (only 5 or 6 so far)
- John Hunter will send an email to Becky to forward to PLSC members and post on the homepage

## 9. NGS Update: Shaw

- GPS on Benchmarks webinar this Thursday at noon
- Current OPUS Beta allows Blue Booking – production Jan/Feb – next is RTK – Brian will ask for feedback when appropriate
- Blueprint documents released by end of February with a March webinar
- Presenting at SW Chapter next week

## 10. WCCC Update/Scholarship Committee: Sylvester

- Finals week!
- Lots of interest in the program
- No graduates this semester but anticipate up to 8 graduates next semester
- No scholarship applications to date – Board is ok with promoting to current WCCC students

## 11. Summit Update Lee/Roland

- Webinars and in-person planned
- In-person will be broadcast
- Promotion will start by end of year
- Could use more volunteers
- Map/Plat contest email sent

## 12. NSPS Update: Beers/Parker

- Congressional Visits in person in April

## 13. NSPS YSN: Combs

- National web call last week

## 14. QBS Update: White

- No meeting recently

## 15. Project Updates

- Colorado Railroad Museum Project: Hulsey/Boehm
  - No update

- b. Adams County: Fendick/Lassner
  - i. No report
- c. Sawyer Garston Collection: Hulse
  - i. No report

## 16. Reports

- a. Executive Director: Roland
  - i. Request from Clemson Univ.
    - 1. No drone class at WCCC
    - 2. Board ok
    - 3. Tom will review for possible partnership
  - ii. Request from AirWorks
    - 1. Concern that it looks like an endorsement
    - 2. Offer to advertise in *Side Shots* and offer Sustaining Membership
  - iii. Request from Dane Courville
    - 1. Talk to Randy
    - 2. Offer to advertise in *Side Shots*
  - iv. BOD Training – consensus is that this should be a live webinar and not recorded. Becky will schedule after the first of the year.
  - v. A reminder that Award nominations are due.
  - vi. A reminder to send Chapter Bylaws for the next Working Group to Becky.
  - vii. March 17-21, 2021 is National Surveyors Week. Please send any activities to Becky to report to NSPS. Becky has also submitted for the Governor's Proclamation.
- b. Lobbyist/Legislative Committee: Thompson/Pettit
  - i. Met with lobbyist and they will continue with articles in *Side Shots*
  - ii. Mostly monitoring this session
  - iii. No consensus on Monument Records timing
    - 1. Ask members for volunteers to work on this
  - iv. Rumor that DORA is willing to eliminate ILCs – looking into this
    - 1. Ask members for volunteers to work on this
  - v. DORA allowing remote testimony
- c. Membership Committee: Carson
  - i. 100 renewals so far – Becky will send reminder and paper renewals this week
- d. Outreach Committee: Dennis
  - i. Waiting for COVID Restrictions to change and allow more in person attendance
- e. Education Committee: Hulse
  - i. No report
- f. Trig Star Committee: Lassner
  - i. No activity
- g. CST Committee: Parker
  - i. Had two people last month – two more in February
- h. *Side Shots* Report: Roland
  - i. Need a volunteer to help with editing/soliciting articles
  - ii. Consider compensation for editor position

- iii. John Hunter volunteered to help
- i. WSPS Delegates' Report: Beers/Nelson
  - i. No report
- j. Colorado County Surveyors: Joy
  - i. No report

## 17. Chapter Reports

- a. Southern: Hulse
  - i. Holiday party was cancelled
- b. Central: Boehm
  - i. Newsletter mailed – John Hunter needs to get one – included sticker with new logo, newsletter, bylaw edits
  - ii. Becky will send list of updates and work with Robert on database mailing address defaults and updates.
  - iii. Bylaw changes need to be approved and then the ballot can be sent.
- c. Northern: Fendick
  - i. No report
- d. NW ¼: Whelen
  - i. No report
- e. Western: Bowker
  - i. Ballot going out this month
  - ii. Discussing location for in person once COVID is over – will still broadcast
  - iii. Encouraged members to provide feedback on LDPs
  - iv. Looking at an August seminar
  - v. Next meeting January 6
- f. Southwestern: Johnston
  - i. Next meeting is December 15 – Brian Shaw presenting virtually
  - ii. Next meeting from there is March 16 – hopefully in person

## 18. Next Meeting Date and Location

- a. Next BOD Meeting – January 12 at 4:30PM
- b. BOD business work group – Bylaws – January

## 19. Adjourn (Thompson/Lee)

# PLSC Treasurer's Report

		2020 Budget	Actual as of 11/30/20
<b>Income</b>			
Scholarship		55,100.00	0.00
Silent Auction		1,075.00	1,075.00
Summit Income		136,775.00	136,775.00
Publication (books)		150.00	0.00
Refresher Course Income		14,675.00	14,675.00
Refresher DVD		900.00	1,625.00
GIS in the Rockies		0.00	0.00
Membership Dues			
NSPS Dues		7,040.00	8,800.00
Membership Dues			
Voting		22,500.00	21,450.00
Associate		7,575.00	9,000.00
Sustaining		3,680.00	3,450.00
Student		90.00	120.00
Retired		180.00	240.00
Membership Dues Subtotal		34,025.00	34,260.00
Total Membership Dues		41,065.00	43,060.00
Miscellaneous		50.00	0.00
Side Shots Ads		4,000.00	1,790.00
<b>Total Income</b>		<b>253,790.00</b>	<b>207,800.00</b>
<b>Expense</b>			
BOD/Chapter Summit Meetings		1,800.00	2,036.42
Side Shots		13,000.00	10,877.32
Awards		1,600.00	1,646.40
Scholarship		<b>55,100.00</b>	<b>4,500.00</b>
TwIST		0.00	0.00
Endowment		50,000.00	0.00
Other		500.00	0.00
PLSC		1,500.00	4,500.00
CFedS		1,500.00	0.00
Chapter/Matching		1,500.00	0.00
Trigstar		100.00	0.00
Refresher Course			
Speaker honorariums/planning		2,400.00	2,200.00
Online Course Development		0.00	0.00
Copies/Printing		0.00	0.00
DVD Sales		250.00	206.26
Supplies, Bus		250.00	895.19
Storage		2,100.00	2,311.00
Special Projects			
???		0.00	0.00
Merchandise		500.00	0.00

Publication (books)	0.00	0.00
Outreach		
High School/Middle School	750.00	0.00
Scouting	0.00	326.29
Legislative	0.00	0.00
Trigstar	100.00	0.00
6PM Plaque Renovation		
Tax prep	750.00	0.00
Web Site	4,000.00	3,167.71
Online Meeting accounts	600.00	
Web Site - Don Lambert	1,000.00	0.00
Lobbyist	15,000.00	13,750.00
Travel, Bus		0.00
BOD Travel	500.00	0.00
WFPS Travel	1,500.00	0.00
NSPS State Directors	0.00	0.00
NSPS Travel	4,000.00	0.00
Credit card/Bank Expense	4,768.56	5,970.00
Insurance	600.00	610.00
Miscellaneous, Bus	150.00	95.00
Phoenix AMC	21,000.00	15,986.25
Postage	250.00	139.91
Membership Packets		
Books	3,000.00	0.00
Decals	250.00	0.00
Postage	500.00	0.00
Dues		
NSPS Dues	7,040.00	8,800.00
Chapter Disbursements	6,180.00	0.00
RMSS Chapter Distribution		
NCPLSC	6,334.00	6,334.00
SCPLSC	6,900.00	6,900.00
CCPS	8,900.00	8,900.00
RMSS Meeting Expense		
Promotion	540.00	540.39
Supplies	400.00	397.56
Copies/Printing	0.00	0.00
Attendee Food/Beverage	54,500.00	54,481.60
Speaker Travel/Expense	8,500.00	8,545.63
PLSC Meeting Expense - Other	18,500.00	18,489.31
Total PLSC Meeting Expense	82,440.00	82,454.49
<b>Total Expense</b>	<b>253,512.56</b>	<b>178,106.24</b>
<b>Net Income</b>	<b>277.44</b>	<b>29,693.76</b>



# Aibot X6

## Flexible surveying & geo-mapping

- Safely go where conventional equipment can't reach
- Point cloud generation, volumetrics, GM creation
- Creation of location & inventory plans, topographic images, planning fundamentals, and aerial photos



Call 1-800-545-0932  
for your demo

**HOLMANS | USA**

PRECISION PERFORMANCE SINCE 1955

6201 Jefferson St. NE, Albuquerque, NM 87109 | [www.HOLMANS.com](http://www.HOLMANS.com)

## Complete Photogrammetric Services

# MAP WORKS

**Contact: Ralph Vomaske, Certified Photogrammetist, ASPRS**

**7625 W. 5th Ave. #110D • Lakewood, CO 80226**

**Phone: 303-667-3540**

**E-mail: [gmapworks@gmail.com](mailto:gmapworks@gmail.com)**

# CHAPTER NEWS

## CCPS

I hope you all are well and had a nice holiday break. You should have received a newsletter in the mail in early December along with copies of the proposed bylaw amendments and a new chapter logo bumper sticker. If you did not receive the newsletter at your house, then it was sent to your workplace. As a reminder, we use your contact information in the PLSC database to reach out to you so please make sure we have your current mailing and email addresses. Since many people are now remote working, we recommend that you select your home address as your primary address. On a similar note we recommend using your personal email address since work email addresses tend to change more frequently. You can check your information by logging into the PLSC website. Once you're logged in your contact info will display on the upper left of the page and you can change it by selecting Change Contact/Profile Info. There isn't much to report in the way of chapter news since there wasn't much activity in the last quarter of 2021.

We're working on setting up speakers for our membership meetings for 2021. If we can find enough speakers I would also like to offer some training sessions this year in addition to the meeting presentations. If you have suggestions for speakers or topics, please send them to [colocentralsurveyors@gmail.com](mailto:colocentralsurveyors@gmail.com). For the time being we're planning on holding virtual meetings but we're hoping we can resume in person meetings and socials later in the year. Until then I look forward to seeing you all at the Rocky Mountain Surveyor Summit.

Regards,  
Robert Boehm, PLS  
President, CCPS

## NC – PLSC

In November we held our last virtual meeting of the year with Kirsten Muncy from IRWA as our guest speaker. Kirsten spoke about the expectations of surveyors from a ROW perspective, and how ROW agents use surveyors.

We were not able to congregate for a Christmas Party this year due to COVID restrictions and are hoping for a healthy new year.

It comes with a heavy heart to hear about the passing of a tremendous representative of our great profession as we bring in the new year. JB Guyton fought a tough battle with cancer while never giving up on his love for

surveying. He was a mentor to many surveyors over the years and had dedicated his life to the surveying community in Colorado and beyond. JB Guyton will always be remembered and missed.

Tony Fendick,  
President, NC-PLSC

## NW 1/4 PLSC

Although this chapter news started out on a "normal" foot, it turned into anything but as the events of last week unfolded. 2020 was a year unlike anyone less than 102 has ever seen- and even those that are 102 wouldn't remember the pandemic of 1918-19! In the NW1/4 of Colorado, we found the year was divided into three parts- before the pandemic, the first month or two of the pandemic and then from May on to December. Once the real estate market was opened up again, we found ourselves in the midst of a record real estate surge in Grand, Routt and Moffat Counties.

Surveyors found themselves with calls from clients seven days a week as an exodus from lock downed areas migrated into NW Colorado. Builders also found themselves with demand far exceeding supply or capability in many cases. 2021 and 2022 will tell us if these changes are permanent- and the key will be internet access and speed of internet service.

And then the events of January 6th unfolded as a horrified nation watched a political rally turn into an unprecedented assault on our Nation's capital. We as a nation have unquestionably reached a tipping point where we need to set aside our differences and work on what we have in common or risk losing this nation we all love.

Respectfully submitted,  
Brian T. Kelly  
Vice President, NW1/4

## SC-PLSC

This has been an interesting year for Chapter meetings since they have been few and far between.

The local Surveyors in our chapter still manage to stay in contact and are staying very busy with their work load.

We are hoping this year will get better so we can all gather together again around the meeting table and enjoy a nice meal along with the many guest speakers planned this year.

# CHAPTER NEWS

Worst case scenario we will hop on board with virtual meetings like some of the other chapters are broadcasting.

Due to the COVID restrictions dial in El Paso County changing to the "Red" zone in December we had to cancel our annual Christmas party at the Miramont Castle, in Manitou Springs.

As of January 4th, the dial has changed for the better to the "Orange" zone, which equates to Indoor meetings with 25% capacity.

The commercial construction & housing industry is still very strong here in Colorado Springs!

Everyone stay safe and healthy!

Don R. Hulse, PLS  
President, SC-PLSC

## SWC – PLSC

Happy New Year!!

The SWC hosted a presentation from Brian Shaw, National Geodetic Survey (NGS) Rocky Mountain Regional Advisor (CO, WT, WY) on December 15, 2020. Because of COVID restrictions this presentation was via video conference/call-in only.

Mr. Shaw gave a great presentation covering the following topics:

- NGS Resources (training, webinars and services)
- History of NOAA and NGS (all topics were great, but this was my favorite part!)
- NGS Purpose and Mission
- Gravity for the Redefinition of the American Vertical Datum (GRAV-D)
- Datums and Reference Frames
- Modernization of the National Spatial Reference System
- GPS on Bench Marks (volunteers needed to collect/submit data through OPUS share!)
- Colorado State Plane Coordinate System (2022)

- US Highway 160 Geoid Slope Validation Survey 2017
- NGS Mark Recovery Webpage
- Beta Leveling Projects Page
- OPUS Projects for RTK

Many thanks to Mr. Shaw for taking the time to draft and present this material to our Chapter! Mr. Shaw's presentation was recorded and is available by request. Please contact me if you are interested.

Our next meeting will be held on March 16, 2021 at 5:30pm at the Holiday Inn & Suites Durango Central. The meeting will begin at 5:30pm and it will be in-person with video conference/call in options. We do not have a speaker scheduled for this meeting and will likely focus on Chapter business continued from our September 2020 meeting. We would like to elect a new Chapter Treasurer. If you are interested, please contact me prior to the March meeting.

Everyone stay safe and healthy!

Todd C. Johnston, PLS  
President - SW Chapter PLSC

## WCLS

WCLS is looking forward to 2021. I am sure all of you are glad to have 2020 behind us. We plan to continue having web meetings throughout the year. Our Seminar is being planned out for the fall of this year. It is currently being set up as an in-person seminar. The back up plan will be a webinar if needed. WCLS went over the Colorado Low Distortion Projections, and addressing ways to increase outreach to our members. As always please stay safe.

Brian K. Bowker, P.L.S.  
President, Western Colorado Land Surveyors



# S U S T A I N I N G M E M B E R S

## **ASSURANCE RISK MANAGERS, INC.**

Lisa Isom  
10651 E. Bethany Drive, Suite 300  
Aurora, CO 80014  
303-454-9562  
lisom@arm-i.com

## **ALTURA LAND CONSULTANTS, LLC**

Jesus Lugo  
6950 S Tucson Way Unic C  
Centennial, CO 80112  
720-488-1303  
marissa@alturaland.com

## **CARDNO, INC.**

Andrew Sylvest  
Branch Manager  
14142 Denver West Parkway  
Suite 280  
Lakewood, CO 80401  
720-556-5245  
andrew.sylvest@cardno.com

## **CARLSON SOFTWARE**

Jim Reinbold  
Regional Sales Director  
1412 W Powder Ct.  
Eagle, ID 83616  
303-482-1836  
jreinbold@carlsonsw.com

## **DIVERSIFIED UNDERGROUND INC.**

Richard Chuapoco  
2851 S. County Rd. 137  
Bennett, CO 80102  
720-490-1321  
richard@diversifiedunderground.com

## **ECAD**

Kelly Marrill  
12130 N. Pennsylvania St.  
Thornton, CO 80241  
303-427-2231  
Kmarrill@cad-1.com

## **FARNSWORTH GROUP**

Christopher Brooks  
5613 DTC Pkwy., Ste. 1100  
Greenwood Village, CO 80111  
303-692-8838  
cbrooks@f-w.com

## **FLATIIONS SURVEYING, INC.**

Ed Bristow  
3825 Iris Ave., Ste. 395  
Boulder, CO 80301  
303-443-7001  
ebristow@flatironsinc.com

## **FRONTIER PRECISION INC.**

Mel Philbrook  
5480 W 60th Ave., Unit A  
Arvada, CO 80003  
720-214-3500  
mel@frontierprecision.com

## **GEOSHACK**

Thad King  
7000 E 47th Ave., Ste. 900  
Denver, CO 80216  
303-853-0311  
tking@geoshack.com

## **HIXON MFG. & SUPPLY CO.**

Ken Perry  
1001 Smithfield Dr.  
Fort Collins, CO 80524  
303-694-0012  
ken@hixonmfg.com

## **JACOBS**

Robert Boehm,  
9191 S Jamaica St  
Englewood CO 80112  
720.286.2914  
robert.boehm@jacobs.com

## **KINETIC ENERGY SERVICES, LLC**

Dustin Muir  
PO Box 530  
Milliken, CO 80543  
720-442-1162  
dustin.muir@kineticindustry.com

## **MERRICK & COMPANY**

Todd Beers  
Survey Project Manager  
5970 Greenwood Plaza Blvd.  
Greenwood Village, CO 80111  
303-751-0741  
todd.beers@merrick.com

## **NV5, INC.**

Eric White  
5445 Mark Dabbling Blvd., Ste. 100  
Colorado Springs, CO 80918  
719-268-8535

## **R&R ENGINEERS-SURVEYORS, INC.**

Andy Maggioro  
1421 S Joplin St.  
Aurora, CO 80017  
720-390-5526  
amaggioro@aol.com

## **SKLD INFORMATION SERVICES**

Kelly Mulé  
Sales Representative  
9540 East Jewell Ave  
Suite A  
Denver, CO 80247  
(303)695-3850  
kmule@skld.com

## **SURVEYING AND MAPPING, LLC (SAM)**

Mark Hall  
555 Zang Street #210  
Lakewood CO 80228  
303-988-5852  
Mark.hall@sam.biz

## **SYNERGY MAPPING, INC.**

Kent Travis  
6551 S Revere Pkwy., Ste. 235  
Centennial, CO 80111  
303-478-3866  
tgkent@synergymapping.com

## **TERRAMETRA RESOURCES**

Lynn Patten  
2919 Bryn Mawr Place  
Longmont, CO 80503  
303-709-2903  
lynn.r.patten@gmail.com

## **TOM RICHARDSON LLC**

41255 Dublin Dr.  
Parker, CO 80138  
303-699-3524  
Gwen@TomRichardsonLLC.com

## **UNDERGROUND CONSULTING SOLUTIONS**

Kelly Goff  
2701 W. Oxford Ave., Suite 6  
Englewood, CO 80110  
303-904-7422  
ucs@totalspeed.net

## **VECTORS, INC**

Chuck Hutchins  
Sales  
10670 E Bethany Dr.  
Bldg. 4  
Aurora, CO 80014  
303-283-0343  
chuckh@vectorsinc.com

## **WESTWOOD PROFESSIONAL SVCS.**

Ty Trammell  
4514 County Road 5  
Erie, CO 80516  
806-678-5540  
ty44trammell@yahoo.com

These firms support our organization.  
Please show them your appreciation with your  
patronage. To become a Sustaining Member,  
please contact Becky Roland at  
broland@plsc.net, or 303-551-3266.

# SURV-KAP<sup>®</sup>

## No Boundaries On Customer Service

We manufacture a full line of brass survey markers for all of your surveying needs.



**MONUMENTS, MARKERS, CAPS & ACCESSORIES**

**ORDER NOW: 800-445-5320 • SURV-KAP.COM**

Custom Survey Markers & Monuments • Signs & Witness Posts • Flagging & Targets • Nails & Washers

# Survey Marker

Custom Survey Markers & Monuments • Signs & Witness Posts • Flagging & Targets • Nails & Washers



**Berntsen<sup>®</sup>**  
Marking the Infrastructure of the World<sup>™</sup>

877-686-8561 | [www.berntsen.com/colorado](http://www.berntsen.com/colorado)



Frontier Precision helps you re-imagine what's possible. Welcome to the Trimble R12i GNSS System. Its Trimble ProPoint™ RTK positioning engine and Trimble TIP™ tilt compensation technology allows you to measure or stake out points faster and in more places, without ever having to level the survey pole. Even on sites that were once inaccessible — like the edge of an open excavation or around building corners. Make the move to being even more productive. To get started, visit: [www.frontierprecision.com/trimble-r12i](http://www.frontierprecision.com/trimble-r12i).



**THE WORKSITE IS RARELY ON YOUR SIDE.  
THE FIELD IS NOW TILTED IN YOUR FAVOR.**

**Want more information? Contact:**

Jason Dysthe, Geospatial Sales Representative  
[jasond@frontierprecision.com](mailto:jasond@frontierprecision.com)  
720.214.3500 or 800.652.1522 [Toll Free]



**Frontier Precision**  
5480 West 60th Avenue  
Unit A  
Arvada, CO 80003

